

# RM1-hPSMA

## Strain Information

Cat. NO.	NM-QL01-TM1
Cell Line	RM1-Tg(hPSMA)Smoc
Strain State	Validation of tumorigenic capacity completed
Model	PSMA gene humanized RM1 cell line
Description	*Literature published using this strain should indicate: RM1-hPSMA cell line (Cat. NO. NM-QL01-TM1) was purchased from Shanghai Model Organisms Center, Inc..

## Validation Data

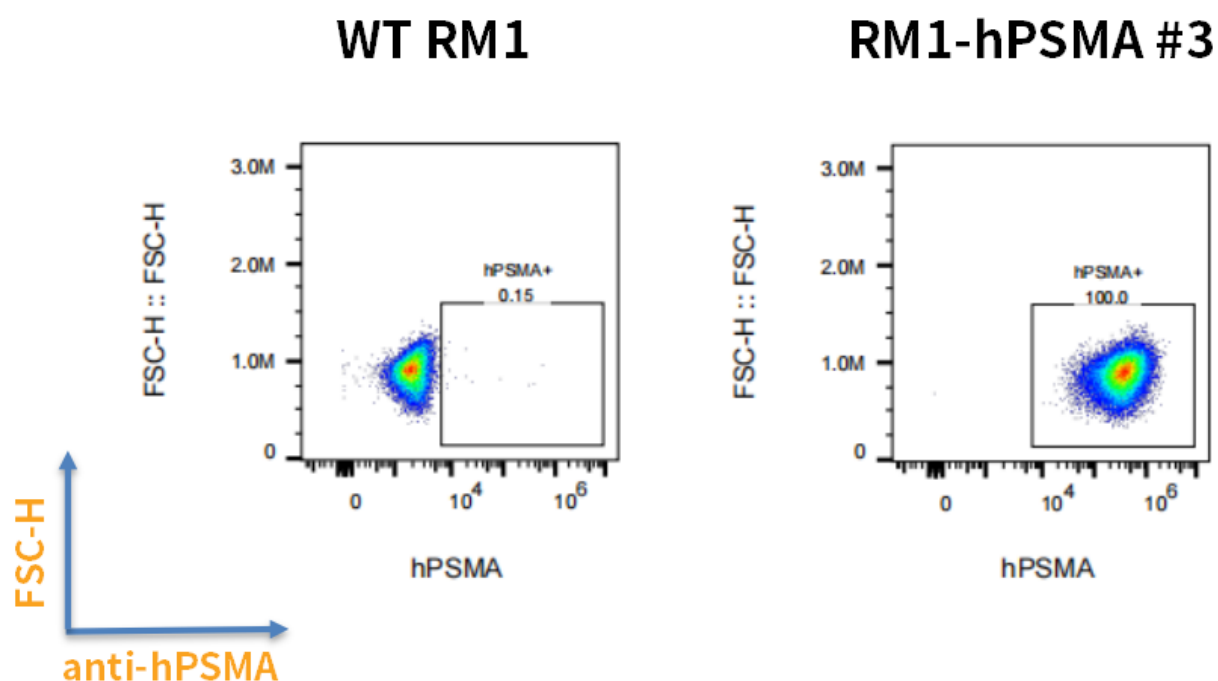


Fig1. Detection of hPSMA expression in RM1-hPSMA cells *in vitro* .

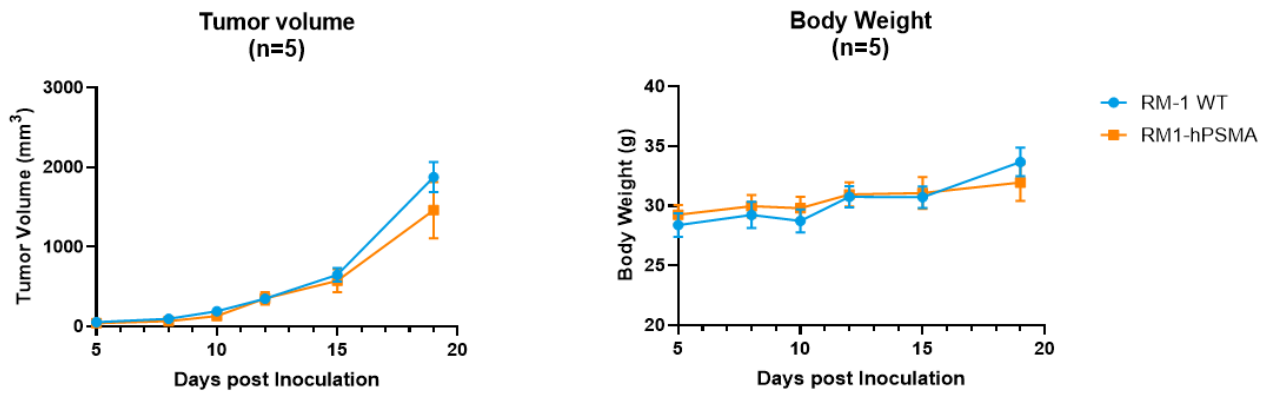


Fig2. *In vivo* tumor growth curves of RM1-hPSMA cells in hPSMA mice.

Het male hPSMA mice were inoculated with RM1-hPSMA subcutaneously at  $2 \times 10^6$  cells/mouse inoculum for tumor development.

**WT RM1  
(Control tumor)**

**RM1-hPSMA #3  
(Tumor-644)**

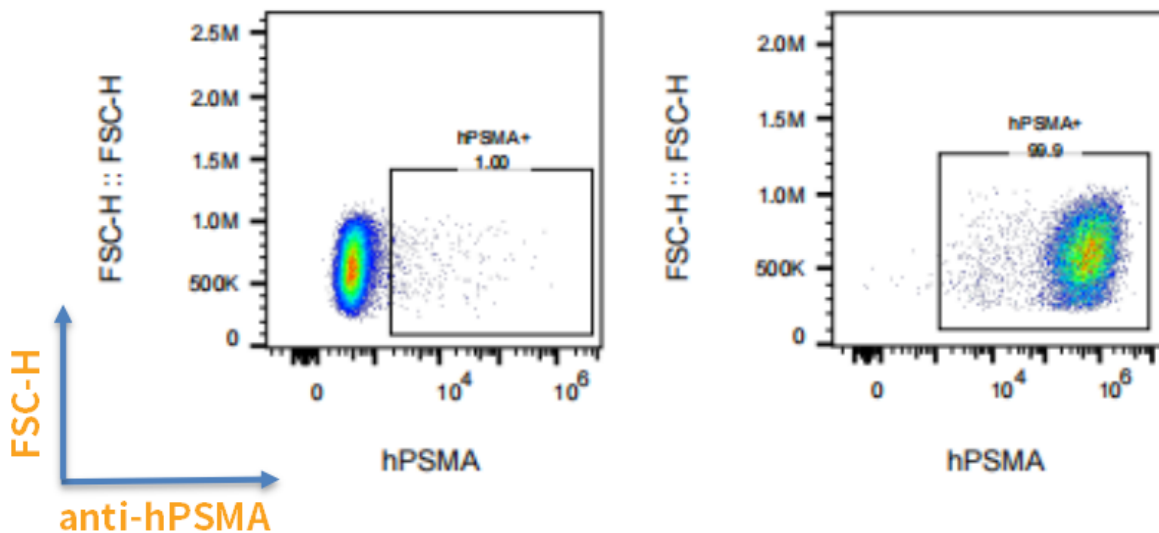


Fig3. Detection of hPSMA expression on tumor cells in subcutaneous xenograft model of RM1-hPSMA cells (The tumors were collected at day 15 post tumor cell inoculation).