

Cdh16-CreERT2

Nomenclature	C57BL/6Smoc- <i>Cdh16</i> ^{em(Kozak-CreERT2)1Smoc}
Cat. NO.	NM-KI-225084
Strain State	Repository Live

Gene Summary

Gene Symbol Cdh16	Synonyms	-
	NCBI ID	12556
	MGI ID	106671
	Ensembl ID	ENSMUSG00000031881
	Human Ortholog	CDH16

Model Description

Kozak-CreERT2 expression cassette was knocked into the Cdh16 gene .

*Literature published using this strain should indicate: Cdh16-CreERT2 mice (Cat. NO. NM-KI-225084) were purchased from Shanghai Model Organisms Center, Inc..

Validation Data

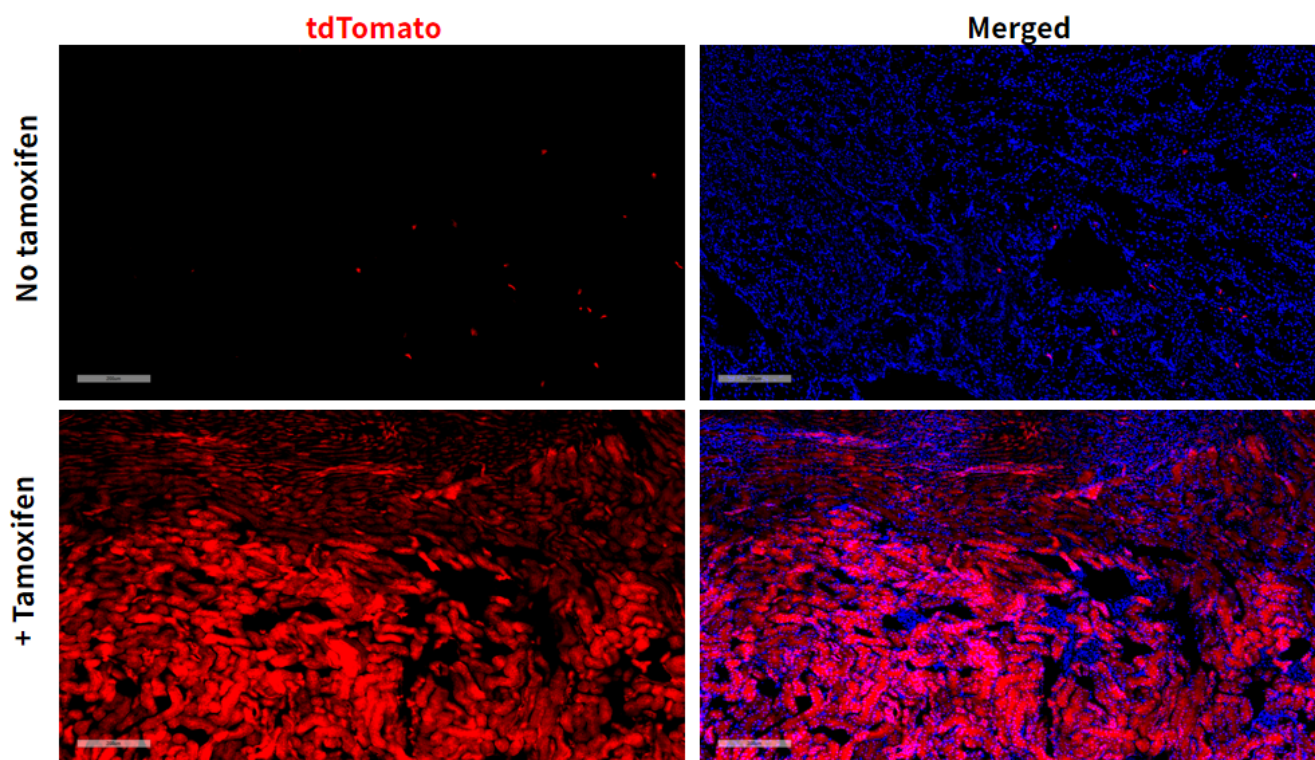


Fig 1. Cre-mediated recombination in kidney of $Cdh16^{CreERT2/+}$; $Rosa26^{tdTomato/+}$ mice.

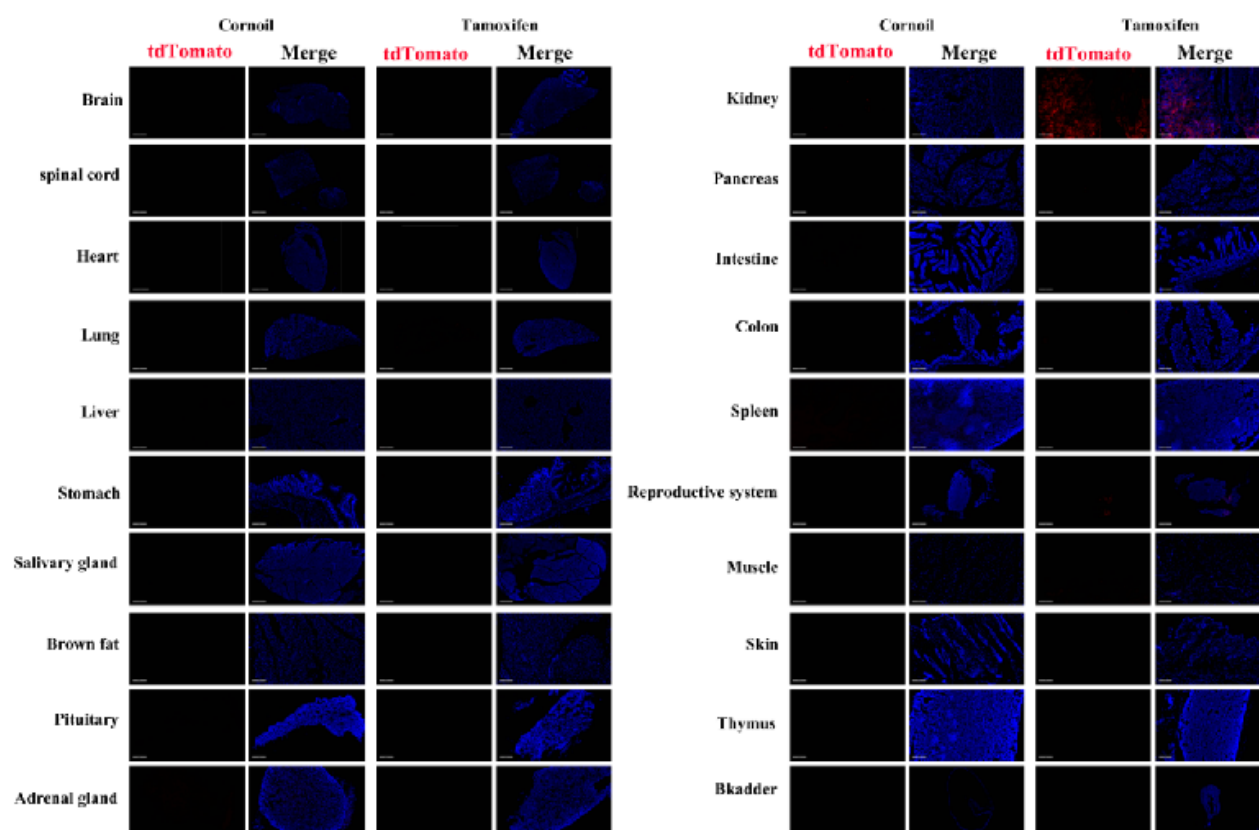


Fig 2. Detection of tdTomato (red) in various tissues of $Cdh16^{CreERT2/+}$; $Rosa26^{tdTomato/+}$ mice. Expression tissues include: kidney, lung, epididymis. A few cells expressed in pancreas. Tissues

that unexpressed include brain, spinal cord, heart, liver, stomach, salivary glands, brown fat, pituitary gland, adrenal gland, small intestine, colon, spleen, muscle, skin, thymus, bladder. (10-week old, male) (For more detailed information please contact our technical advisor.)
