

hTL1A(BALB/c)

Nomenclature	BALB/cAnSmoc- <i>Tnfsf15</i> ^{em1(hTNFSF15)Smoc}
Cat. NO.	NM-HU-220602
Strain State	Repository Live

Gene Summary

Gene Symbol Tnfsf15	Synonyms	TL1; TL1a; Vegi; Tnlg1b
	NCBI ID	326623
	MGI ID	2180140
	Ensembl ID	ENSMUSG00000050395
	Human Ortholog	TNFSF15

Model Description

The endogenous mouse *Tnfsf15* gene was replaced by human TNFSF15 gene.

*Literature published using this strain should indicate: hTL1A(BALB/c) mice (Cat. NO. NM-HU-220602) were purchased from Shanghai Model Organisms Center, Inc..

Validation Data

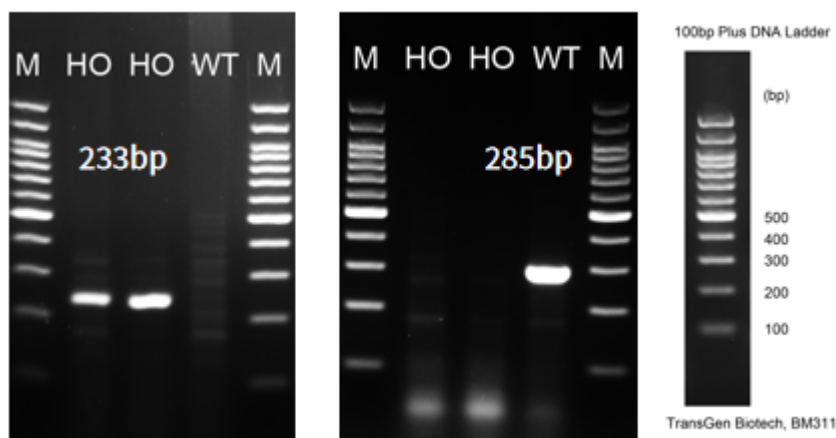


Fig.1 Detection of TL1A expression in bladder by RT-PCR.

Wild type: only one band at 285 bp with primers F1/R1 (mTL1a);

Homozygous: only one band at 233 bp with primers F2/R2 (hTL1A).

Abbr. M, DNA marker; HO, homozygous; WT, wild type.

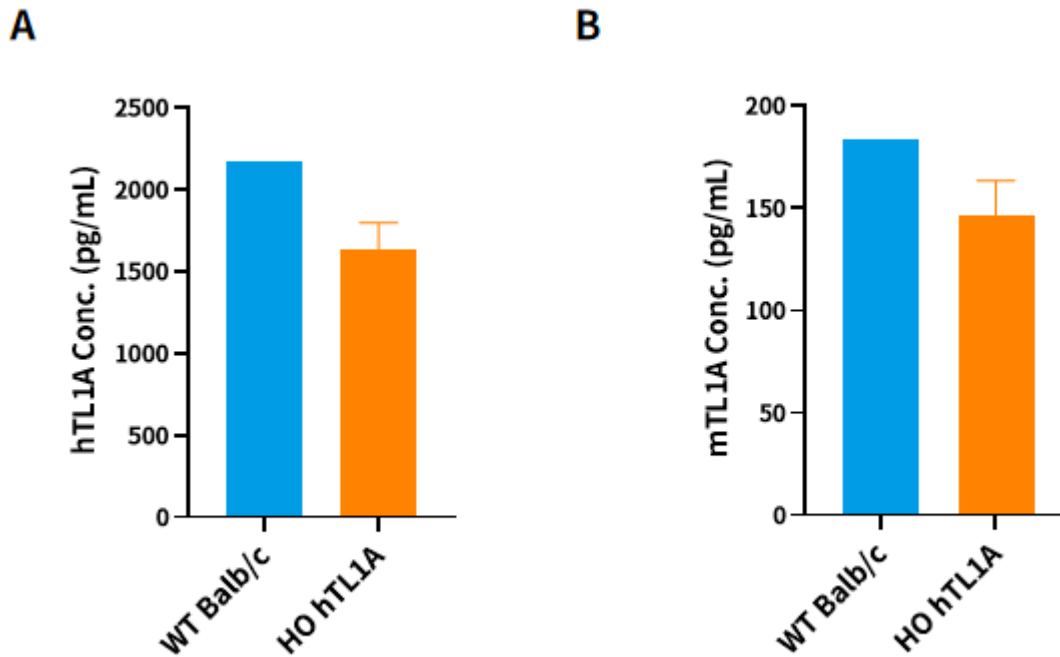


Fig.2 Detection of hTL1A (A) and mTL1A (B) expression in lung homogenate by ELISA (n=3).

Abbr. HO, homozygous; WT, wild type.

Note. hTL1A and BALB/c mice were i.p. injected with LPS for 6h. The anti-human and mouse TL1A kit cross-reacted with mTL1A and humanized TL1A.

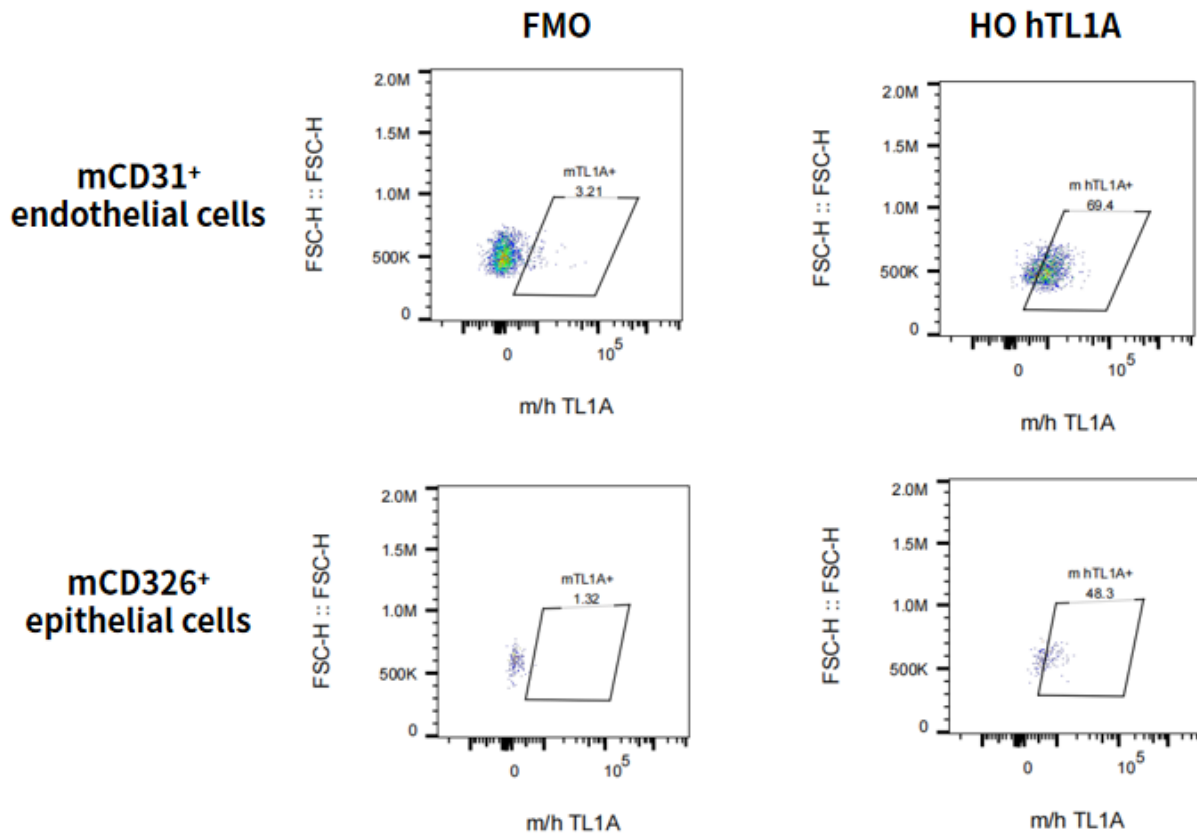


Fig.3 Detection of TL1A expression on endothelial and epithelial cells in lung in hTL1A mice

Note. The hom hTL1A mice were stimulated with LPS in vivo.