

hFCRN/hALB(SD)

Gene Summary

Model Description

The hALB(SD)(NR-HU-200001) was crossed with hFCRN(SD)(NR-HU-200002) to generate hFCRN(SD)/hALB(SD) mice.

*Literature published using this strain should indicate: hFCRN/hALB(SD) rats (Cat. NO. NR-HU-233317) were purchased from Shanghai Model Organisms Center, Inc..

Validation Data

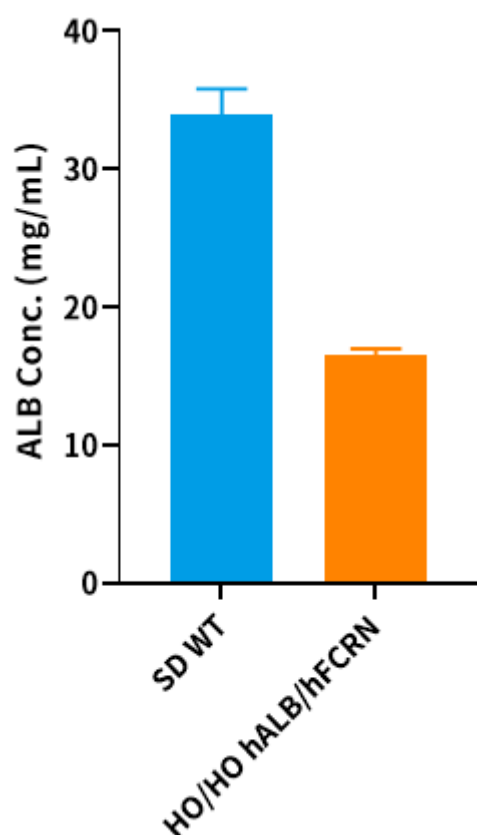


Fig1. Detection of ALB expression in serum by blood biochemical analysis (n=4).

Abbr. HO, homozygous; WT, wild type.

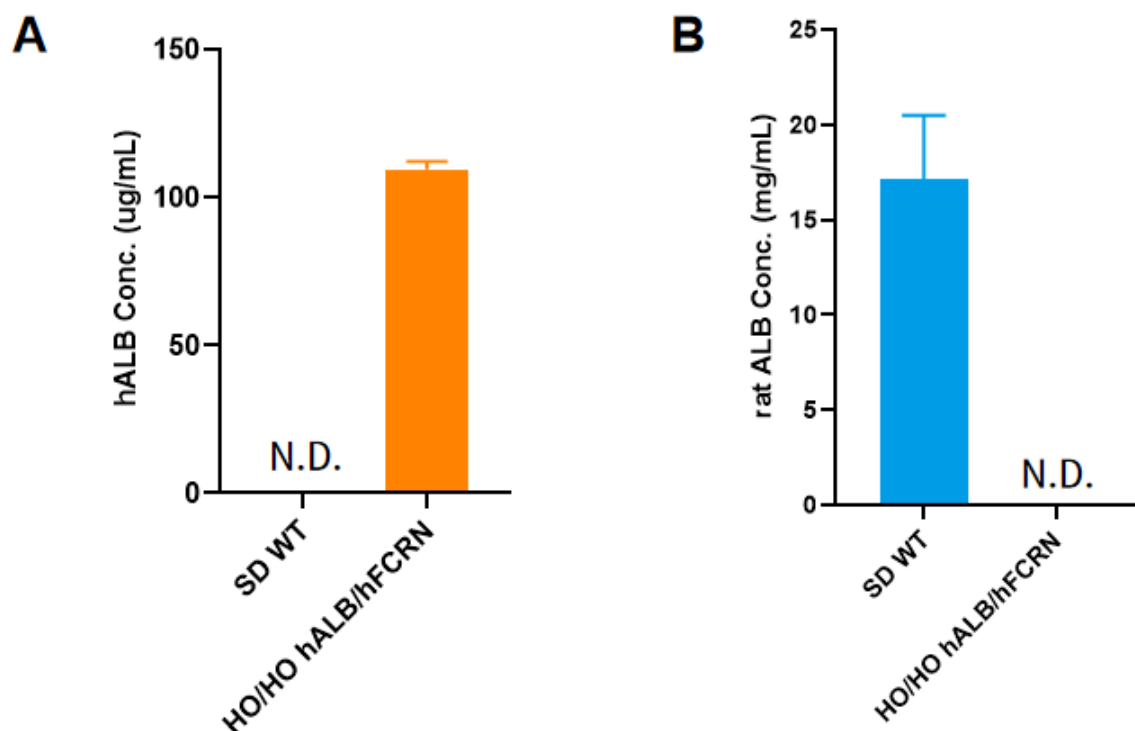


Fig2. Detection of hALB and rat ALB expression in plasma by ELISA (n=3).

Abbr. HO, homozygous; WT, wild type.

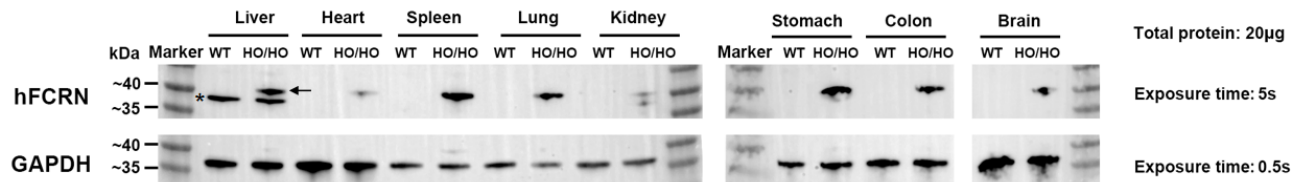


Fig3. Expression characterization of hFCRN in hALB/hFCRN dKI rat by Western blot. (Arrow indicates expected molecular weight and asterisk indicates a nonspecific band)

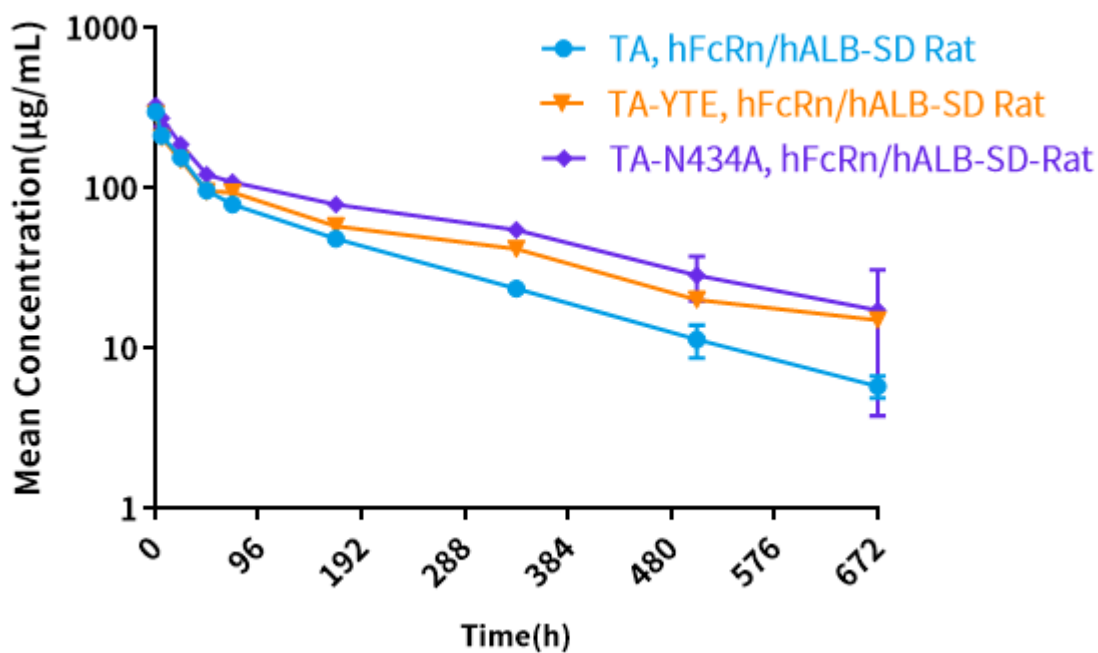


Fig4. Blood concentration curve of test articles in hFcRn/hALB dKI rats.

In hFcRn/hALB dKI rats, the half-life time: TA-N434A > TA-YTE > TA. (In cooperation with the third party)

Keytruda PK Study

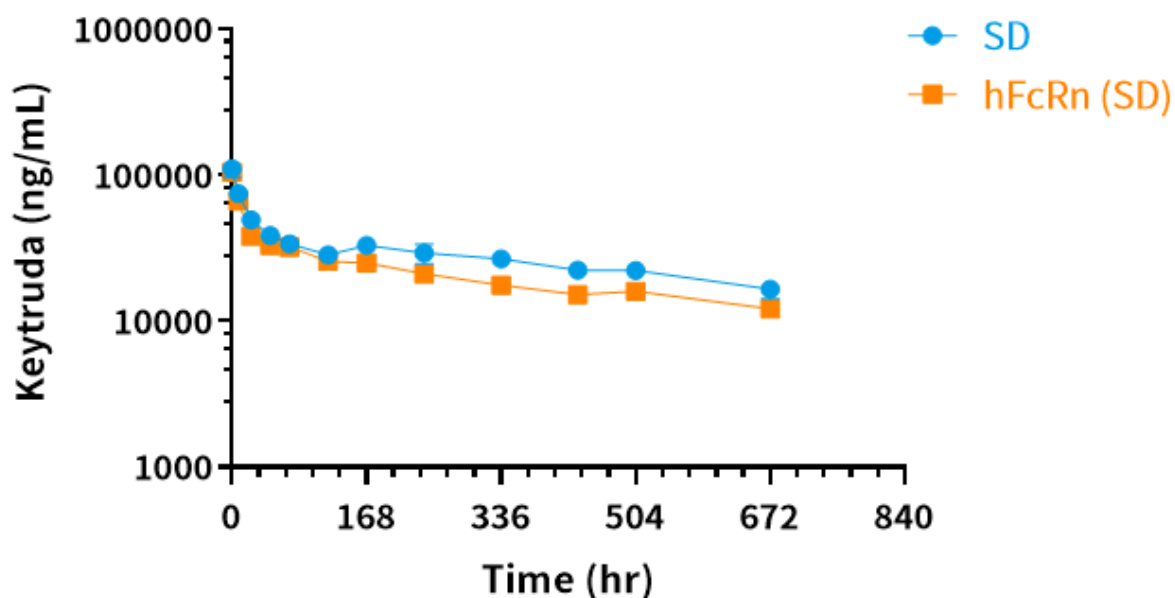


Fig5. PK study of Keytruda in hFCRN rat.

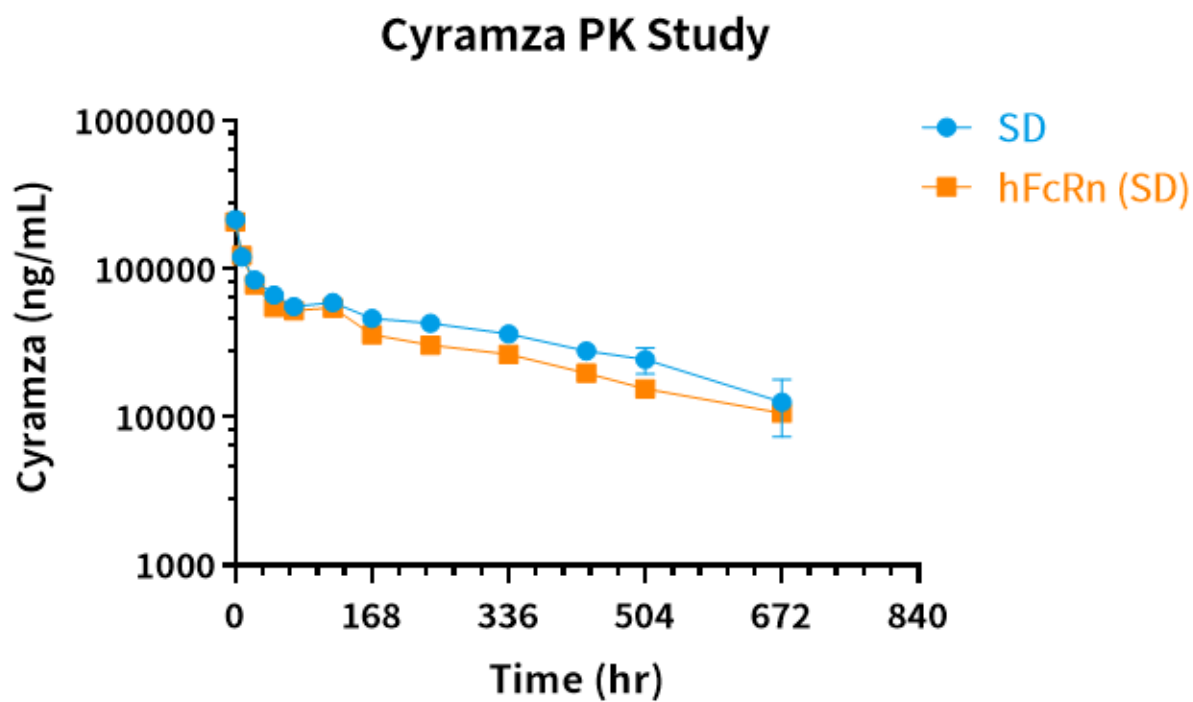


Fig6. PK study of Cyramza in hFCRN rat.