

Kank1-2A-DreERT2

Nomenclature	C57BL/6Smoc- <i>Kank1</i> ^{em1(2A-DreERT2)Smoc}
Cat. NO.	NM-KI-190040
Strain State	Embryo cryopreservation

Gene Summary

Gene Symbol Kank1	Synonyms	Ankrd15; AU015049; AW121052; mKIAA0172; A930031B09Rik; D330024H06Rik
	NCBI ID	107351
	MGI ID	2147707
	Ensembl ID	ENSMUSG00000032702
	Human Ortholog	KANK1

Model Description

A 2A-DreERT2 expression cassette was knocked into the Kank1 gene stop codon site.

Research Application: Dre recombinase tool

*Literature published using this strain should indicate: Kank1-2A-DreERT2 mice (Cat. NO. NM-KI-190040) were purchased from Shanghai Model Organisms Center, Inc..

Validation Data

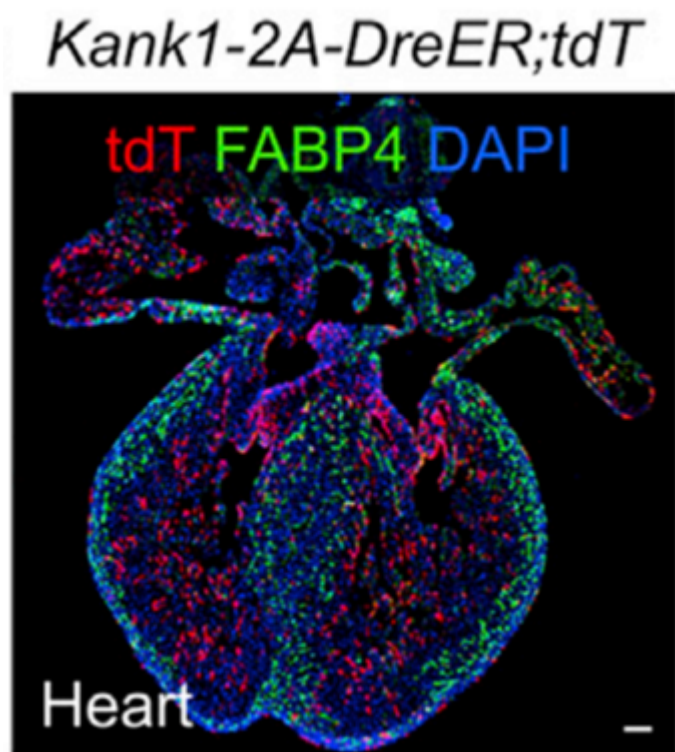


Fig.1 DreERT2-mediated recombination in the heart of $Kank1^{DreERT2/+}$; $R26^{tdTomato/+}$ mouse. TdTomato (red) expression can be detected in the heart after tamoxifen treatment. Fabp4 (green) is the marker gene known to be expressed in the coronary vessel endothelial cells. (Documented in the following reference.)

Publications

[A Suite of New Dre-recombinase Drivers Markedly Expands the Ability to Perform Intersectional Genetic Targeting](#)

References: CELL STEM CELL