

hSIGLEC8(2)

Nomenclature	C57BL/6Smoc- <i>Siglecf</i> ^{em1(hSIGLEC8)Smoc}
Cat. NO.	NM-HU-210033
Strain State	Embryo cryopreservation

Gene Summary

Gene Symbol Siglecf	Synonyms	Siglec5; mSiglec-F
	NCBI ID	233186
	MGI ID	2681107
	Ensembl ID	ENSMUSG00000039013
	Human Ortholog	SIGLECF

Model Description

The endogenous mice *Siglecf* gene was replaced by human SIGLEC8 gene. While hSIGLEC8(Stock No.NM-HU-204983) mice function similarly to hSIGLEC8(2) mice,for more detailed information please contact our technical advisor.

Research Application: inmmeue therapy; drug screening

*Literature published using this strain should indicate: hSIGLEC8(2) mice (Cat. NO. NM-HU-210033) were purchased from Shanghai Model Organisms Center, Inc..

Validation Data

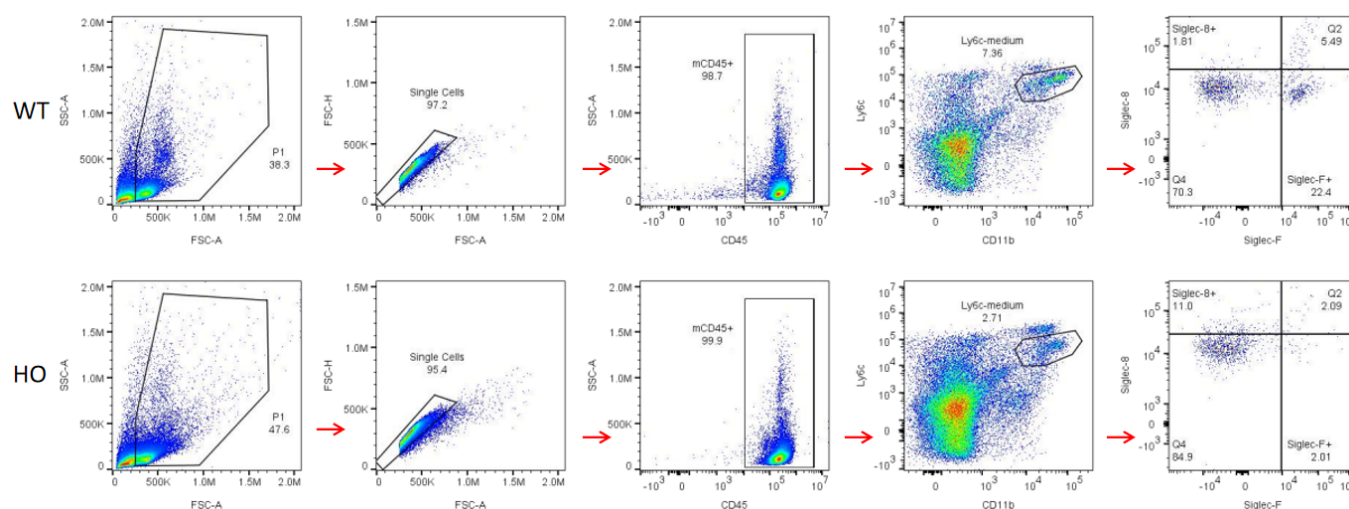


Fig1. Strain specific SIGLEC8 expression analysis in homozygous hSIGLEC8 mice by flow cytometry. Spleen derived eosinophils were collected and analyzed by flow cytometry with species-specific anti-hSIGLEC8 and anti-mSIGLEC-F antibody. hSIGLEC8 was detectable in hSIGLEC8 mice but not in WT mice, mSIGLEC-F was detectable in WT mice but not in hSIGLEC8 mice.

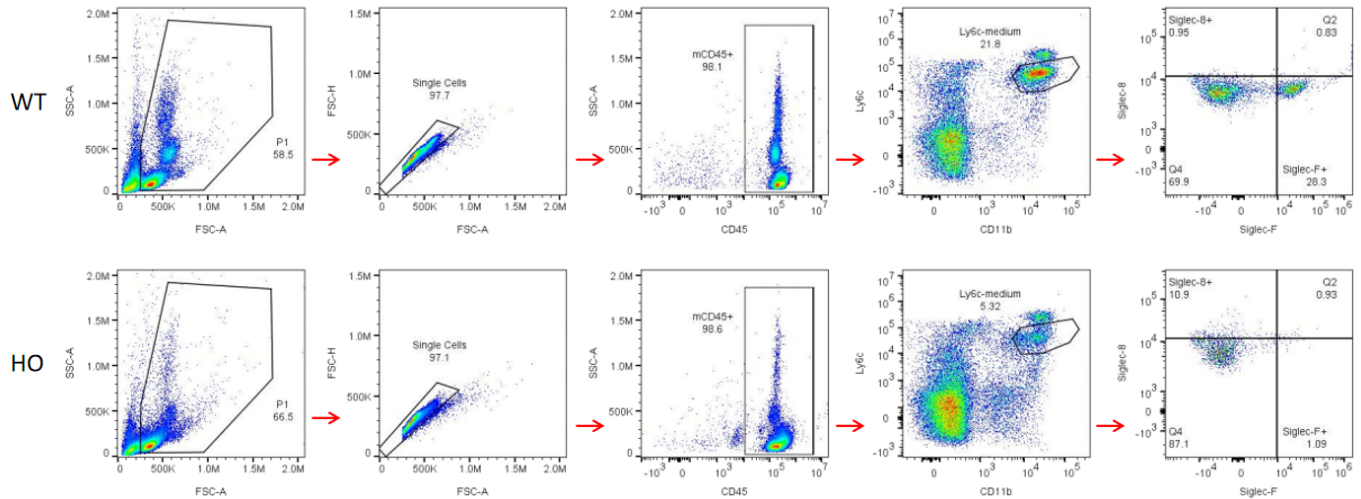


Fig2. Strain specific SIGLEC8 expression analysis in homozygous hSIGLEC8 mice by flow cytometry. Eosinophils of PBMC were collected from WT and homozygous hSIGLEC8 mice, and analyzed by flow cytometry with species-specific anti-hSIGLEC8 and anti-mSIGLEC-F antibody. hSIGLEC8 was detectable in a small proportion of eosinophils in hSIGLEC8 mice, and the mSIGLEC-F was not expressed.