

# Tagln-Cre(SD)

## Gene Summary

### Gene Symbol

Synonyms

Sm22

NCBI ID

[25123](#)

RGD ID

Ensembl ID

[ENSRNOG00000017628](#)

Pubmed

Human Ortholog

TAGLN

## Model Description

Cre expression cassette was knocked into the Tagln gene .

\*Literature published using this strain should indicate: Tagln-Cre(SD) rats (Cat. NO. NR-KI-210134) were purchased from Shanghai Model Organisms Center, Inc..

## Validation Data



Fig 1. Cre-mediated recombination in aorta of TaglnCre/+; Rosa26mTmG/+ rat.

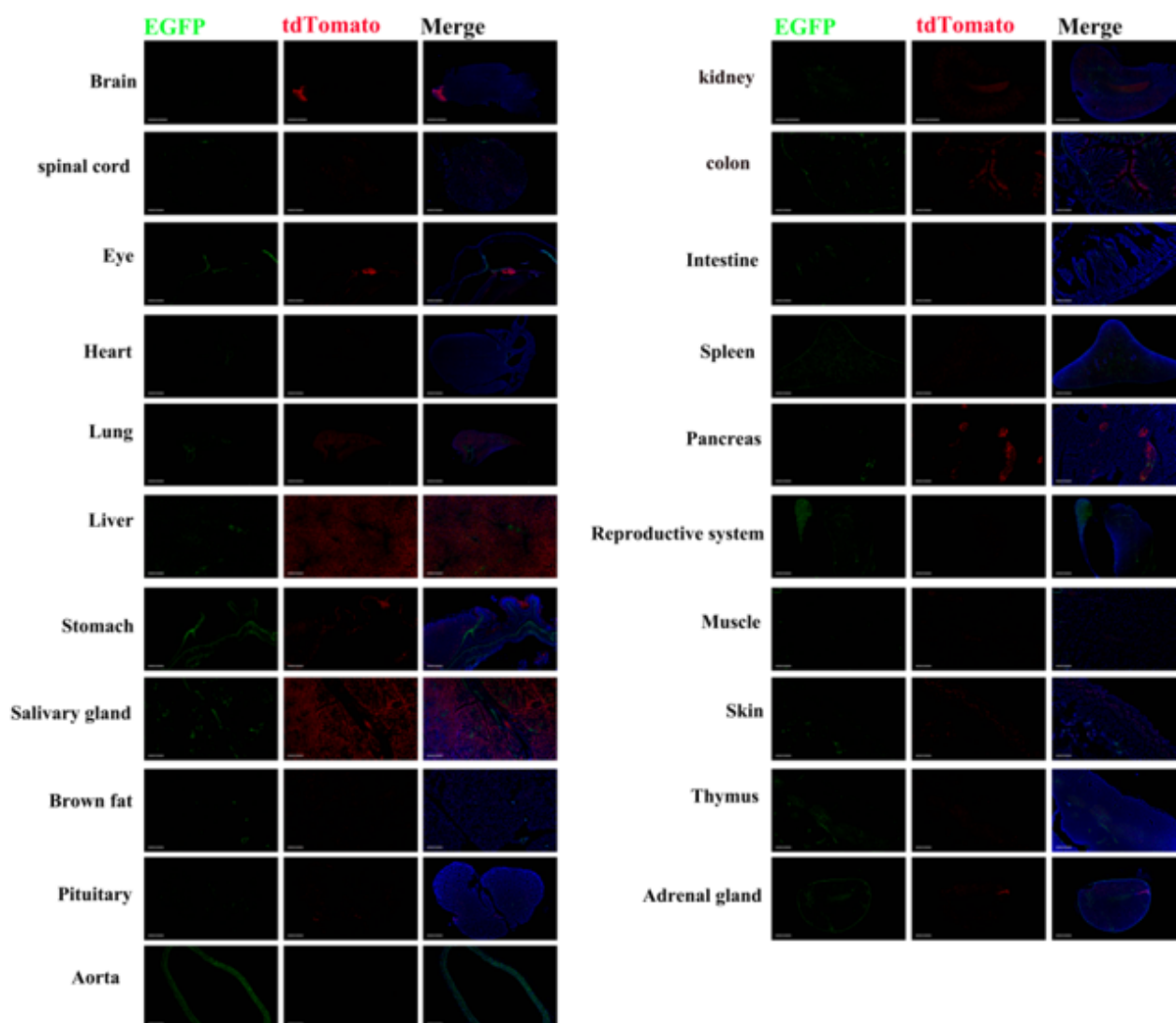


Fig 2. Detection of tdTomato (red) and EGFP (Green) in various tissues of TaglnCre/+; Rosa26mTmG/+ rat. Expression tissues include: aorta, lung, liver, stomach, salivary gland, pituitary gland, kidney, colon, small intestine, spleen, epididymis, testis, thymus, adrenal gland. A few cells expressed in spinal cord, eyeball, heart, brown fat, pancreas, muscle. (28-day old, male) (For more detailed information please contact our technical advisor.)