

# B2m-KO(NMG)

<b>Nomenclature</b>	NOD.Cg- <i>Prkdc</i> <sup>scid</sup> <i>Il2rg</i> <sup>em1Smoc</sup> <i>B2m</i> <sup>em1Smoc</sup>
<b>Cat. NO.</b>	NM-NSG-002
<b>Strain State</b>	Repository Live

## Gene Summary

<b>Gene Symbol</b> B2m	<b>Synonyms</b>	beta2-m beta 2 microglobulin Ly-m11
	<b>NCBI ID</b>	<a href="#">12010</a>
	<b>MGI ID</b>	<a href="#">88127</a>
	<b>Ensembl ID</b>	<a href="#">ENSMUSG00000060802</a>
	<b>Human Ortholog</b>	B2M

## Model Description

This B2m knockout mouse model was obtained by knocking out the exon 2-3 region of mouse B2m gene on the background of NMG mouse.

**Research Application:** immunodeficiency, immune system, transplantation research

\*Literature published using this strain should indicate: B2m-KO(NMG) mice (Cat. NO. NM-NSG-002) were purchased from Shanghai Model Organisms Center, Inc..

## Validation Data

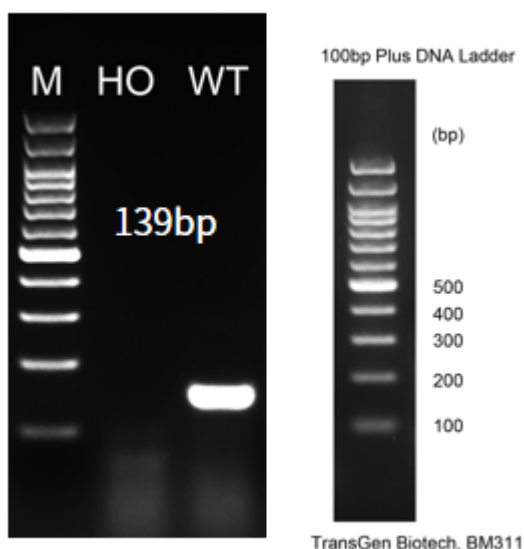


Fig1. Detection of B2m expression in cerebellum by RT-PCR.

Wild type: only one band at 139 bp with primers F1/R1(mB2m);

Abbr. M, DNA marker; HO, homozygous; WT, wild type.

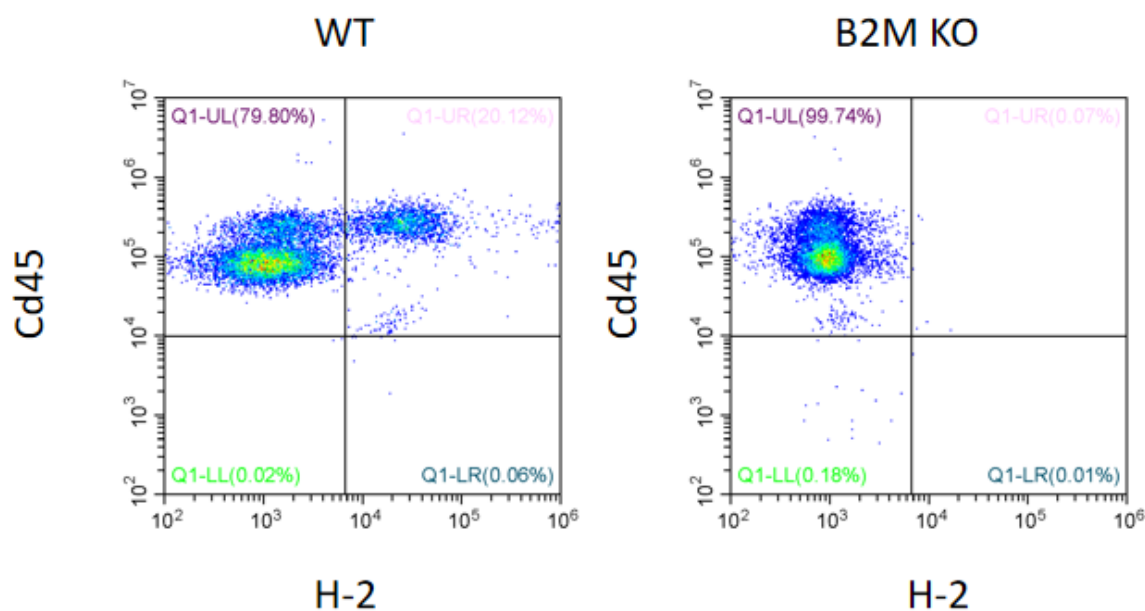


Fig2 . H-2+ cells detected from M-NSG wild-type mice was absent in blood from M-NSG  $\beta$ 2m KO mice.