

Cela1-2A-DreERT2

Nomenclature	C57BL/6Smoc- <i>Cela1</i> ^{em1(2A-DreERT2)Smoc}
Cat. NO.	NM-KI-190094
Strain State	Embryo cryopreservation

Gene Summary

Gene Symbol Cela1	Synonyms	Ela1; Ela-1; PC-TsF; 1810009A17Rik; 1810062B19Rik
	NCBI ID	109901
	MGI ID	95314
	Ensembl ID	ENSMUSG00000023031
	Human Ortholog	CELA1

Model Description

A 2A-DreERT2 expression cassette was knocked into the Cela1 gene stop codon site.

Research Application: Dre recombinase tool, pancreatic acinar cells

*Literature published using this strain should indicate: Cela1-2A-DreERT2 mice (Cat. NO. NM-KI-190094) were purchased from Shanghai Model Organisms Center, Inc..

Validation Data

Cela1-2A-DreER;tdT

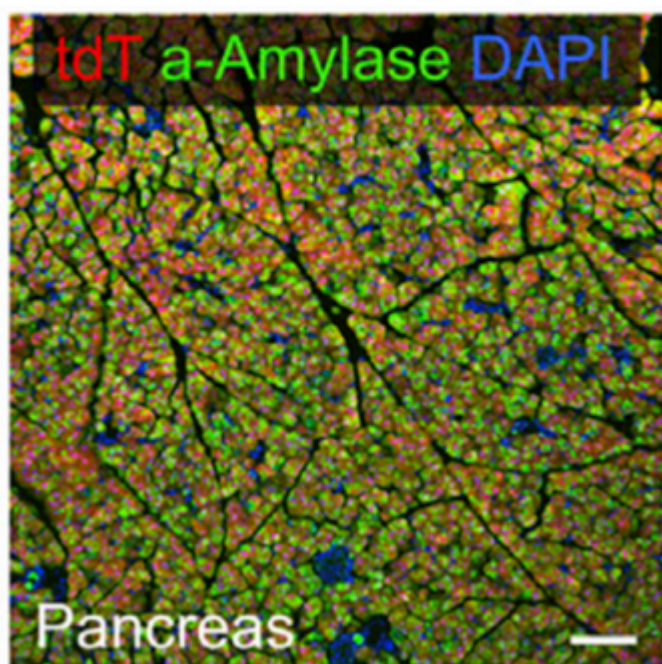


Fig.1 DreERT2-mediated recombination in the pancreas of $Gja1^{DreERT2/+}$; $R26^{tdTomato/+}$ mouse. TdTomato (red) expression can be detected in the pancreas after tamoxifen treatment. α -amylase (green) is a digestive enzyme that is predominantly secreted by the acinar cells of the exocrine pancreas. (Documented in the following reference.)

Publications

[A Suite of New Dre-recombinase Drivers Markedly Expands the Ability to Perform Intersectional Genetic Targeting](#)

References: CELL STEM CELL