

Ucp1-CreERT2

| | |
|---------------------|---|
| Nomenclature | C57BL/6Smoc- <i>Ucp1</i> ^{em1(Kozak-CreERT2-WPRE-polyA)Smoc} |
| Cat. NO. | NM-KI-190102 |
| Strain State | Repository Live |

Gene Summary

| | | |
|---------------------|-----------------------|------------------------------------|
| Gene Symbol Ucp1 | Synonyms | Ucp; Slc25a7; AI385626 |
| | NCBI ID | 22227 |
| | MGI ID | 98894 |
| | Ensembl ID | ENSMUSG00000031710 |
| | Human Ortholog | UCP1 |

Model Description

A Kozak-CreERT2-WPRE-polyA expression cassette was knocked into the Ucp1 gene start codon site.

Research Application: Cre recombinase tool

*Literature published using this strain should indicate: Ucp1-CreERT2 mice (Cat. NO. NM-KI-190102) were purchased from Shanghai Model Organisms Center, Inc..

Validation Data

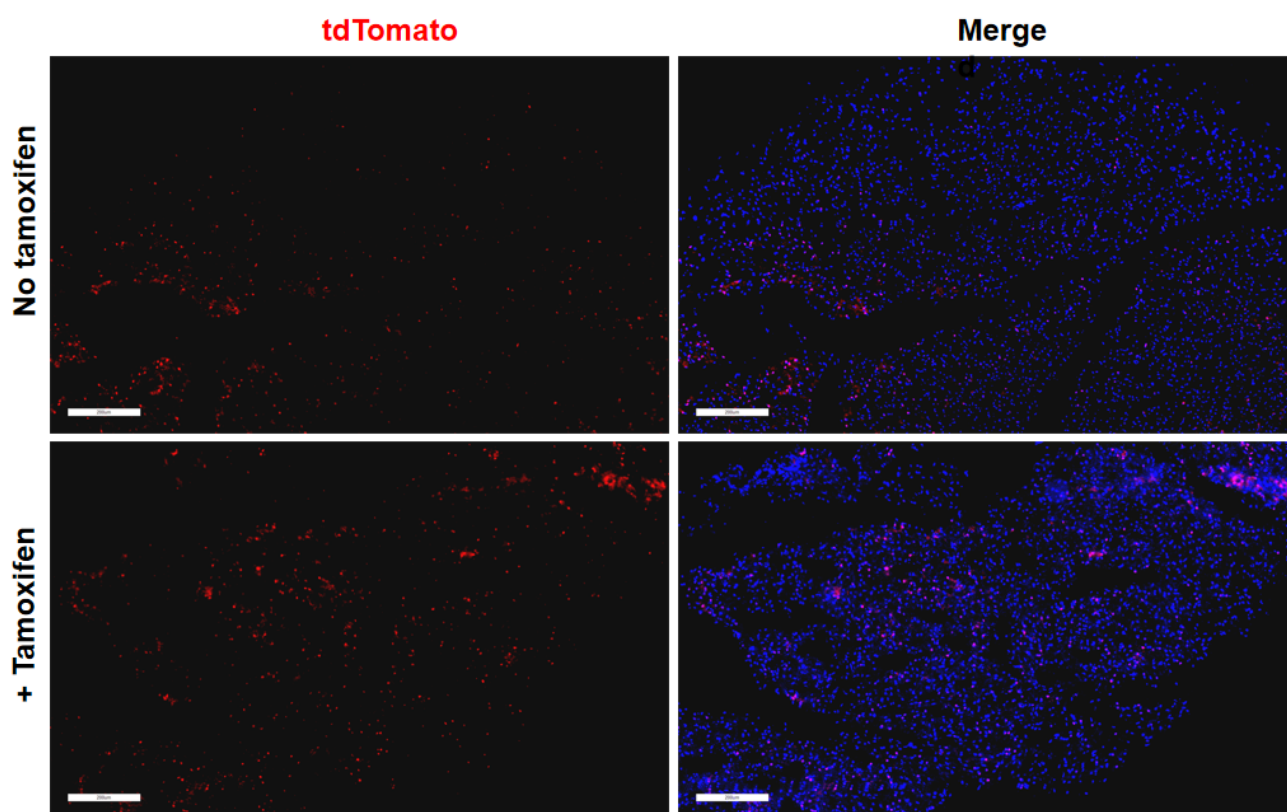


Fig1. Cre mediated recombination in brown fat of Ucp1CreERT2/+;Rosa26tdTomato/+ mouse.

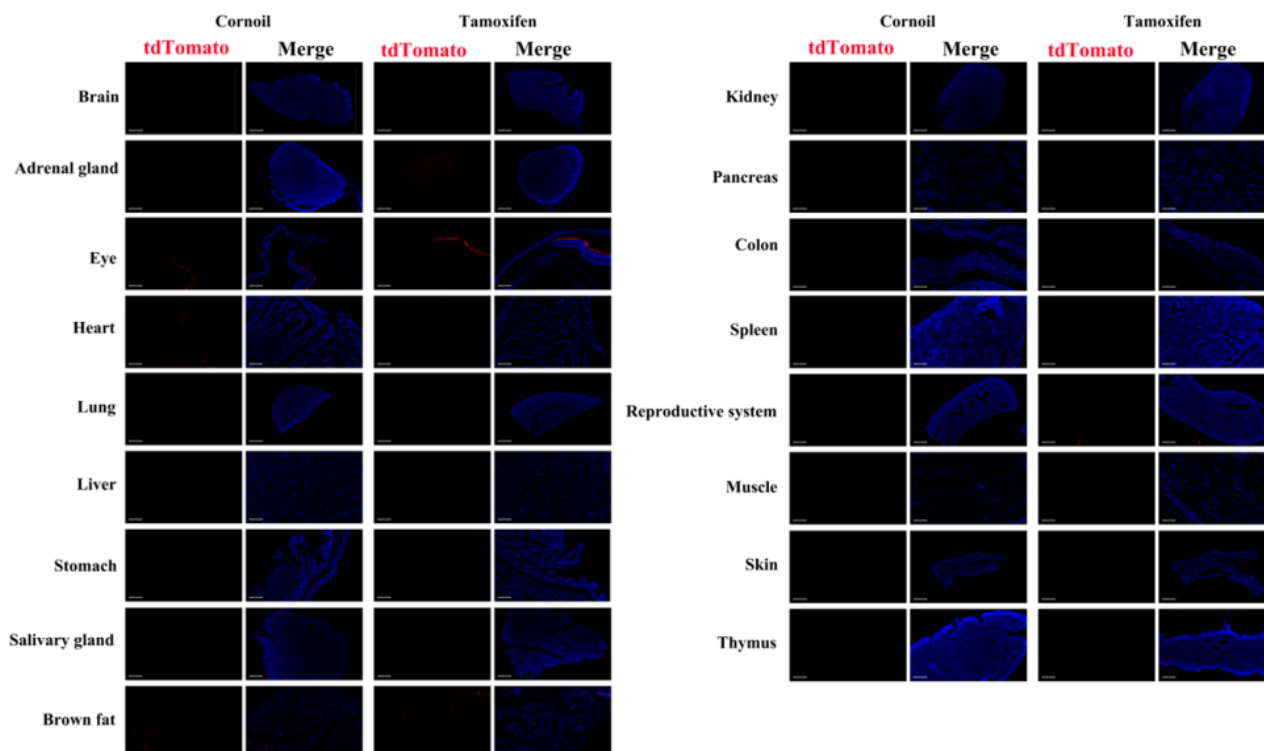


Fig2. Detection of tdTomato(red) in various tissues of Ucp1CreERT2/+;Rosa26tdTomato/+ mouse. Expression tissues include: brown fat. A few cells expressed in salivary gland and thymus. Tissues that unexpressed include brain, adrenal gland, retina, heart, lung, liver, stomach, kidney, pancreas, colon, spleen, uterus, muscle, and skin. (9-

week old, female) (For more detailed information please contact our technical advisor.)
