

hTLR2

Nomenclature	C57BL/6Smoc- <i>Tlr2</i> ^{em2(hTLR2)Smoc}
Cat. NO.	NM-HU-190066
Strain State	Embryo cryopreservation

Gene Summary

Gene Symbol Tlr2	Synonyms	Ly105
	NCBI ID	24088
	MGI ID	1346060
	Ensembl ID	ENSMUSG00000027995
	Human Ortholog	TLR2

Model Description

The endogenous mouse *Tlr2* gene was replaced by human *TLR2* gene.

Research Application: Immunotherapy,cancer research,drug screening

*Literature published using this strain should indicate: hTLR2 mice (Cat. NO. NM-HU-190066) were purchased from Shanghai Model Organisms Center, Inc..

Validation Data

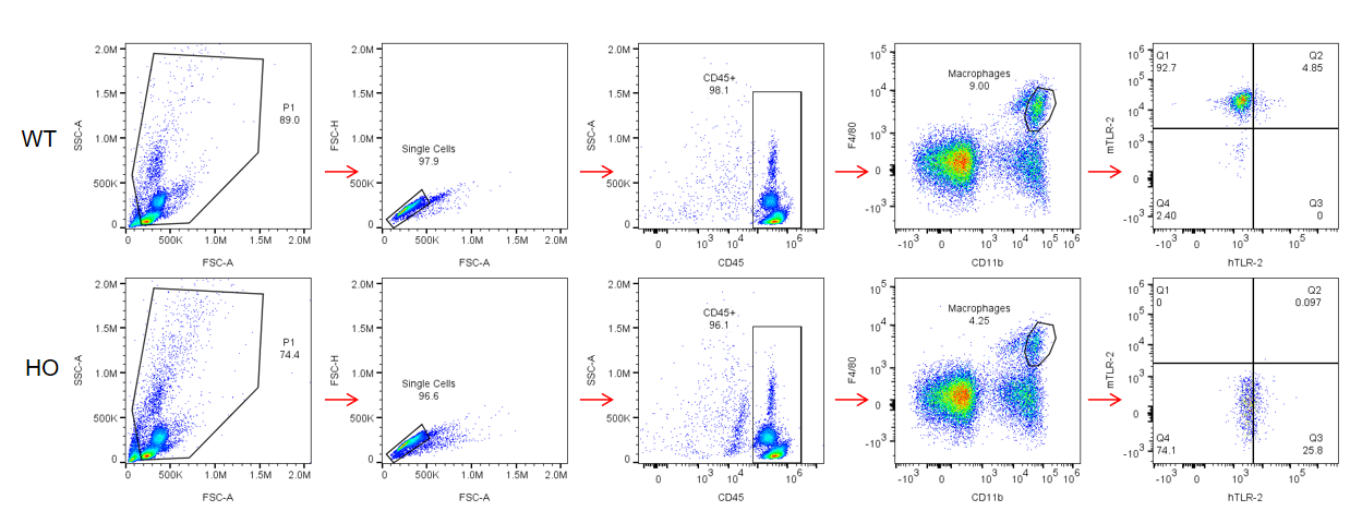


Fig1. Strain specific hTLR2 expression analysis in homozygous hTLR2 mice by flow cytometry. Macrophages of PBMC were collected from WT and homozygous hTLR2 mice, and analyzed by

flow cytometry with species-specific anti-hTLR2 and anti-mTLR2 antibody. hTLR2 was detectable in a subset of macrophages in homozygous hTLR2 mice, and the mTLR2 was not expressed.
