

# Col1a2-2A-DreERT2

<b>Nomenclature</b>	C57BL/6Smoc- <i>Col1a2</i> <sup>em1(2A-DreERT2-Wpre-pA)Smoc</sup>
<b>Cat. NO.</b>	NM-KI-210109
<b>Strain State</b>	Sperm cryopreservation

## Gene Summary

<b>Gene Symbol</b> Crbn	<b>Synonyms</b>	piL; AF229032; AW108261; 2610203G15Rik; 2900045O07Rik
	<b>NCBI ID</b>	<a href="#">58799</a>
	<b>MGI ID</b>	<a href="#">1913277</a>
	<b>Ensembl ID</b>	<a href="#">ENSMUSG000000005362</a>
	<b>Human Ortholog</b>	CRBN

## Model Description

2A-DreERT2-Wpre-pA expression cassette was knocked into the Col1a2 gene .

\*Literature published using this strain should indicate: Col1a2-2A-DreERT2 mice (Cat. NO. NM-KI-210109) were purchased from Shanghai Model Organisms Center, Inc..

## Validation Data

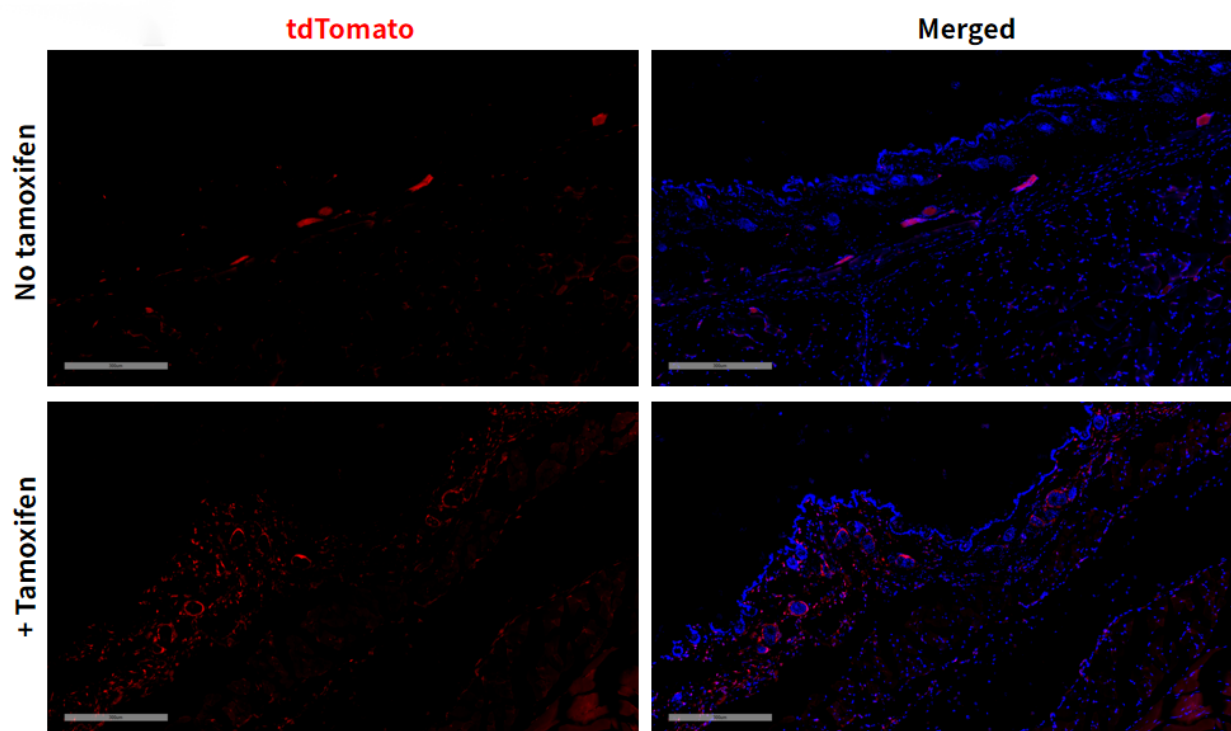


Fig 1. DreERT2-mediated recombination in skin of Col1a2DreERT2/+; Rosa26tdTomato/+ mice.

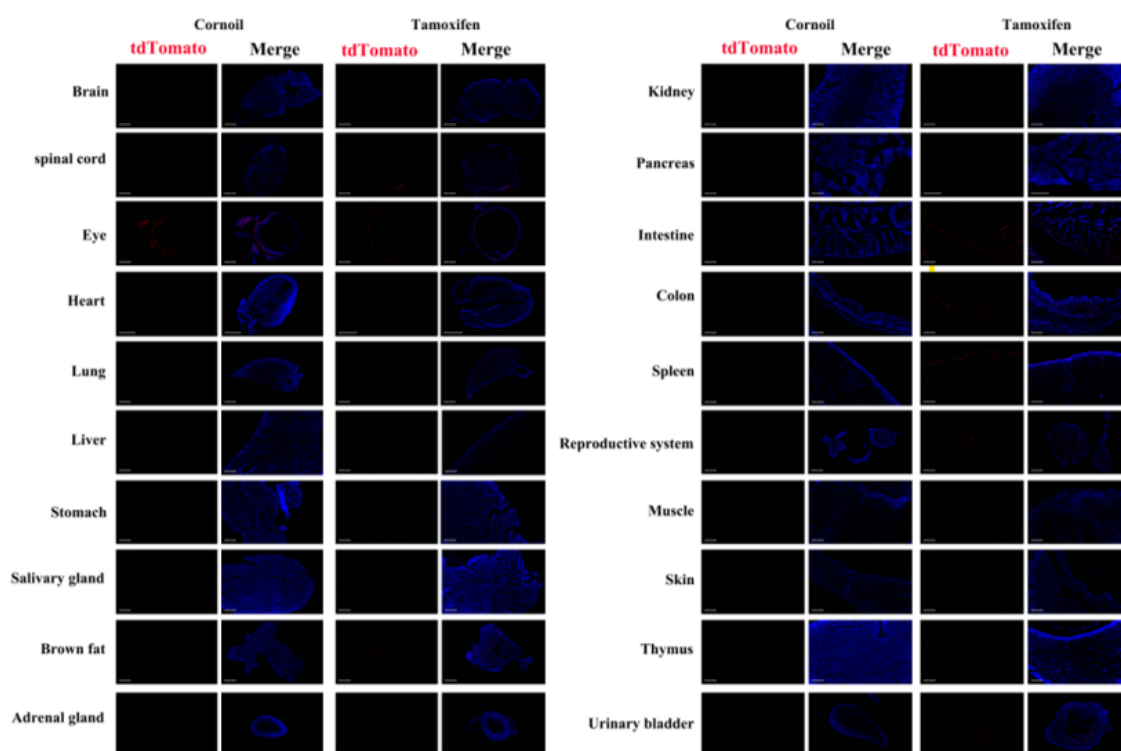


Fig 2. Detection of tdTomato (red) in various tissues of Col1a2DreERT2/+; Rosa26tdTomato/+. Expression tissues include: lung, small and large intestine, spleen, ovary, bladder, skin. A few cells expressed in spinal cord, liver, stomach, salivary glands, kidney, pancreas, thymus, muscle. Tissues that unexpressed include brain, retina, heart, brown fat, adrenal glands. (9-week old, female) (For more detailed information please contact our technical advisor.)

