

# MC38-hPD-L1/hCD47(2)

## Strain Information

Cat. NO.	NM-S13-TM28
Cell Line	MC38- <i>Cd274</i> <sup>em1(hCD274)Smoc</sup> <i>Cd47</i> <sup>em1(hCD47)Smoc</sup>
Strain State	Validation of tumorigenic capacity completed
Model Description	The endogenous mouse Cd274/hCd47 gene was replaced by human CD274/hCD47 gene.
	*Literature published using this strain should indicate: MC38-hPD-L1/hCD47(2) cell line (Cat. NO. NM-S13-TM28) was purchased from Shanghai Model Organisms Center, Inc..

## Validation Data

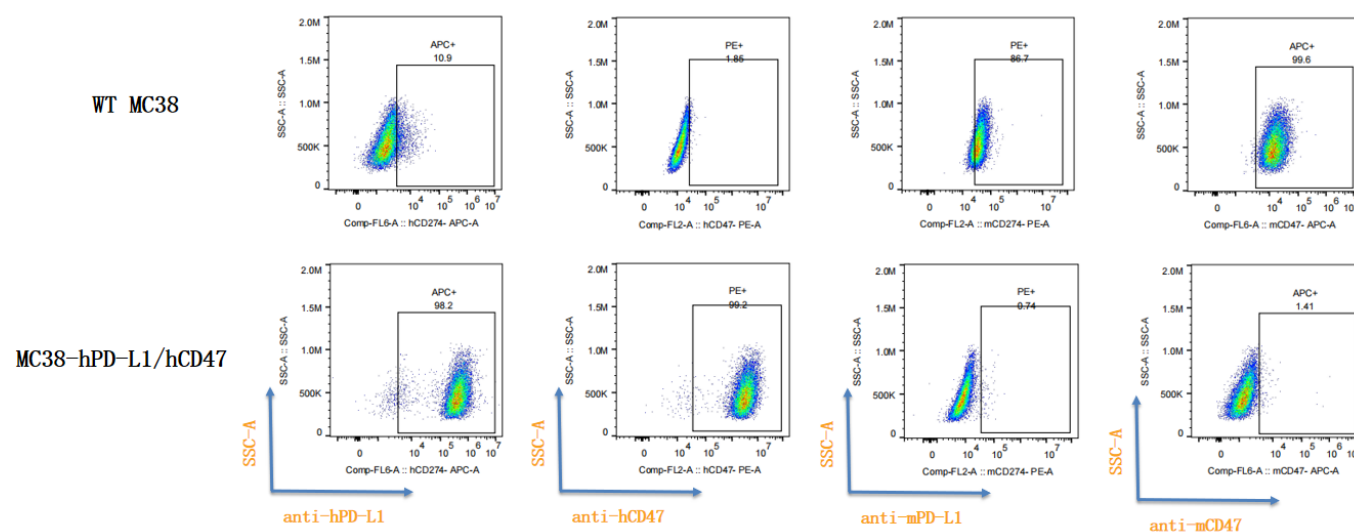


Fig1. hPD-L1 and hCD47 expression *in vitro* cultured cells of MC38-hPD-L1/hCD47.

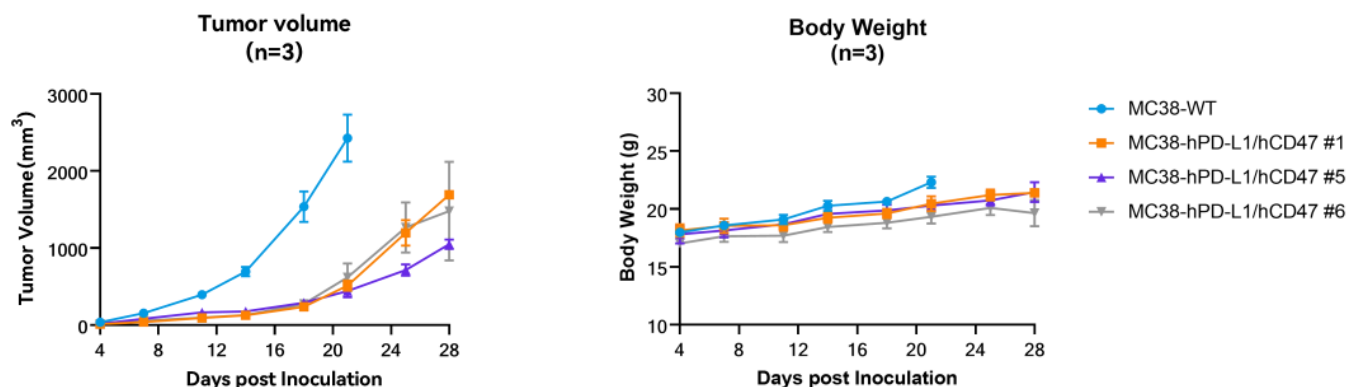


Fig2. *In vivo* validation of MC38-hPD-L1/hCD47 in C57BL/6 mice. C57BL/6 mice were inoculated with MC38-hPD-L1/hCD47 subcutaneously at  $1 \times 10^6$  cells/mouse inoculum for tumor development.

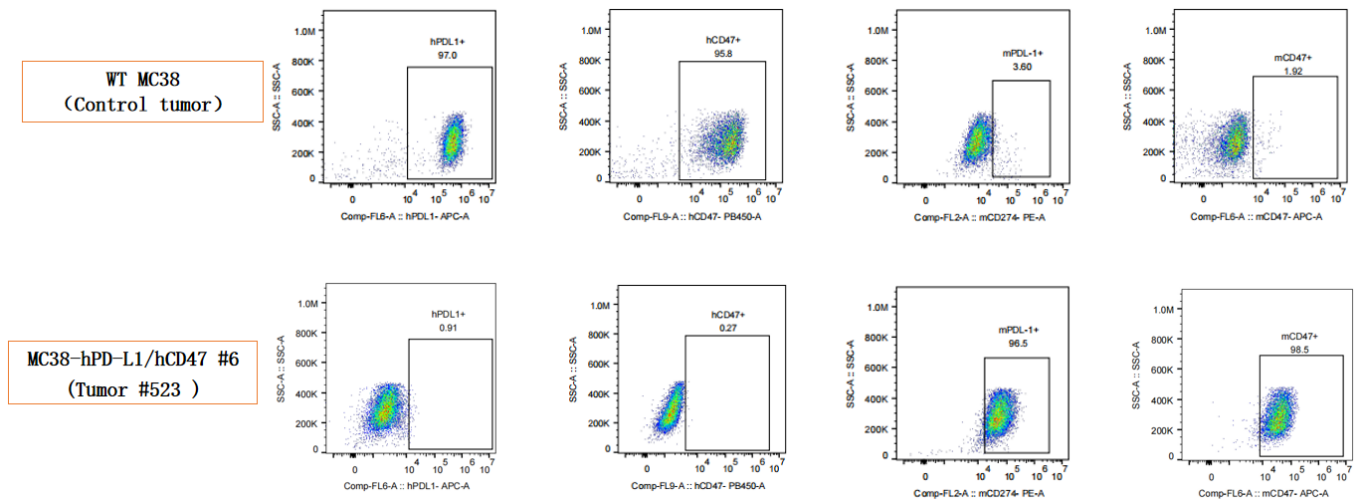


Fig3. hPD-L1 and hCD47 expression in tumors after *in vivo* growth of MC38-hPD-L1/hCD47 in wild type C57BL/6 mice. The tumors were collected at day 25 post tumor cell inoculation.