



hMAPT

Nomenclature	C57BL/6Smoc- <i>Mapt</i> ^{tm1(hMAPT)Smoc}
Cat. NO.	NM-HU-200116
Strain State	Repository Live

Gene Summary

Gene Symbol Mapt	Synonyms	Tau; Mtapt; AI413597; AW045860
	NCBI ID	17762
	MGI ID	97180
	Ensembl ID	ENSMUSG00000018411
	Human Ortholog	MAPT

Model Description

The endogenous mouse *Mapt* gene was replaced by human MAPT gene. While hMAPT(2)(Stock No.NM-HU-200257) mice function similarly to hMAPT mice,for more detailed information please contact our technical advisor.

*Literature published using this strain should indicate: hMAPT mice (Cat. NO. NM-HU-200116) were purchased from Shanghai Model Organisms Center, Inc..

Validation Data

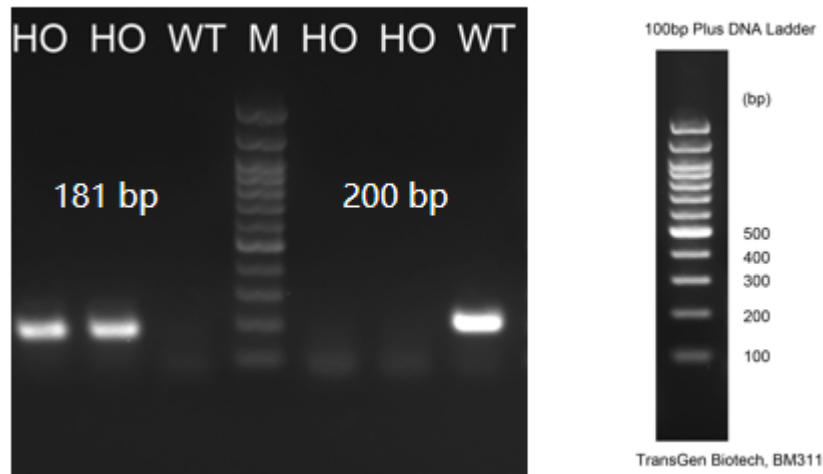


Fig.1 Detection of MAPT expression in cerebellum by RT-PCR.

Wild type: only one band at 200 bp with primers F1/R1 (mMapt);

Homozygous: only one band at 181 bp with primers F2/R2 (hMAPT);

Abbr. M, DNA marker; HO, homozygous; WT, wild type.

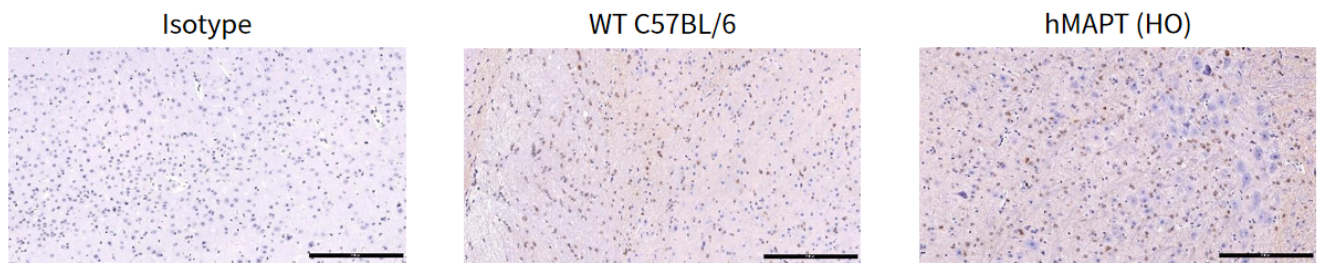


Fig 2. Detection of mouse MAPT expression in Brain in hMAPT knockin mice by IHC.

Brains were collected from wild-type mice (+/+) and homozygous hMAPT mice (HO), and analyzed by IHC with anti-human MAPT antibody.

Abbr. HO/HO, homozygous; +/+, wild type.

Note. The anti-mouse MAPT Antibody cross-reacted with mouse MAPT and humanized MAPT.

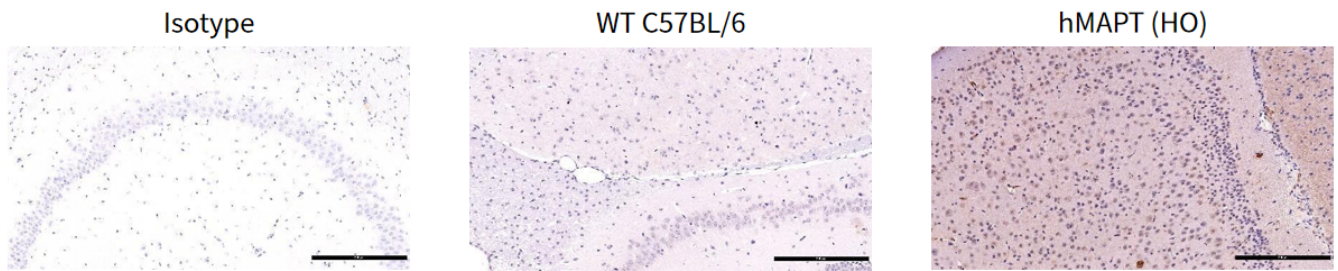


Fig 3. Detection of human MAPT expression in Brain in hMAPT knockin mice by IHC.

Brains were collected from wild-type mice (+/+) and homozygous hMAPT mice (HO), and analyzed by IHC with anti-human MAPT antibody.

Abbr. HO/HO, homozygous; +/+, wild type.

Note. The anti-human MAPT Antibody cross-reacted with mouse MAPT and humanized MAPT.

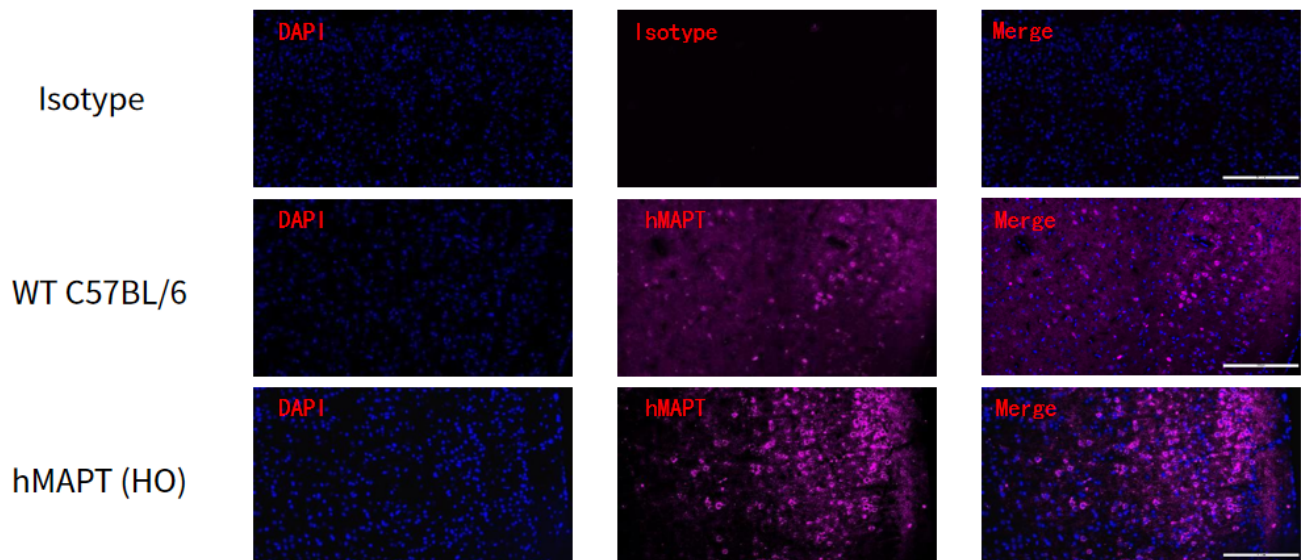


Fig 4. Detection of human MAPT expression in Brain in hMAPT knockin mice by IF.

Brains were collected from wild-type mice (+/+) and homozygous hMAPT mice (HO), and analyzed by IF with anti-human MAPT antibody.

Abbr. HO/HO, homozygous; +/+, wild type.

Note. The anti-human MAPT Antibody cross-reacted with mouse MAPT and humanized MAPT.