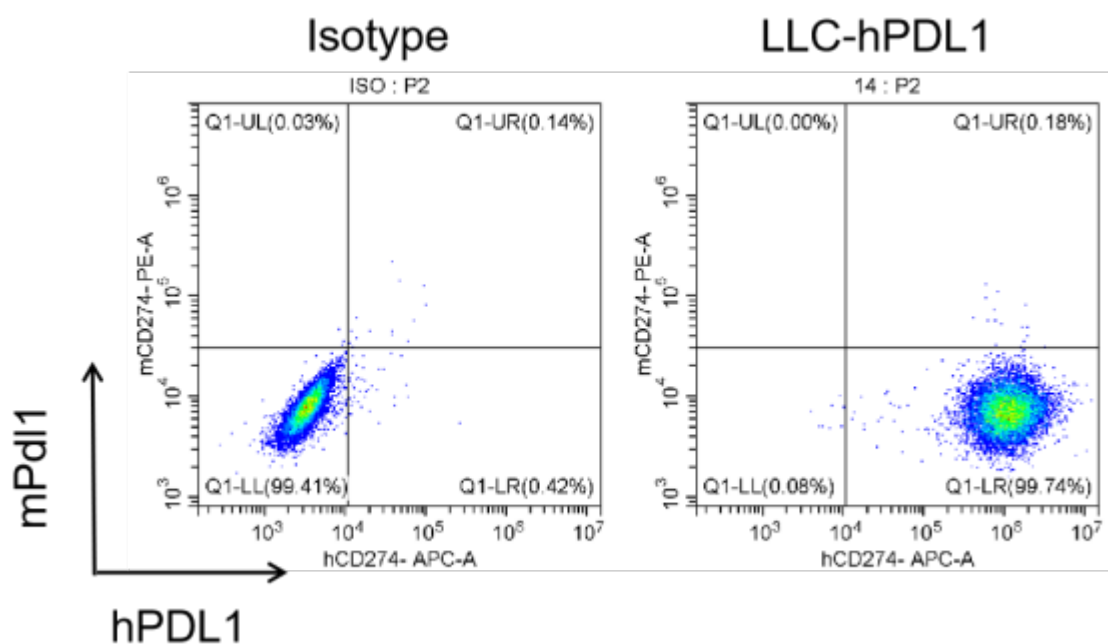


# LLC1/LL2-hPD-L1

## Strain Information

Cat. NO.	NM-S30A-TM01
Cell Line	LLC1/LL2- <i>Cd274</i> <sup>em1(hCD24)Smoc</sup>
Strain State	Validation of tumorigenic capacity completed
Model Description	The endogenous mouse Cd274(also known as PD-l1) gene was replaced by human PDL1 gene.
	*Literature published using this strain should indicate: LLC1/LL2-hPD-L1 cell line (Cat. NO. NM-S30A-TM01) was purchased from Shanghai Model Organisms Center, Inc..

## Validation Data



**Figure 1. hPD-L1 expression in LLC1-hPD-L1 cell lines.**

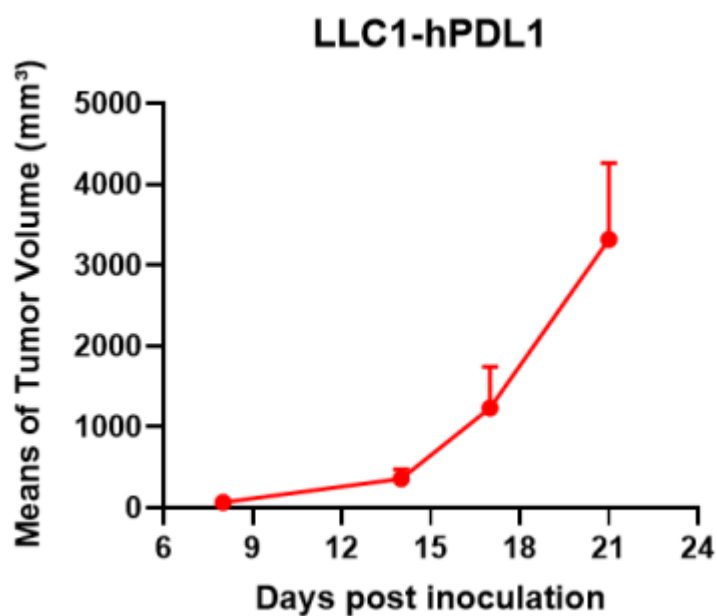


Figure 2. Tumor growth curve of LLC1-hPDL1 syngeneic model (n=3).

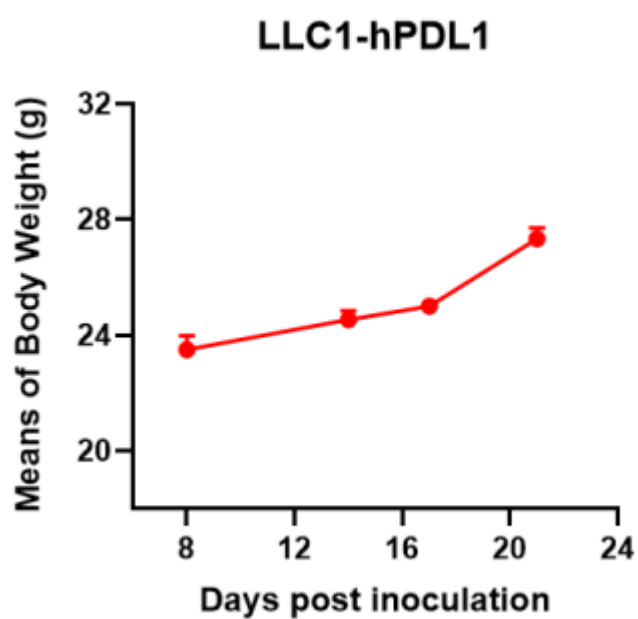


Figure 3. Body weight change of LLC1-hPDL1 syngeneic model (n=3).