

Lum-2A-CreERT2

Nomenclature	C57BL/6Smoc- <i>Lum</i> ^{em1(2A-CreERT2)Smoc}
Cat. NO.	NM-KI-210447
Strain State	Sperm cryopreservation

Gene Summary

Gene Symbol Lum	Synonyms	Ldc; SLRR2D
	NCBI ID	17022
	MGI ID	109347
	Ensembl ID	ENSMUSG00000036446
	Human Ortholog	LUM

Model Description

2A-CreERT2 expression cassette was knocked into the Lum gene stop codon site.

*Literature published using this strain should indicate: Lum-2A-CreERT2 mice (Cat. NO. NM-KI-210447) were purchased from Shanghai Model Organisms Center, Inc..

Validation Data

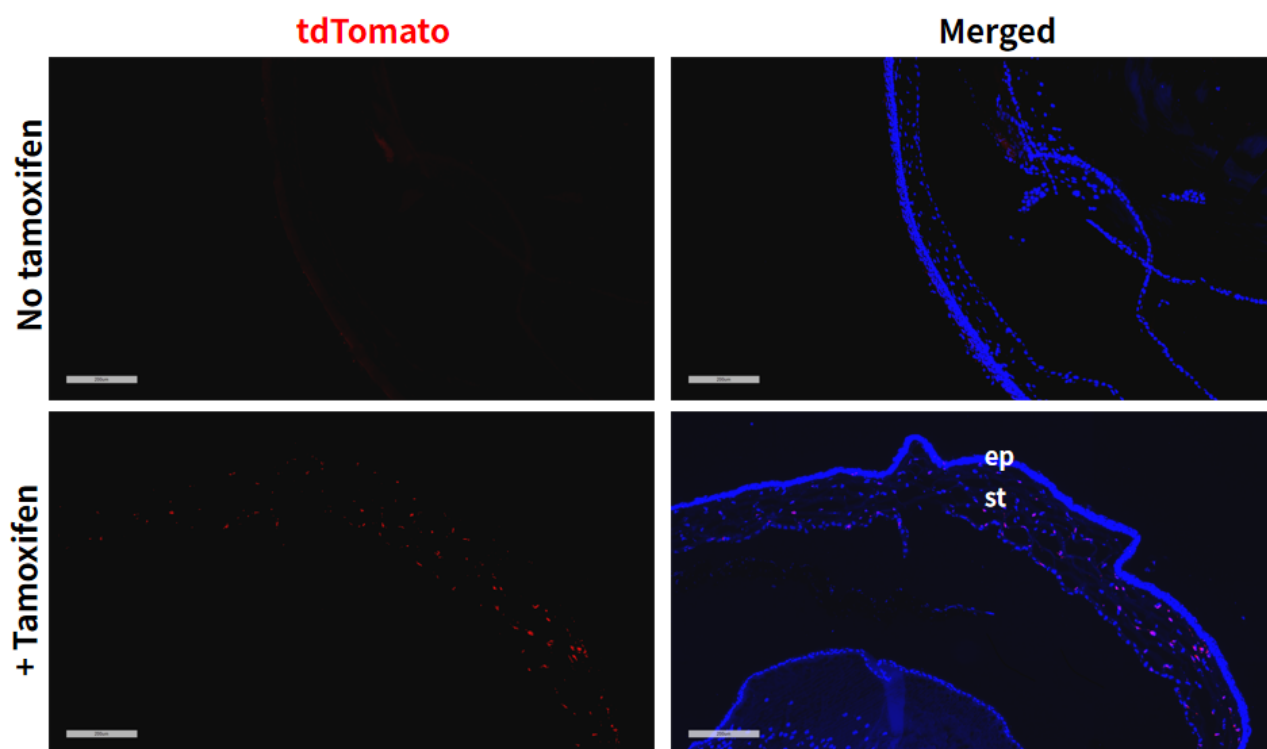


Fig1. Cre mediated recombination in Cornea of *LumCreERT2/+;Rosa26tdTomato/+* mouse. (ep, epithelium; st, stroma.)

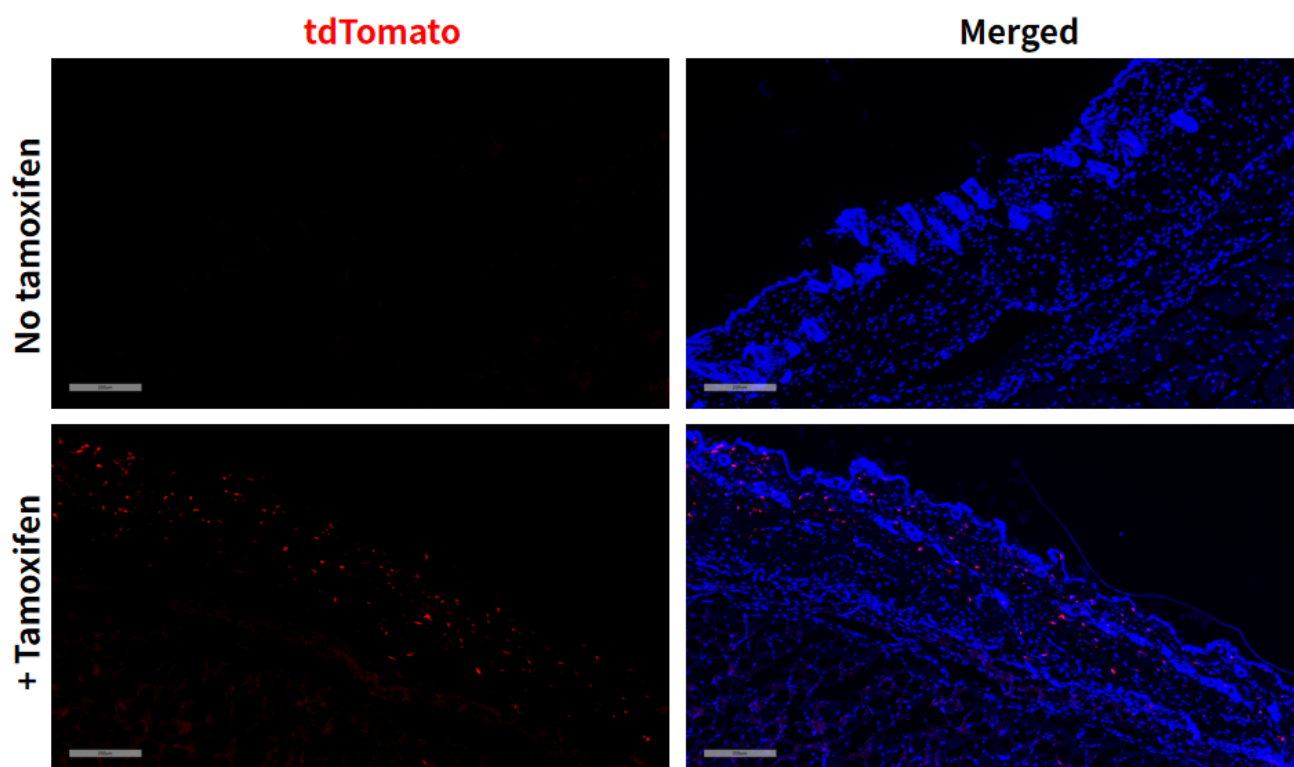


Fig2. Cre mediated recombination in skin of *LumCreERT2/+;Rosa26tdTomato/+* mouse.

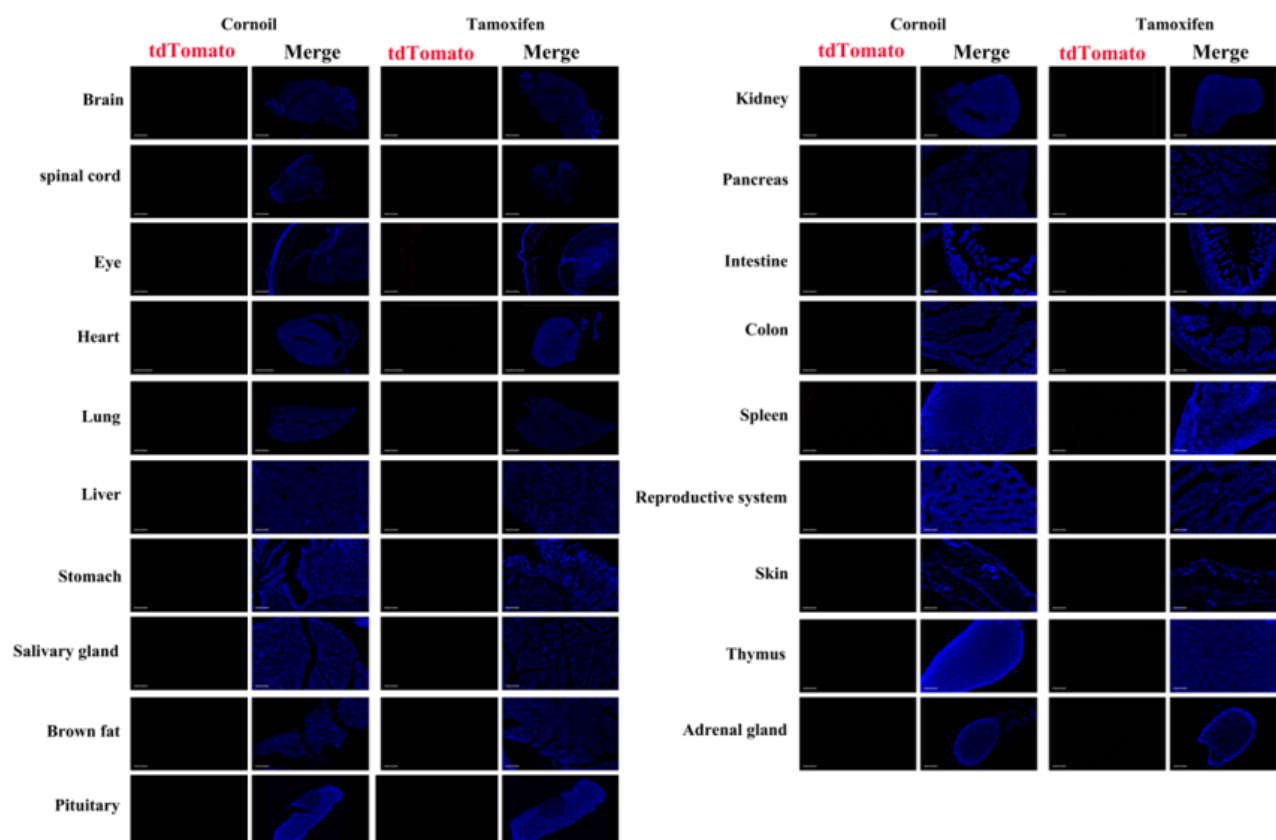


Fig3. Detection of tdTomato(red) in various tissues of LumCreERT2/+;Rosa26tdTomato/+ mouse. Expression tissues include: cornea, skin, stomach, small intestine, colon, spleen and adrenal gland. A few cells expressed in spinal cord, salivary gland, thymus. Tissues that unexpressed include brain, heart, lung, liver, brown fat, pituitary, kidney, pancreas and testis. (9-week old, male) (For more detailed information please contact our technical advisor.)