

R26-CAG-LSL-hDSG2

Nomenclature	C57BL/6Smoc- <i>Gt(ROSA)26Sor</i> ^{em1(CAG-LSL-hDSG2-WPRE-pA)Smoc}
Cat. NO.	NM-KI-210444
Strain State	Repository Live

Gene Summary

Gene Symbol Gt(ROSA)26Sor	Synonyms	R26, ROSA26, AV258896, Gtrg eo26, Gtrosa26, Thumpd3as1
	NCBI ID	14910
	MGI ID	104735
	Ensembl ID	ENSMUSG00000086429

Model Description

CAG-LSL-hDSG2-WPRE-pA expression cassette was knocked into the Rosa26 locus.

*Literature published using this strain should indicate: R26-CAG-LSL-hDSG2 mice (Cat. NO. NM-KI-210444) were purchased from Shanghai Model Organisms Center, Inc..

Validation Data

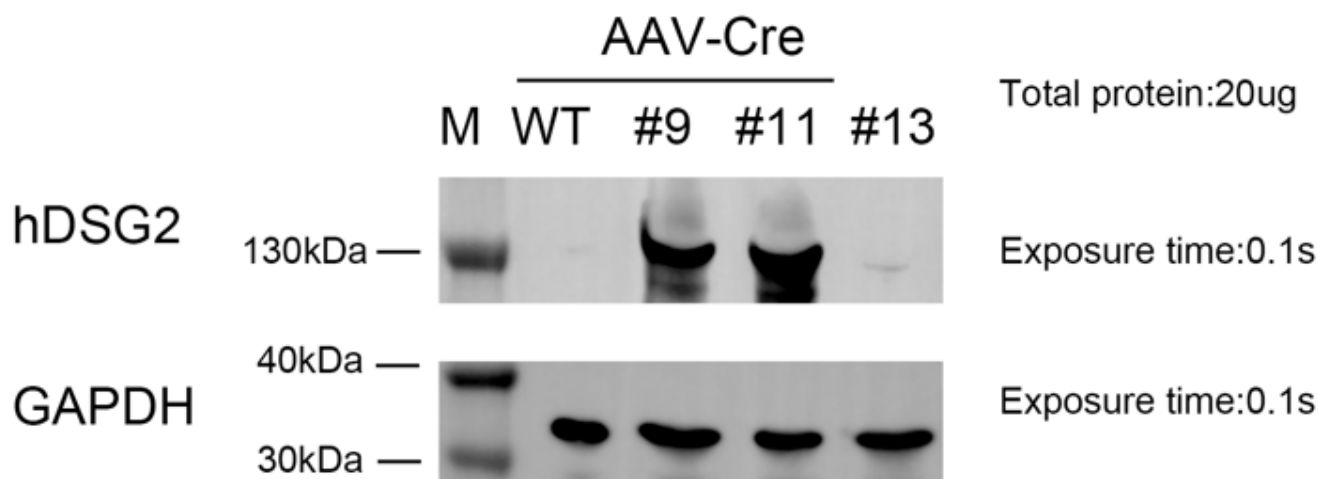


Fig.1 Detection of hDSG2 expression in C57BL/6 and HE R26-CAG-LSL-hDSG2 mice by WB (male, 9wks).

Abbr. M, marker; WT, wild type.
