

# Trp63-CreERT2

<b>Nomenclature</b>	C57BL/6Smoc- <i>Trp63</i> <sup>em(CreERT2-WPRE-polyA)Smoc</sup>
<b>Cat. NO.</b>	NM-KI-225021
<b>Strain State</b>	Sperm cryopreservation

## Gene Summary

<b>Gene Symbol</b> Trp63	<b>Synonyms</b>	Ket; P63; P73l; Tp63; P51/P63; AI462811; Trp53rp1
	<b>NCBI ID</b>	<a href="#">22061</a>
	<b>MGI ID</b>	<a href="#">1330810</a>
	<b>Ensembl ID</b>	<a href="#">ENSMUSG00000022510</a>
	<b>Human Ortholog</b>	-

## Model Description

A CreERT2-Wpre-polyA expression cassette was knocked into the exon4 of Trp63 gene via CRISPR/Cas mediated recombination.

\*Literature published using this strain should indicate: Trp63-CreERT2 mice (Cat. NO. NM-KI-225021) were purchased from Shanghai Model Organisms Center, Inc..

## Validation Data

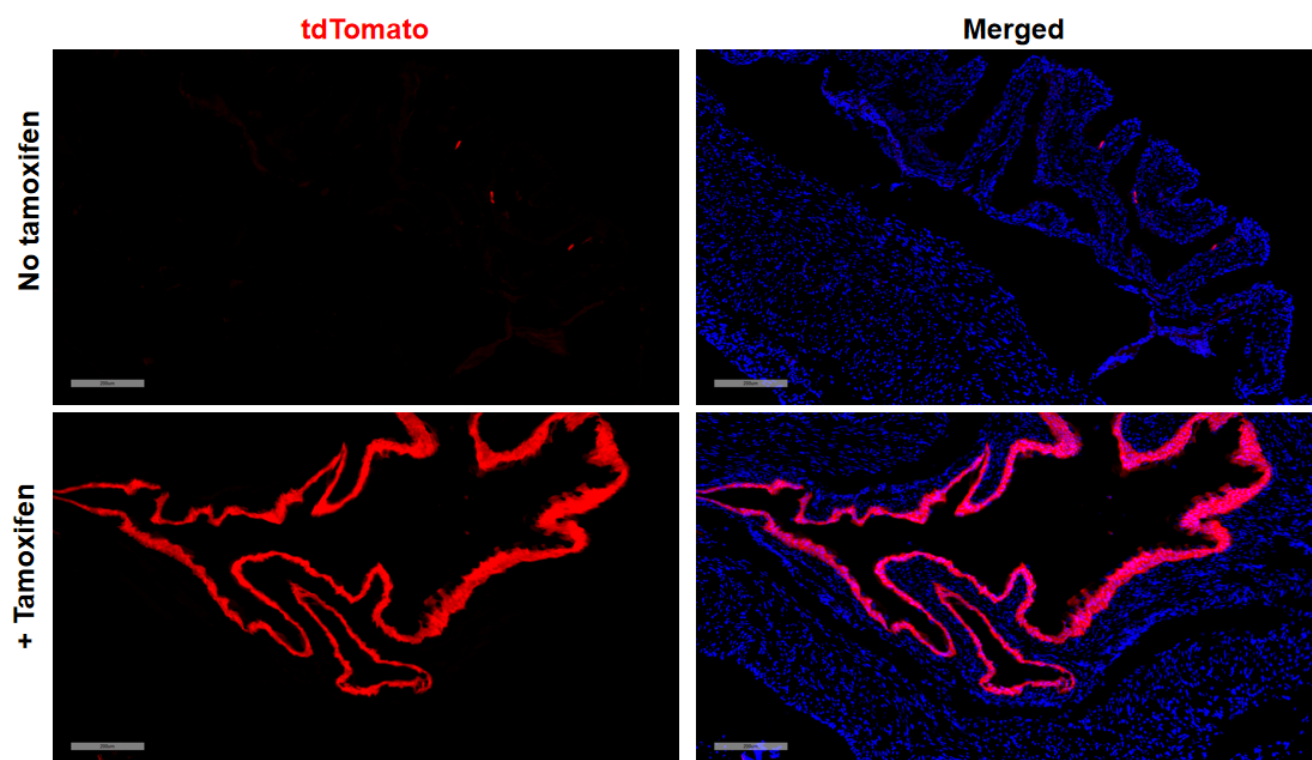


Fig1. Cre mediated recombination in bladder of Trp63CreERT2/+;Rosa26tdTomato/+ mouse.

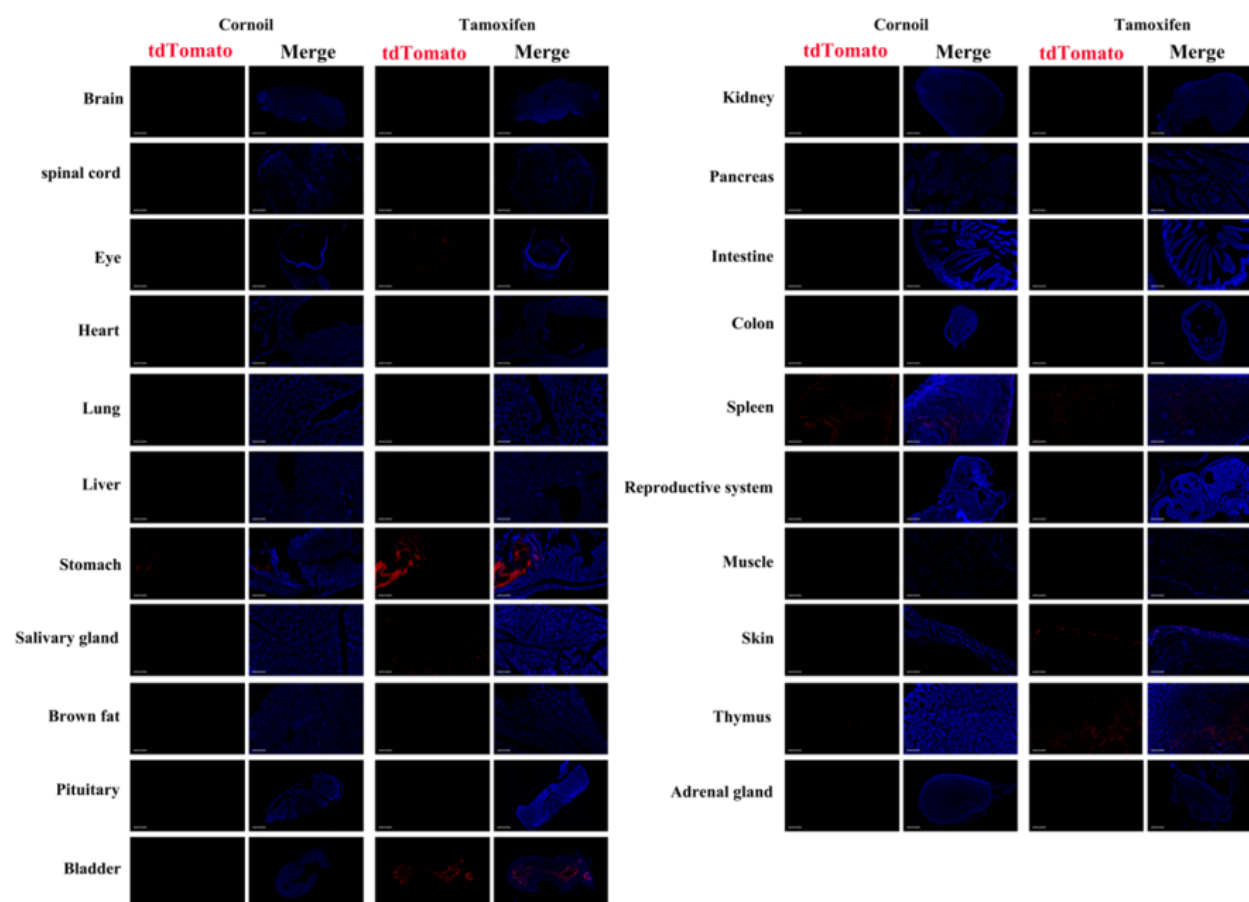


Fig2. Detection of tdTomato(red) in various tissues of

Trp63CreERT2/+;Rosa26tdTomato/+ mouse. Expression tissues include: bladder, skin, cornea, stomach, salivary gland, thymus. A few cells expressed in kidney and spleen. Tissues that unexpressed include brain, spinal cord, heart, lung, liver, brown fat, pituitary, pancreas, small intestine, colon, ovary and uterus, skeletal muscle, adrenal gland. (53-day old, female) (For more detailed information please contact our technical advisor.)

---