

MC38-hPD-L1(2)

Strain Information

Cat. NO.	NM-S13-TM86
Cell Line	MC38- <i>Cd274</i> ^{tm(hPD-L1)Smoc}
Strain State	Validation of tumorigenic capacity completed
Model	This cell line carry humanized CD274.
Description	*Literature published using this strain should indicate: MC38-hPD-L1(2) cell line (Cat. NO. NM-S13-TM86) was purchased from Shanghai Model Organisms Center, Inc..

Validation Data

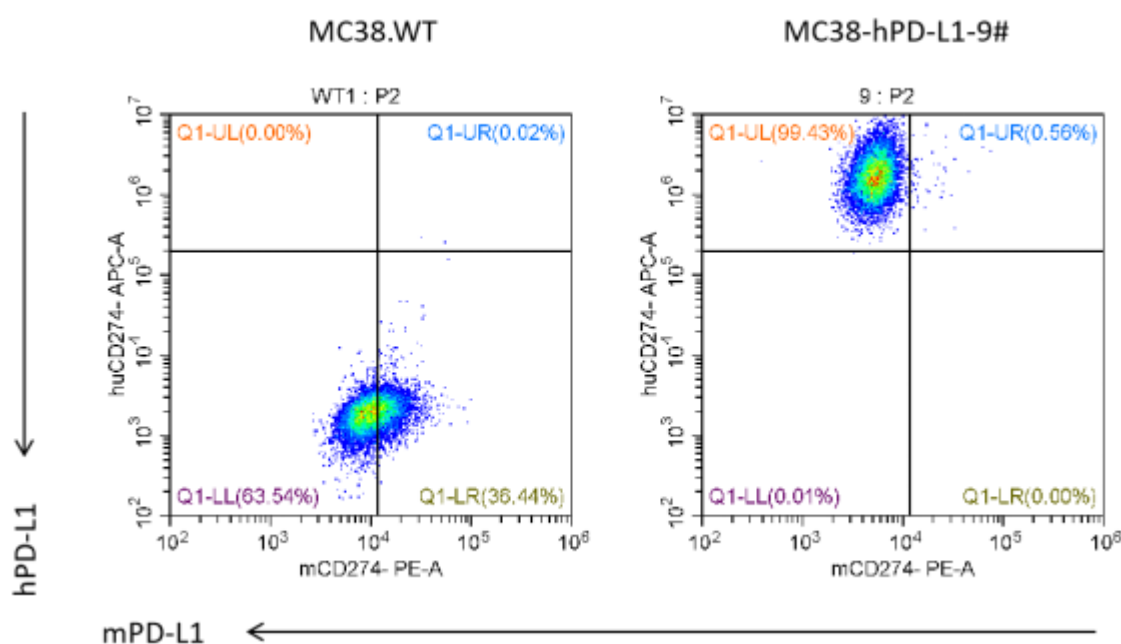


Figure 1. Expression of human PD-L1 on MC38-hPD-L1 cells was confirmed by flow cytometry.

MC38-hPD-L1 cells and wild type MC38 cells were stained with species-specific anti-PD-L1 antibodies. FACS analysis shows that human PD-L1 but not mouse PD-L1 was exclusively detectable on MC38-hPD-L1 cells.

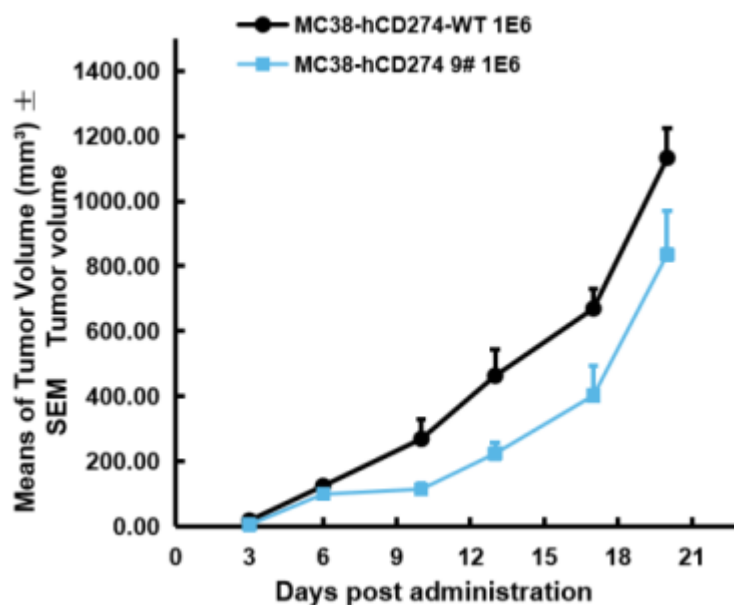


Figure 2. In vivo tumor growth curves in humanized MC38-hPD-L1 syngeneic model.

BALB/c mice were subcutaneously injected 1×10^6 MC38-hPD-L1 cells compared with wild type MC38 cells as control. Tumor growth was monitored by measuring tumor size from day 3 after subcutaneous implantation.

Data shows that there were no significant differences between MC38-hPD-L1 cells and wild type MC38 cells in either tumorigenicity or tumor growth.