

# BT-474

## Strain Information

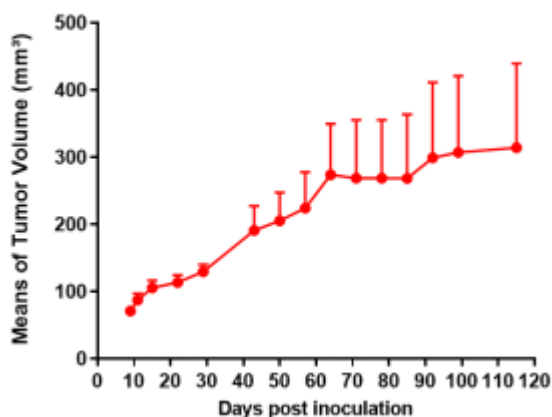
Cat. NO.	NM-R02
Cell Line	BT-474
Strain State	Validation of tumorigenic capacity completed
Model Description	BT-474 is a cell line exhibiting epithelial morphology that was isolated from a solid, invasive ductal carcinoma of the breast obtained from a 60-year-old, White, female breast cancer patient.  *Literature published using this strain should indicate: BT-474 cell line (Cat. NO. NM-R02) was purchased from Shanghai Model Organisms Center, Inc..

## Validation Data



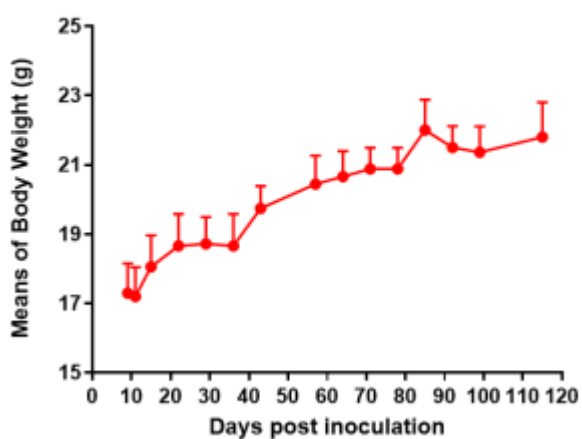
Fig1. Morphology of BT-474 cell line.

### BT-474



A

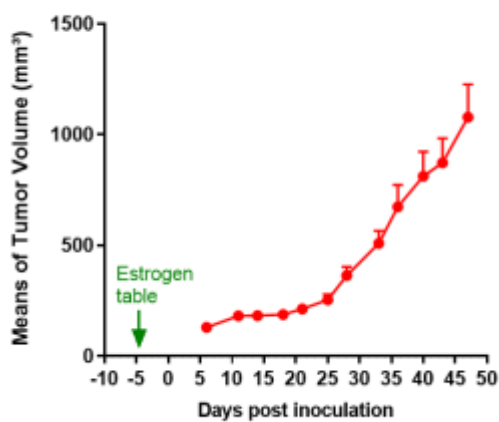
### BT-474



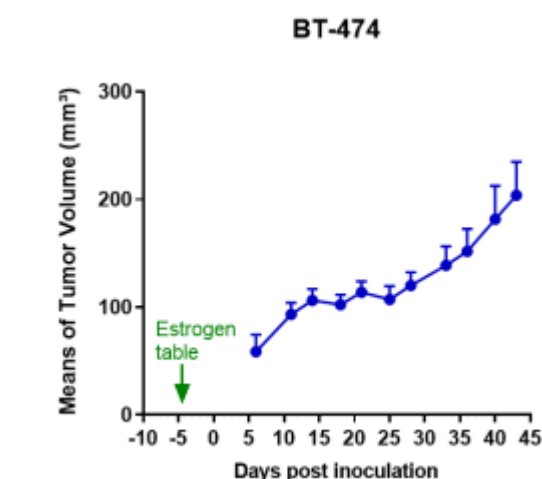
B

Fig2. Analysis of Tumorigenesis in CB17SCID mice (n=5) . a Tumor volume was measured by time. b Body weight was simultaneously checked.

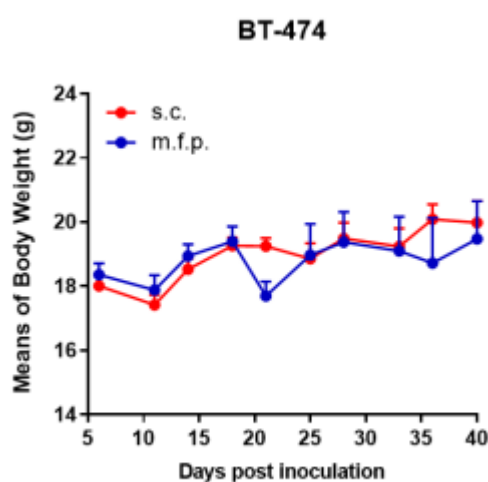
### BT-474



A



B



C

Fig3. Analysis of Tumorigenesis in M-NSG mice. (A) BT-474 cells were subcutaneously inoculated in M-NSG mice (n=10) . (B) BT-474 cells were inoculated in the fat pads of M-NSG mice (n=5) . (C) Body weight was simultaneously checked (n=5~10) .

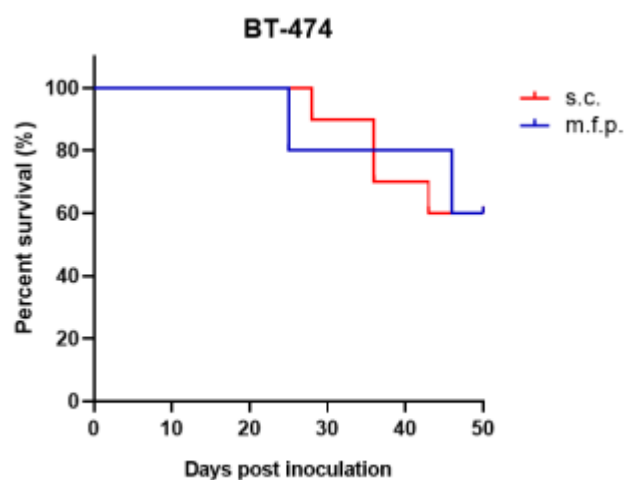


Fig4. Survival curve of M-NSG mice during tumorigenesis (n=5~10)

**\*Wild-type cell lines are not for sale, and only applied to construction of tumor bearing mice and in-vivo efficacy studies.**

---