

# SW620 [SW-620]

## Strain Information

Cat. NO.	NM-J09
Cell Line	SW620 [SW-620]
Strain State	Validation of tumorigenic capacity completed
Model Description	SW620 [SW-620] cells are isolated from the large intestine of a 51-year-old male Dukes C colorectal cancer patient.  *Literature published using this strain should indicate: SW620 [SW-620] cell line (Cat. NO. NM-J09) was purchased from Shanghai Model Organisms Center, Inc..

## Validation Data

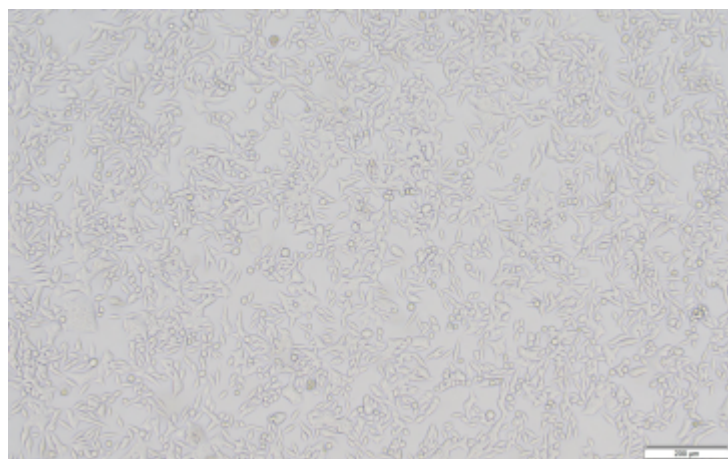
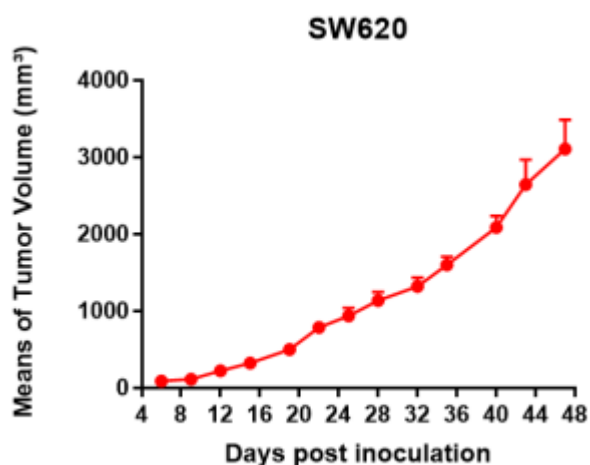
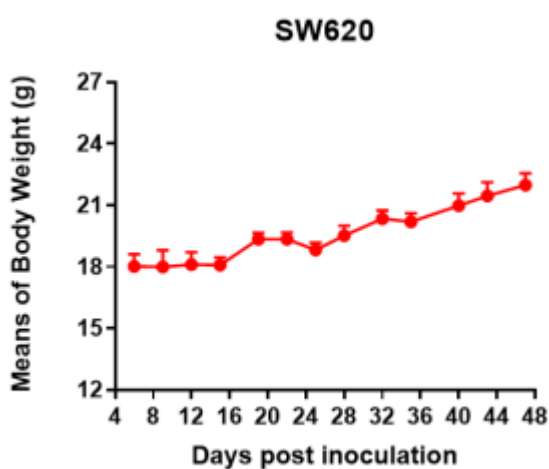


Fig1. Morphology of SW620 cell line.



A



B

Fig2. Analysis of Tumorigenesis in M-NSG mice (n=2) . A Tumor volume was measured by time. B Body weight was simultaneously checked.

\*Wild-type cell lines are not for sale, and only applied to construction of tumor bearing mice and in-vivo efficacy studies.