

# PANC-1

## Strain Information

|                   |   |
|-------------------|---|
| Cat. NO.          | NM-YX01A  |
| Cell Line         | PANC-1  |
| Strain State      | Validation of tumorigenic capacity completed  |
| Model Description | Established from a pancreatic carcinoma of ductal origin from a 56-year-old Caucasian male.   |
|                   | *Literature published using this strain should indicate: PANC-1 cell line (Cat. NO. NM-YX01A) was purchased from Shanghai Model Organisms Center, Inc.. |

## Validation Data

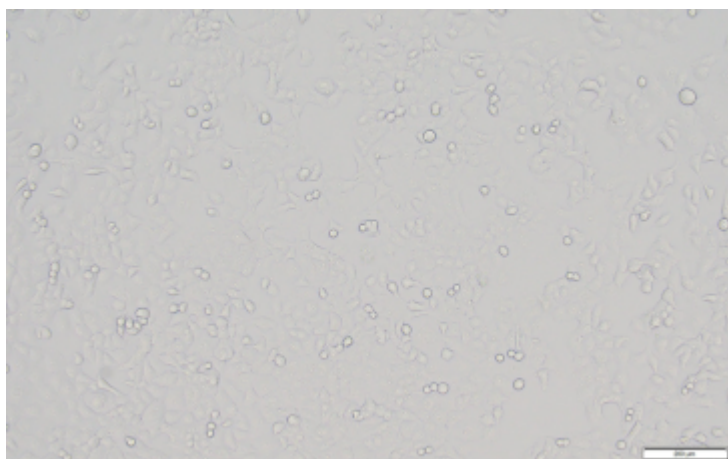
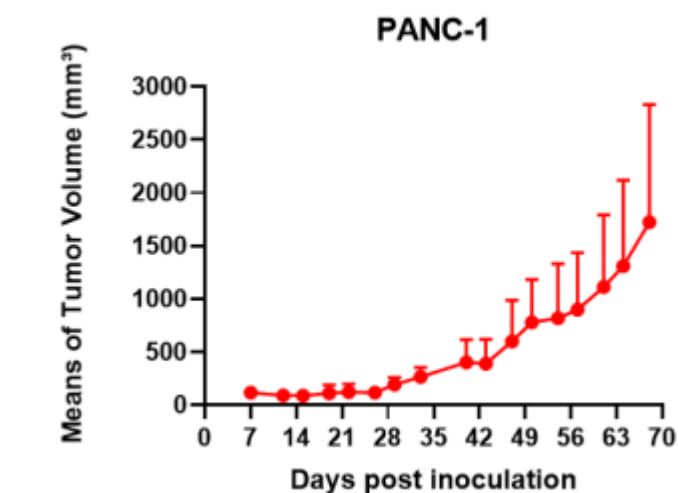
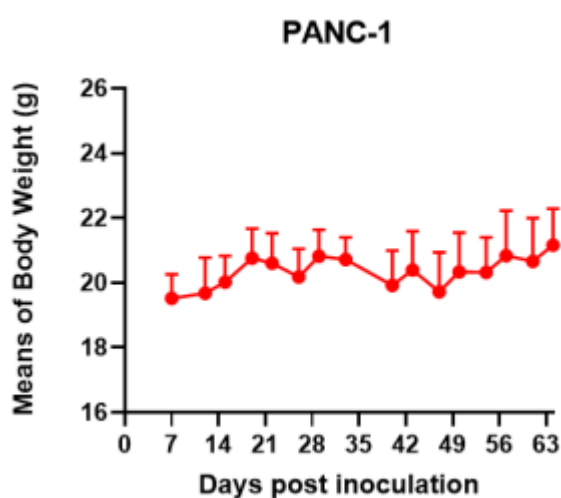


Fig1. Morphology of PANC-1 cell line.



A



B

Fig2. Analysis of Tumorigenesis in M-NSG mice (n=5) . A Tumor volume was measured by time. B Body weight was simultaneously checked.

\*Wild-type cell lines are not for sale, and only applied to construction of tumor bearing mice and in-vivo efficacy studies.