

SW1573

Strain Information

Cat. NO.	NM-FX04
Cell Line	SW1573
Strain State	Validation of tumorigenic capacity completed
Model Description	<p>The SW 1573 line was established in 1977 by A. Leibovitz from an alveolar cell carcinoma.</p> <p>*Literature published using this strain should indicate: SW1573 cell line (Cat. NO. NM-FX04) was purchased from Shanghai Model Organisms Center, Inc..</p>

Validation Data

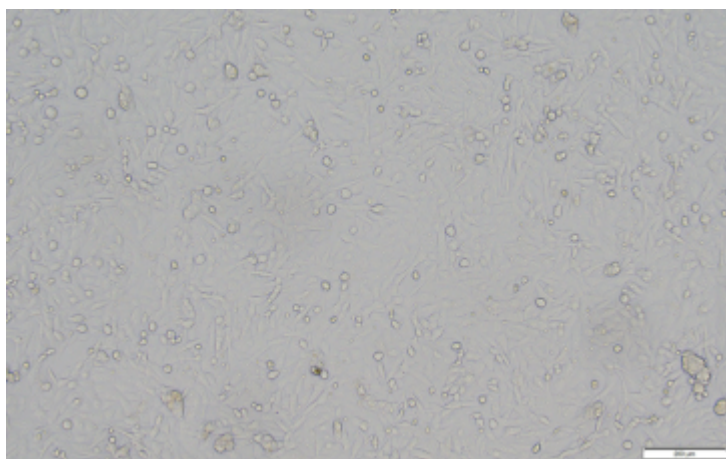
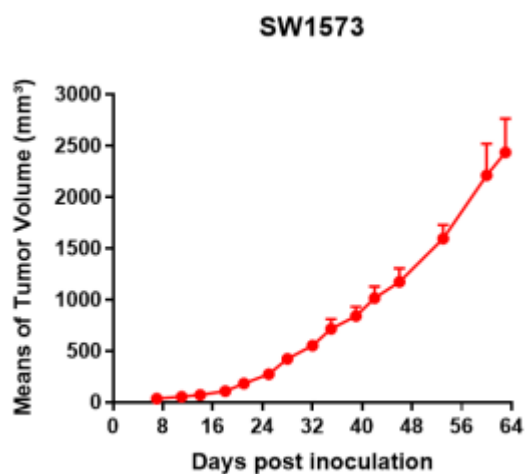
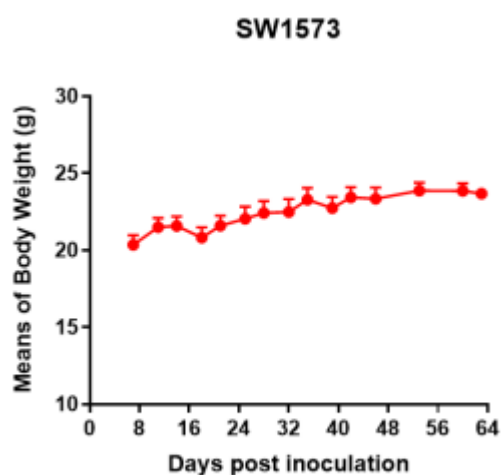


Fig1. Morphology of SW1573 cell line.



A



B

Fig2. Analysis of Tumorigenesis in M-NSG mice (n=5) . SW1573 cells were subcutaneously inoculated in M-NSG mice. a Tumor volume was measured by time. b Body weight was simultaneously checked.

*Wild-type cell lines are not for sale, and only applied to construction of tumor bearing mice and in-vivo efficacy studies.