

# HEPG2

## Strain Information

Cat. NO.	NM-G02
Cell Line	HEPG2
Strain State	Validation of tumorigenic capacity completed
Model Description	<p>Hep G2 [HEPG2] is a cell line exhibiting epithelial-like morphology that was isolated from a hepatocellular carcinoma of a 15-year-old, White, male youth with liver cancer.</p> <p>*Literature published using this strain should indicate: HEPG2 cell line (Cat. NO. NM-G02) was purchased from Shanghai Model Organisms Center, Inc..</p>

## Validation Data

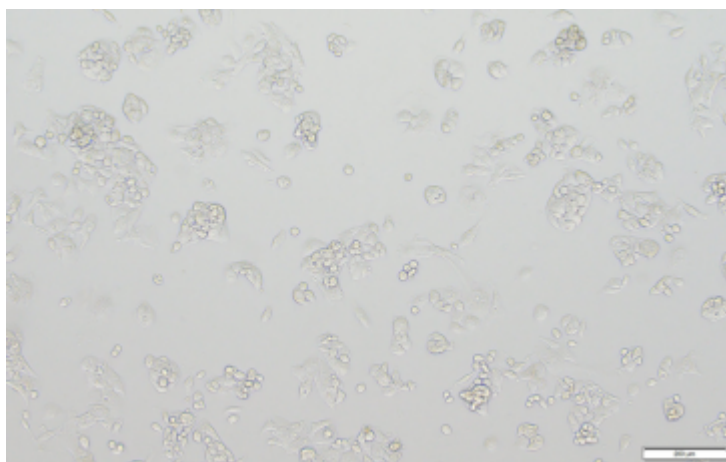
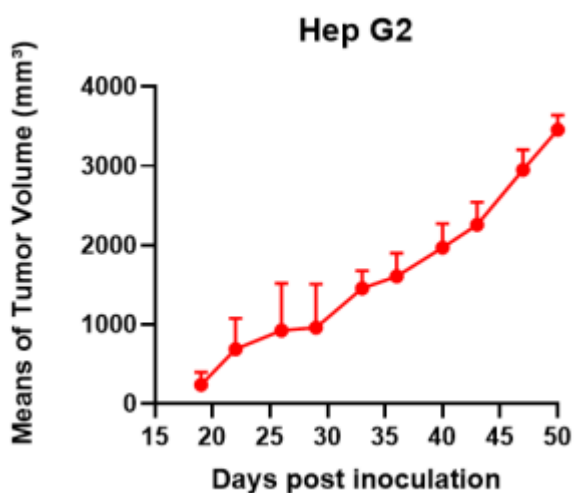
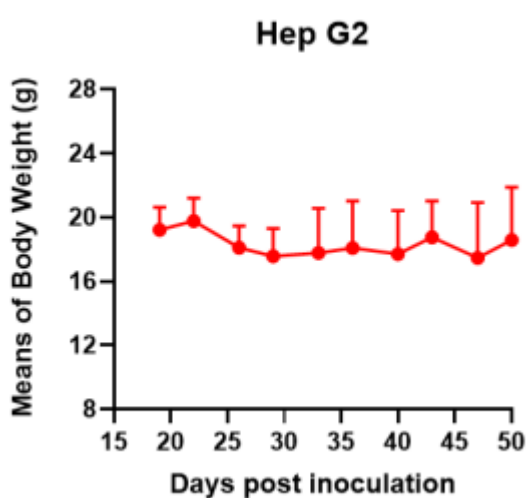


Fig1. Morphology of Hep G2 cell line.



A



B

Fig2. Analysis of Tumorigenesis in M-NSG mice (n=5) . Hep G2 cells were subcutaneously inoculated in M-NSG mice. a Tumor volume was measured by time. b Body weight was simultaneously checked.

\*Wild-type cell lines are not for sale, and only applied to construction of tumor bearing mice and in-vivo efficacy studies.