

Gad2-IRES-Cre

| | |
|---------------------|---|
| Nomenclature | C57BL/6Smoc- <i>Gad2</i> ^{em1(IRES-iCre-pA)Smoc} |
| Cat. NO. | NM-KI-200078 |
| Strain State | Repository Live |

Gene Summary

| | | |
|-----------------------------------|-----------------------|---|
| Gene Symbol Gad2 | Synonyms | GAD65; Gad-2; GAD(65); 6330404F12Rik |
| | NCBI ID | 14417 |
| | MGI ID | 95634 |
| | Ensembl ID | ENSMUSG00000026787 |
| | Human Ortholog | GAD2 |

Model Description

A IRES-iCre-pA expression cassette was knocked into the Gad2 gene stop codon site.

Research Application: By mating the reporter mice with Cre-expressing mice, Gad2 positive cells derived from double-positive mice were permanently labeled by fluorescent protein. It can be used to trace Gad2-positive cells.

*Literature published using this strain should indicate: Gad2-IRES-Cre mice (Cat. NO. NM-KI-200078) were purchased from Shanghai Model Organisms Center, Inc..

Validation Data

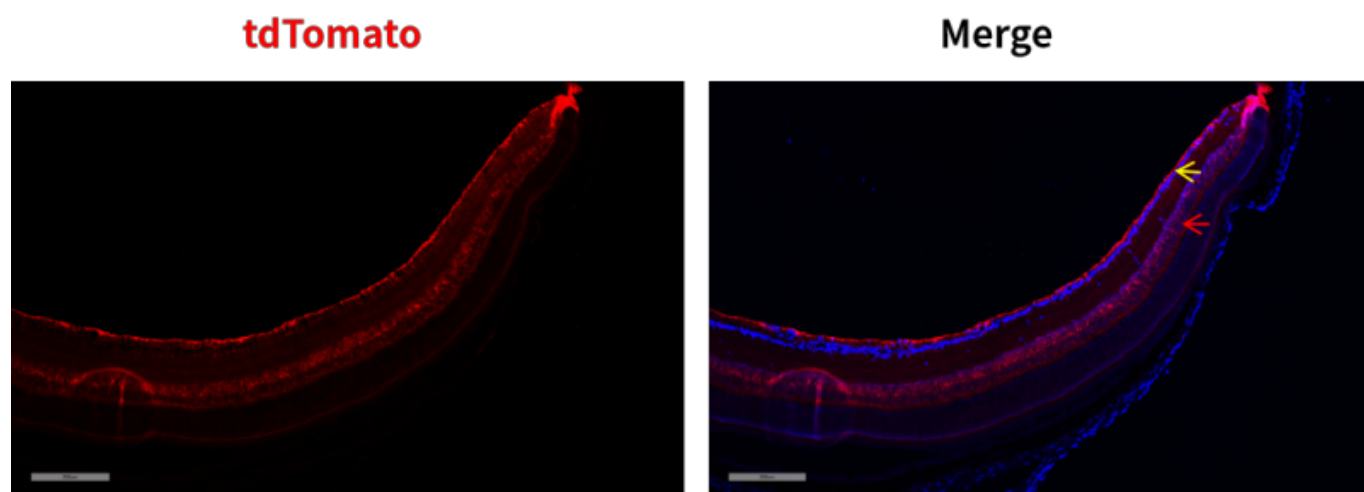


Fig. 1 Detection of tdTomato (red) in the retina of $Gad2^{iCre/+}; Rosa26^{tdTomato/+}$ mice. Cre-mediated recombination in the retinal ganglion cell layer (yellow arrow) and inner nuclear layer (red arrow) of $Gad2^{iCre/+}; Rosa26^{tdTomato/+}$ mouse.

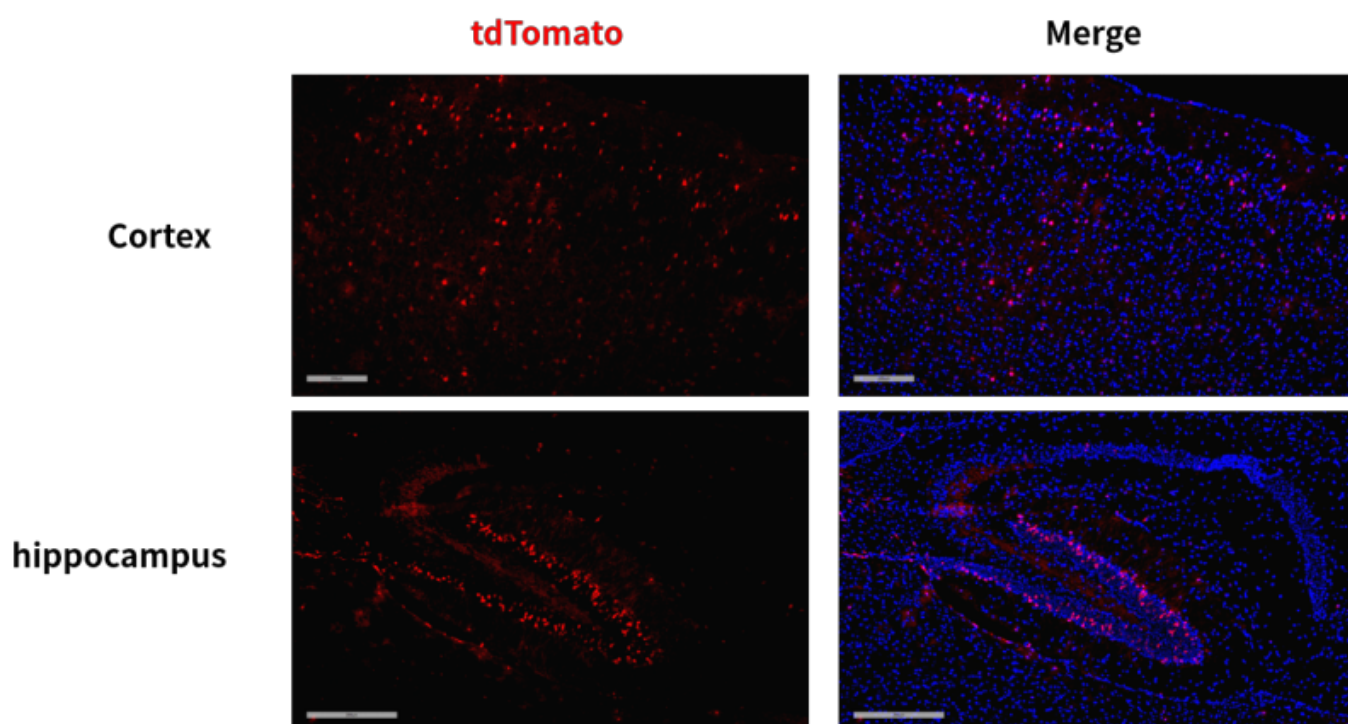


Fig. 2 Detection of tdTomato (red) in some cells of the cortex and hippocampus driven from $Gad2^{iCre/+}; Rosa26^{tdTomato/+}$ mice.

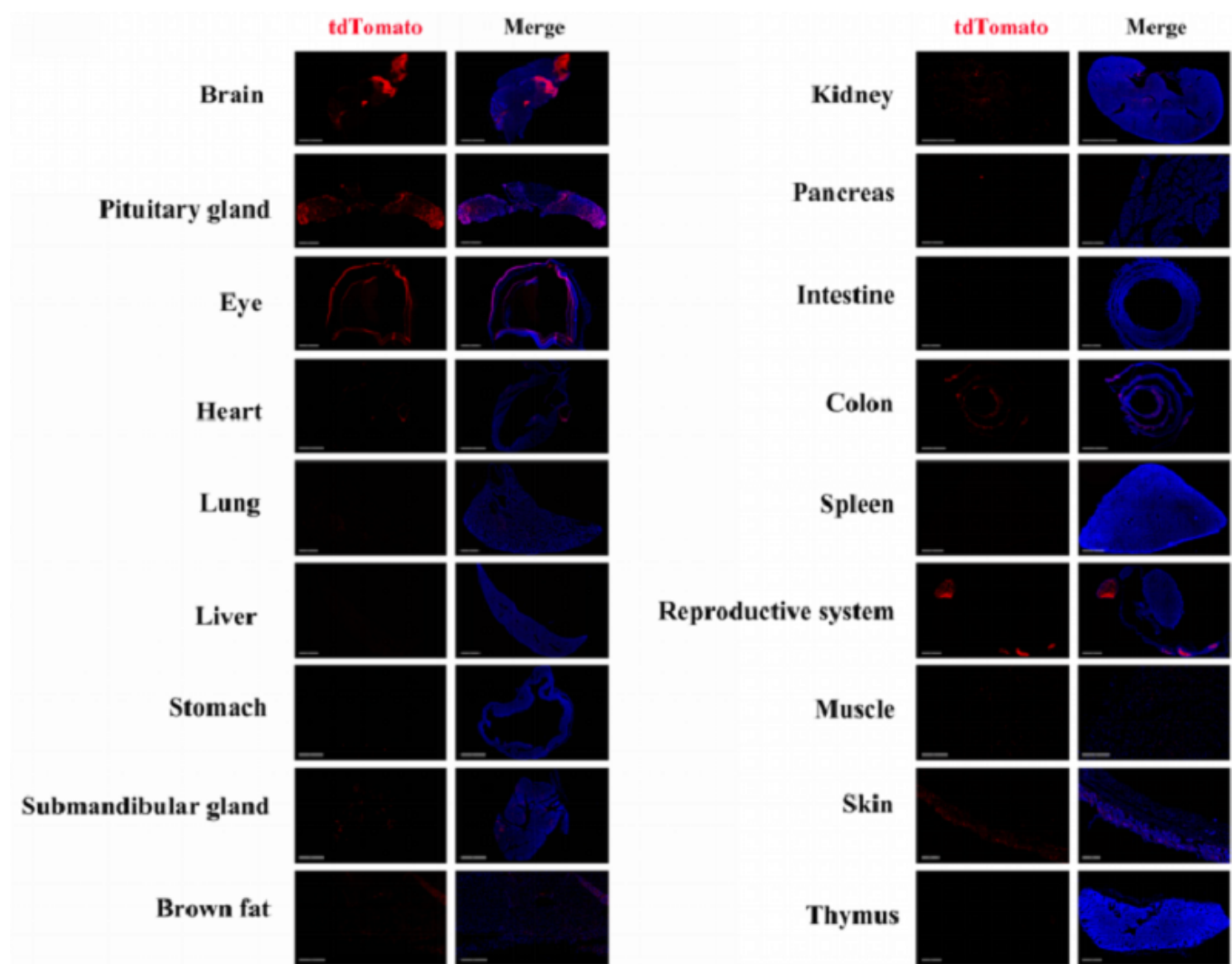


Fig. 3 Detection of tdTomato (red) in various tissues of $Gad2^{icre/+}; Rosa26^{tdTomato/+}$ mice. Cre-mediated recombination in some cells of the brain, pituitary gland, retina, lung, heart, liver, submandibular gland, brown fat, kidney, pancreas, intestine, colon, epididymis, muscle, skin and thymus can be observed. Tdtomato can not be detected in the spleen and testis. (For more detailed information please contact our technical advisor.)