

Sox2-CreERT2

Nomenclature	C57BL/6Smoc- <i>Sox2</i> ^{em1(CreERT2-polyA)Smoc}
Cat. NO.	NM-KI-200084
Strain State	Repository Live

Gene Summary

Gene Symbol Sox2	Synonyms	lcc; ysb; Sox-2
	NCBI ID	20674
	MGI ID	98364
	Ensembl ID	ENSMUSG00000074637
	Human Ortholog	SOX2

Model Description

The coding region of Sox2 gene was replaced by a CreERT2-polyA expression cassette.

Research Application: Cre recombinase tool, blastocysts, neural progenitor cells and in many adult epithelial tissues

*Literature published using this strain should indicate: Sox2-CreERT2 mice (Cat. NO. NM-KI-200084) were purchased from Shanghai Model Organisms Center, Inc..

Validation Data

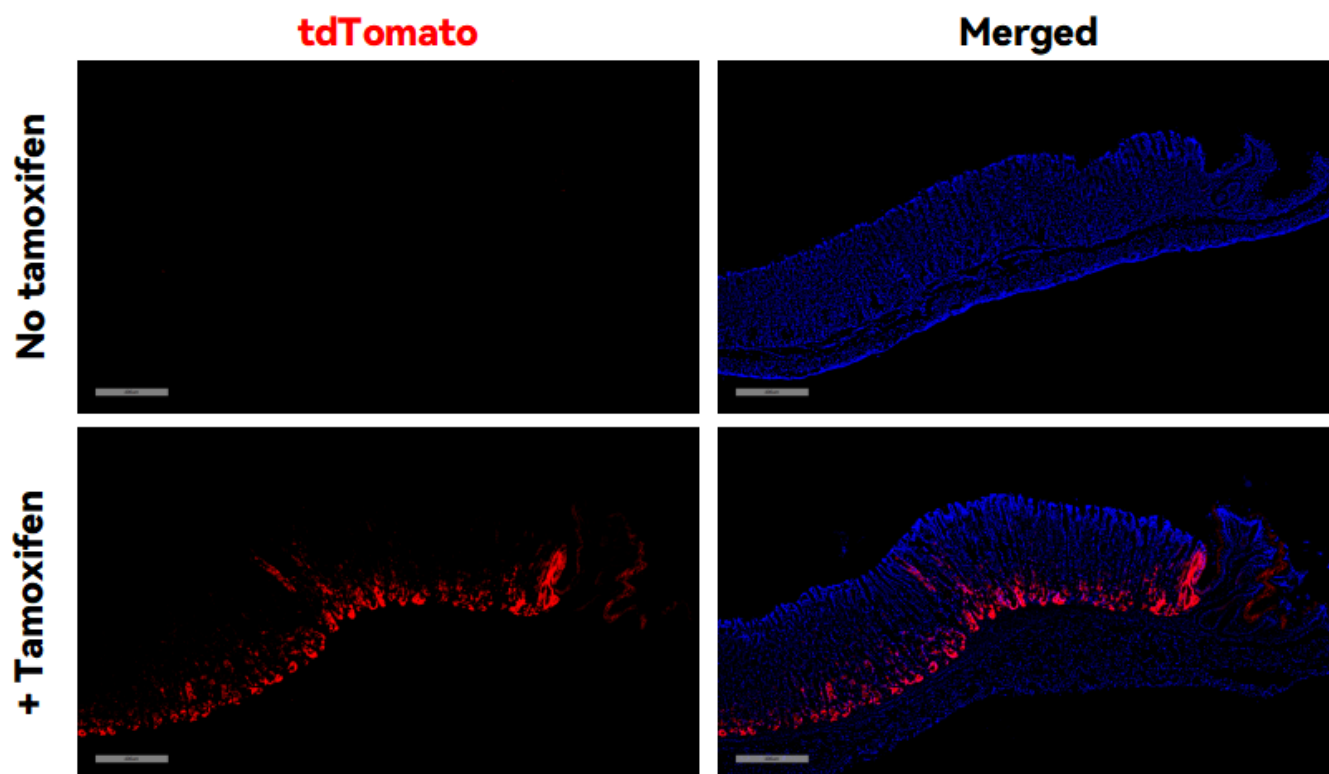


Fig1. CreERT2-mediated recombination in Stomach of Sox2CreERT2/+;Rosa26 tdTomato/+ mouse.

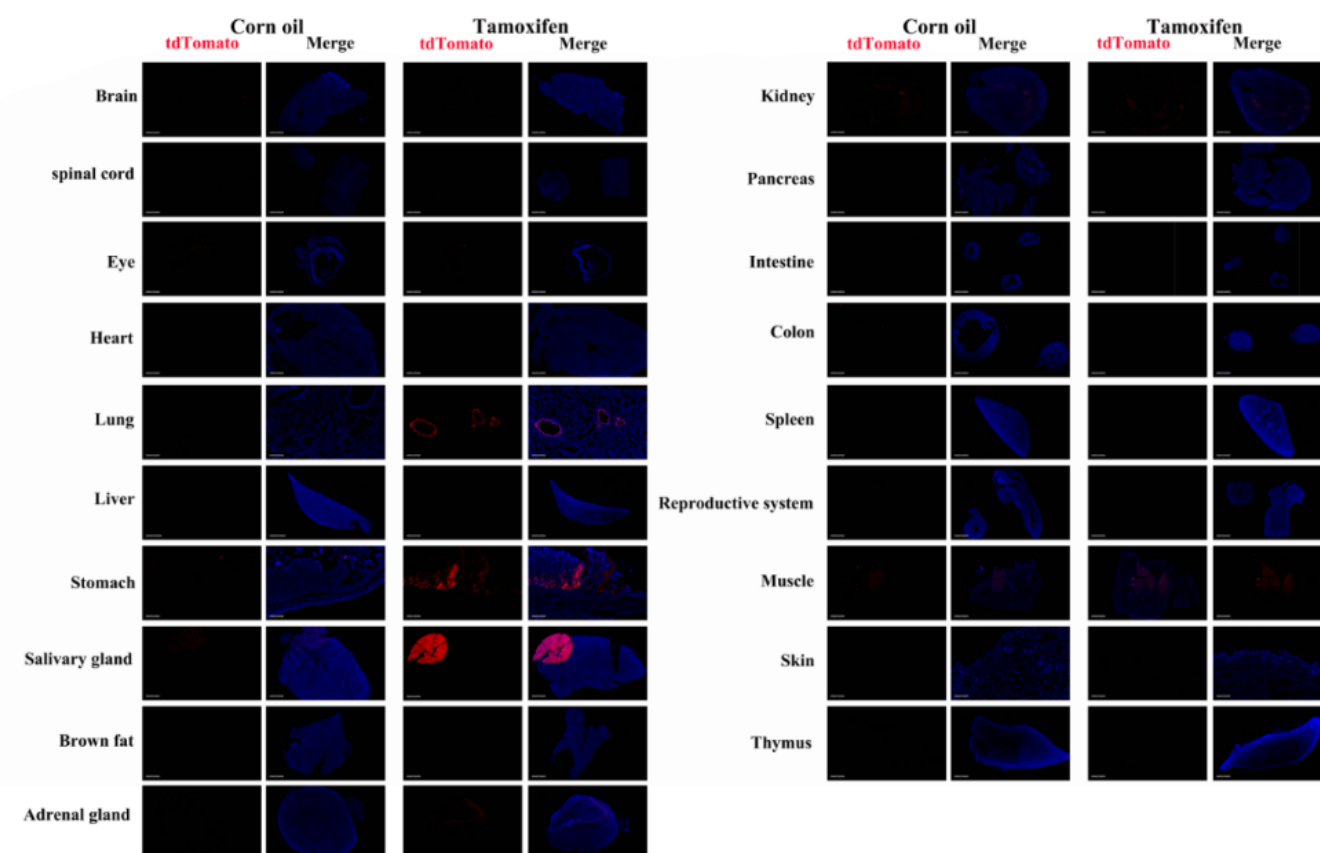


Fig2. Detection of tdTomato(red) in various tissues of Sox2CreERT2/+;Rosa26 tdTomato/+ mice. (For

more detailed information please contact our technical advisor.)
