

# Wt1-GFPCre

<b>Nomenclature</b>	C57BL/6Smoc- <i>Wt1</i> <sup>em1(GFPCre-WPRE-pA)Smoc</sup>
<b>Cat. NO.</b>	NM-KI-200128
<b>Strain State</b>	Repository Live

## Gene Summary

<b>Gene Symbol</b> <b>Wt1</b>	<b>Synonyms</b>	Wt-1; D630046I19Rik
	<b>NCBI ID</b>	<a href="#">22431</a>
	<b>MGI ID</b>	<a href="#">98968</a>
	<b>Ensembl ID</b>	<a href="#">ENSMUSG00000016458</a>
	<b>Human Ortholog</b>	WT1

## Model Description

A GFPCre-WPRE-pA expression cassette was knocked into the Wt1 gene start codon site.

**Research Application:** Cre recombinase tool

\*Literature published using this strain should indicate: Wt1-GFPCre mice (Cat. NO. NM-KI-200128) were purchased from Shanghai Model Organisms Center, Inc..

## Validation Data

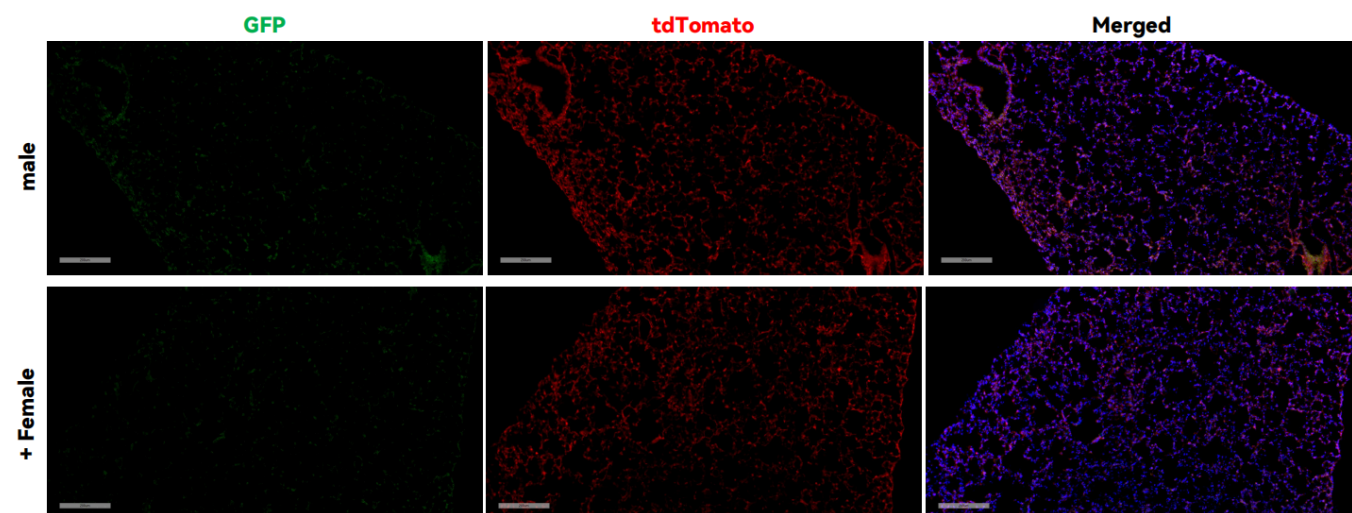


Fig1. Cre-mediated recombination in lung of Wt1<sup>Cre/+</sup>; Rosa26<sup>tdTomato/+</sup> mouse.

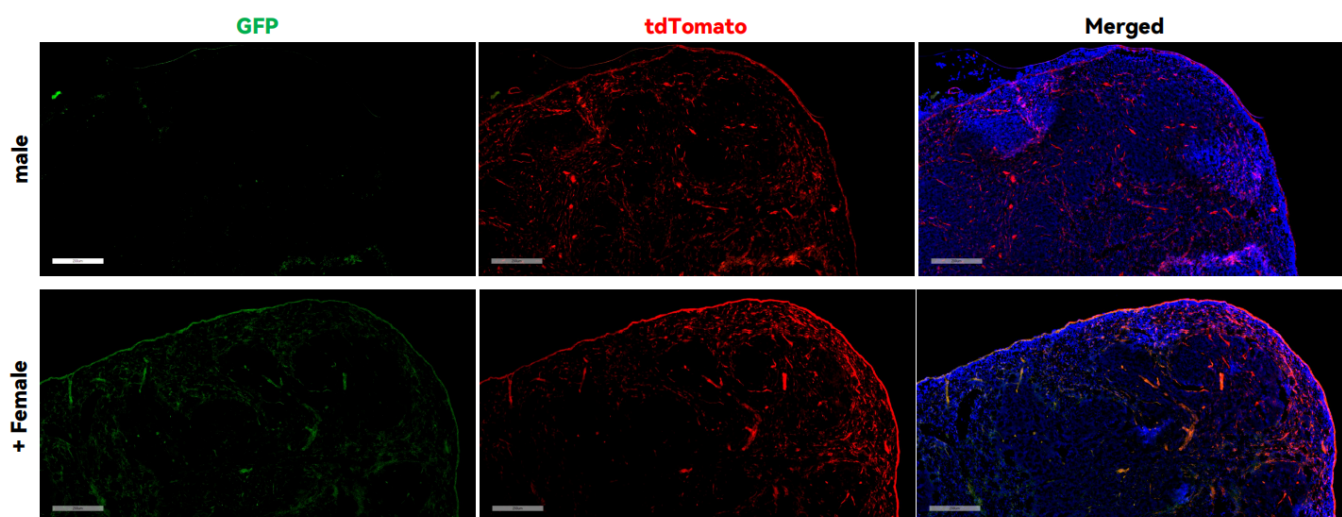


Fig2. Cre-mediated recombination in Spleen of Wt1cre/+; Rosa26tdTomato/+ mouse.

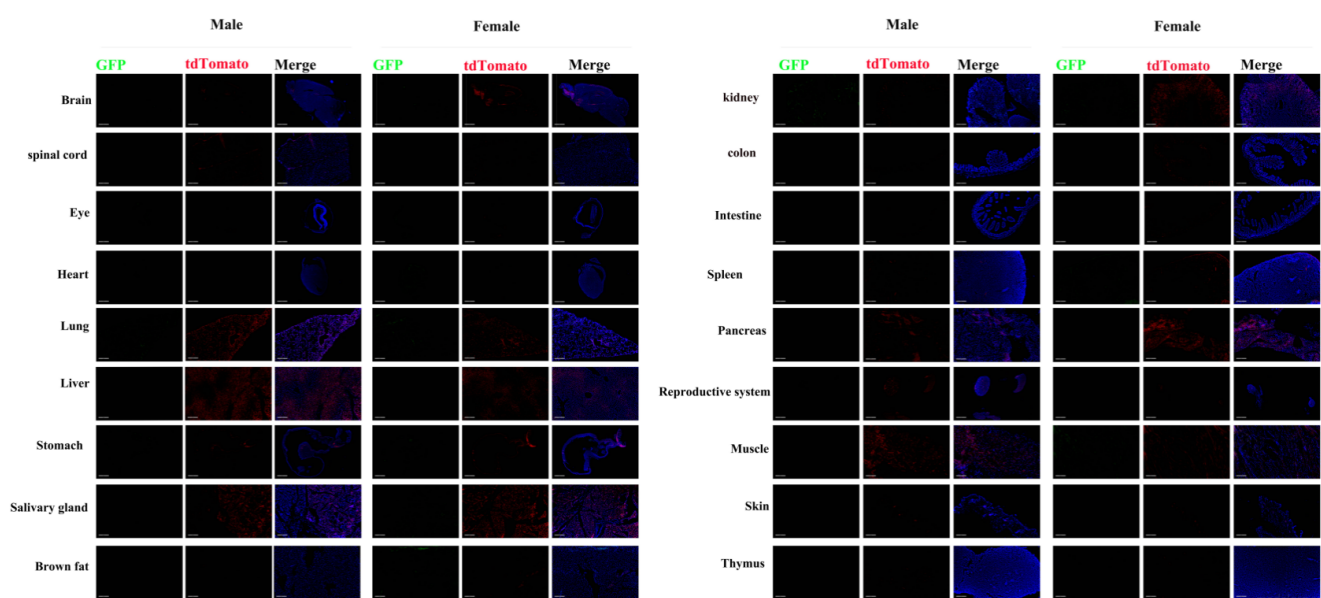


Fig3. Detection of tdTomato (red) in various tissues of Wt1cre/+; Rosa26tdTomato/+ mice. (For more detailed information please contact our technical advisor.)