

Krt5-IRES-CreERT2

Nomenclature	C57BL/6Smoc- <i>Krt5</i> ^{em1(IRES-CreERT2)Smoc}
Cat. NO.	NM-KI-200168
Strain State	Repository Live

Gene Summary

Gene Symbol Krt5	Synonyms	K5; CK5; Tfip8; Krt2-5; AW146334; 3300001P10Rik
	NCBI ID	110308
	MGI ID	96702
	Ensembl ID	ENSMUSG00000061527
	Human Ortholog	KRT5

Model Description

A IRES-CreERT2 expression cassette was knocked into the Krt5 gene stop codon site.

Research Application: Cre recombinase tool

*Literature published using this strain should indicate: Krt5-IRES-CreERT2 mice (Cat. NO. NM-KI-200168) were purchased from Shanghai Model Organisms Center, Inc..

Validation Data

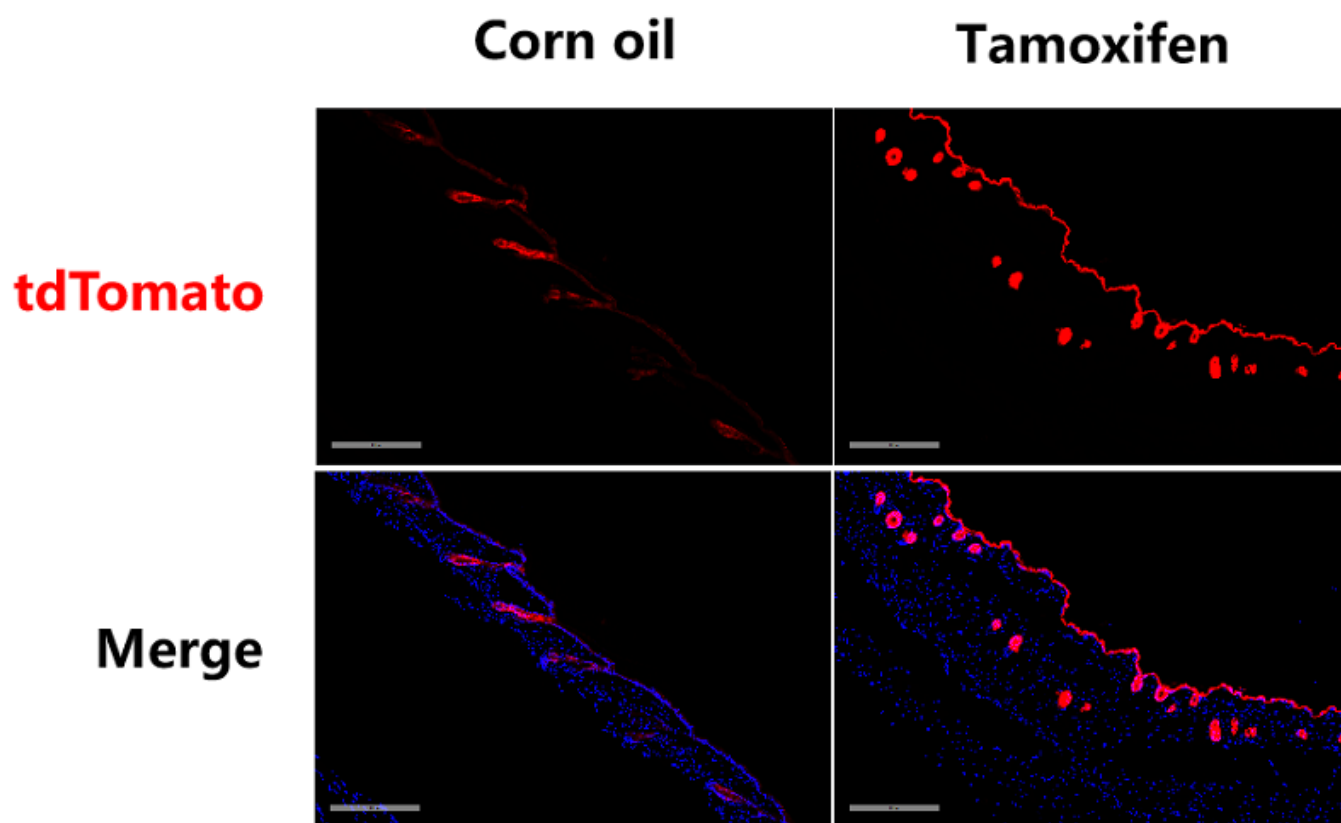


Fig. 1 Detection of tdTomato (red) in the epidermis and hair follicle of *Krt5CreERT2/+; Rosa26tdTomato/+* mouse. CreERT2-mediated recombination in the epidermis and hair follicle of *Krt5CreERT2/+; Rosa26tdTomato/+* mouse. Some leakiness were detected in the epidermis and hair follicle prior to tamoxifen exposure.

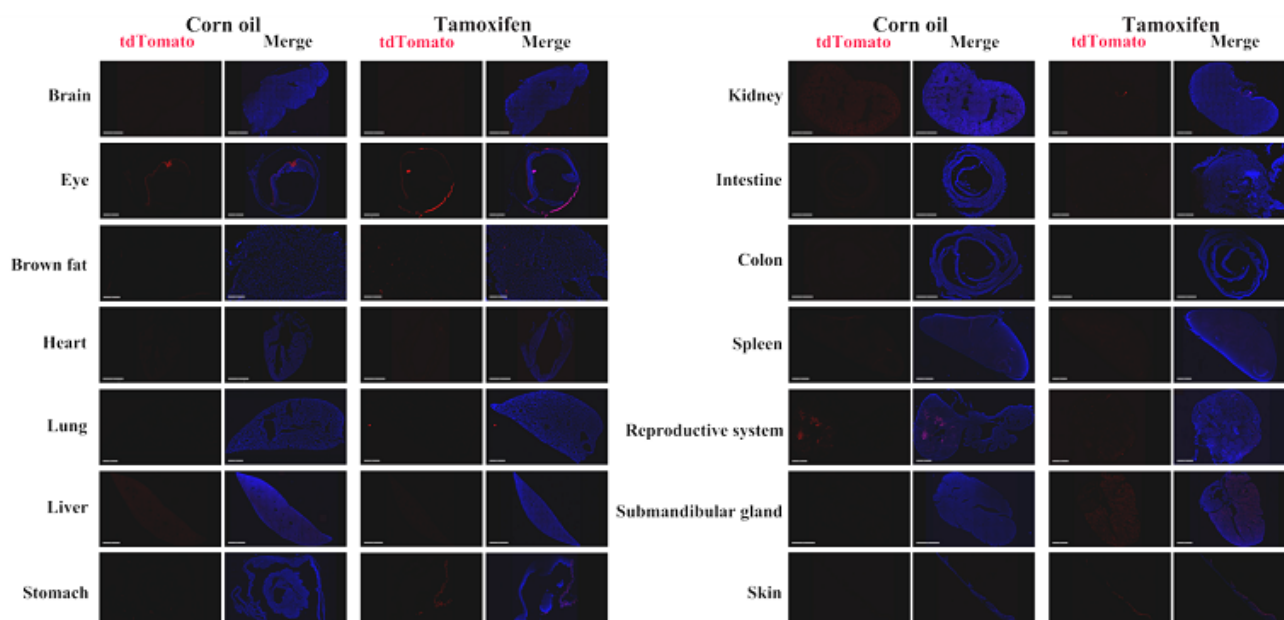


Fig. 2 Detection of tdTomato (red) in various tissues of *Krt5CreERT2/+; Rosa26tdTomato/+* mice.

CreERT2-mediated recombination in the brown fat and submandibular gland can be induced by tamoxifen. Some leakiness were detected in the skin, eyes and testis prior to tamoxifen exposure.

