

# Tmem119-2A-tdTomato

<b>Nomenclature</b>	C57BL/6Smoc- <i>Tmem119</i> <sup>em3(P2A-tdTomato)Smoc</sup>
<b>Cat. NO.</b>	NM-KI-200236
<b>Strain State</b>	Developing

## Gene Summary

<b>Gene Symbol</b> <b>Tmem119</b>	<b>Synonyms</b>	obif; AW208946; BC025600
	<b>NCBI ID</b>	<a href="#">231633</a>
	<b>MGI ID</b>	<a href="#">2385228</a>
	<b>Ensembl ID</b>	<a href="#">ENSMUSG00000054675</a>
	<b>Human Ortholog</b>	TMEM119

## Model Description

A P2A-tdTomato expression cassette was knocked into the Tmem119 gene stop codon site.

**Research Application:** Fluorescence Tracer Mice

\*Literature published using this strain should indicate: Tmem119-2A-tdTomato mice (Cat. NO. NM-KI-200236) were purchased from Shanghai Model Organisms Center, Inc..

## Validation Data

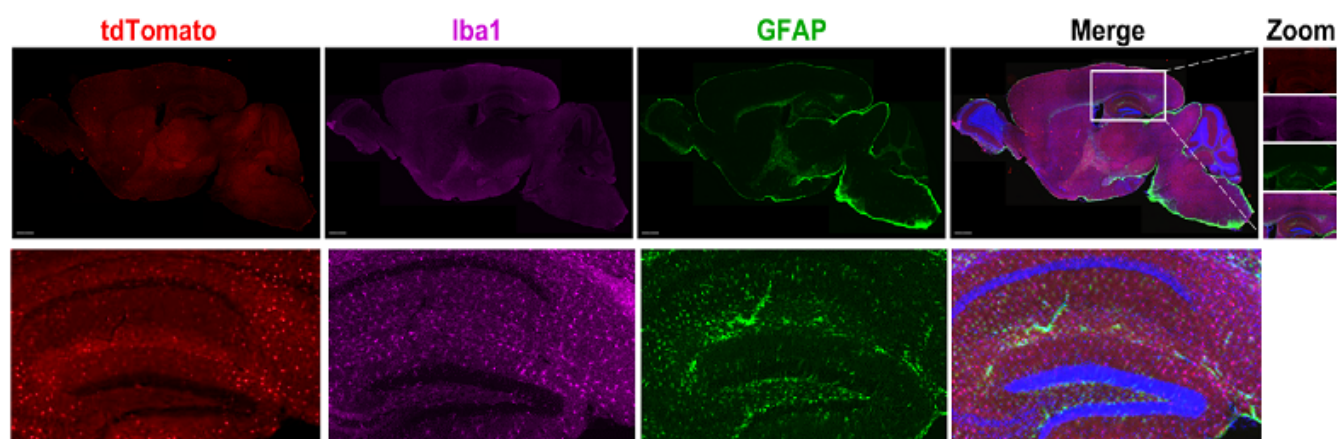


Fig.1 Detection of tdTomato (red) in the brain of Tmem119tdTomato/+ mice.

TdTomato+ cells (red) were colocalized with microglia/macrophage marker Iba1+ cells (purple),

but not astrocyte marker GFAP+ (green) cells in the brain of Tmem119tdTomato/+ mice by immunofluorescence staining.

---