

Il7r-Cre

Nomenclature	C57BL/6Smoc- <i>Il7r</i> ^{em1(Cre-Wpre-pA)Smoc}
Cat. NO.	NM-KI-200306
Strain State	Repository Live

Gene Summary

Gene Symbol Il7r	Synonyms	CD127, IL-7Ralpha
	NCBI ID	16197
	MGI ID	96562
	Ensembl ID	ENSMUSG000000003882
	Human Ortholog	IL7R

Model Description

Cre-Wpre-pA expression cassette was knocked into the Il7r gene start codon site.

*Literature published using this strain should indicate: Il7r-Cre mice (Cat. NO. NM-KI-200306) were purchased from Shanghai Model Organisms Center, Inc..

Validation Data

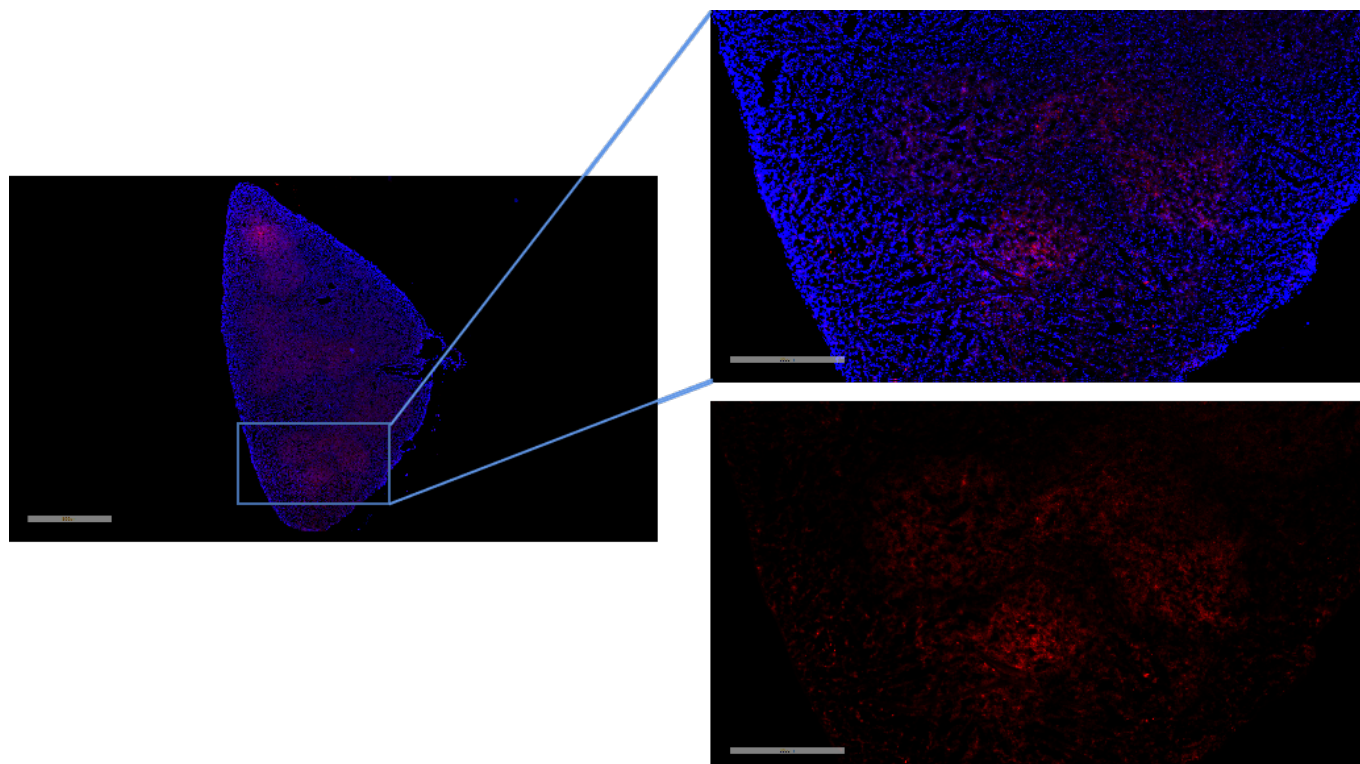


Fig. 1 Cre-mediated recombination in spleen of $Il7r^{Cre/+}$; $Rosa26^{tdTomato/+}$ mouse.

Detection of tdTomato (red) in the red and white pulp of spleen derived from $Il7r^{Cre/+}$; $Rosa26^{tdTomato/+}$ mouse.

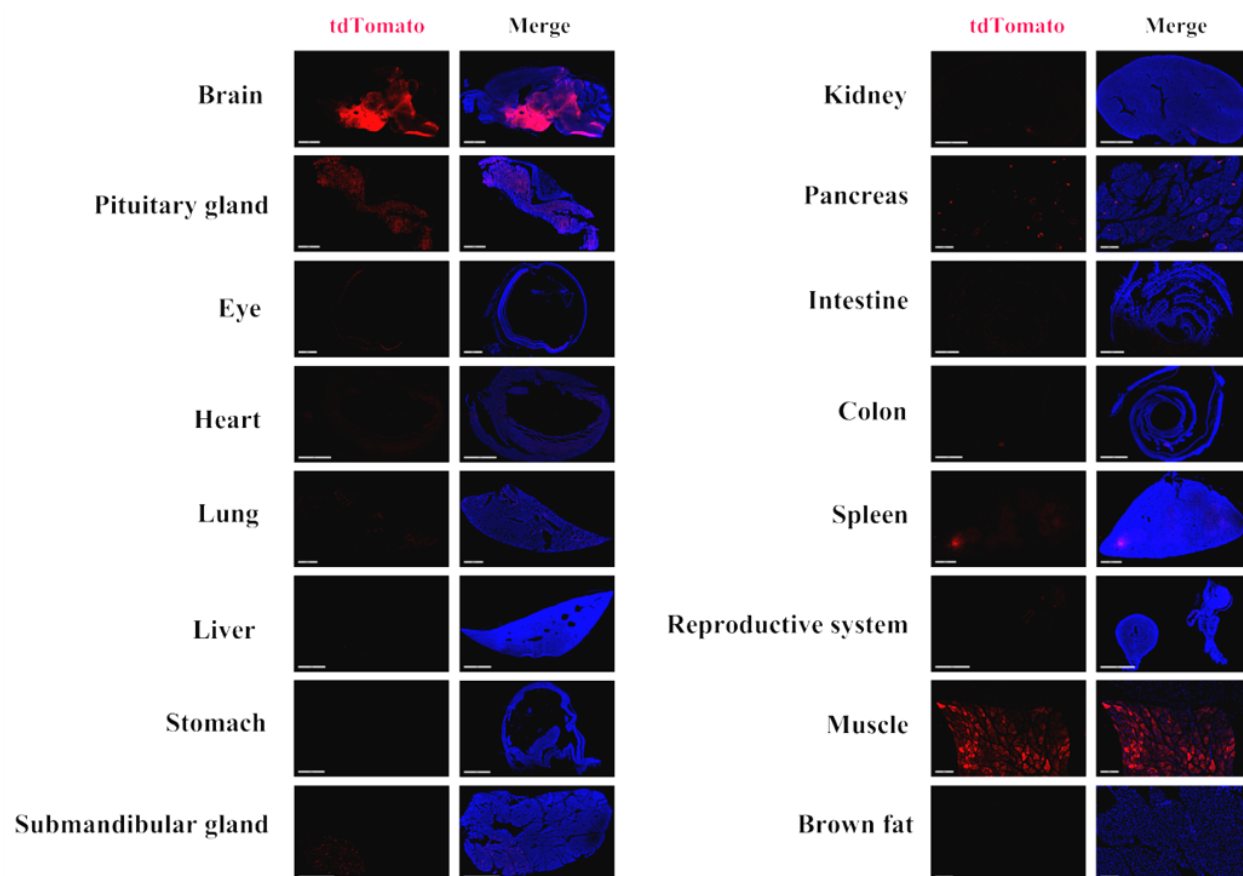


Fig. 2: Detection of tdTomato (red) in various tissues of *Il7rcre/+; Rosa26tdTomato/+* mice. Cre-mediated recombination can be detected in some cells of spleen, brain, pituitary gland, submandibular gland, retina, lung and pancreas. Besides, tdTomato expression can also be observed in myocardial cells and skeletal muscle cells.(For more detailed information please contact our technical advisor.)