

Qrfp-Cre

| | |
|---------------------|---|
| Nomenclature | C57BL/6Smoc- <i>Qrfp</i> ^{em(iCre-pA)Smoc} |
| Cat. NO. | NM-KI-204994 |
| Strain State | Sperm cryopreservation |

Gene Summary

| | | |
|-----------------------------------|-----------------------|-------------------------------------|
| Gene Symbol Qrfp | Synonyms | P518 |
| | NCBI ID | 227717 |
| | MGI ID | 3630329 |
| | Ensembl ID | ENSMUSG000000043102 |
| | Human Ortholog | QRFP |

Model Description

iCre-pA expression cassette was knocked into the *Qrfp* gene .

*Literature published using this strain should indicate: *Qrfp*-Cre mice (Cat. NO. NM-KI-204994) were purchased from Shanghai Model Organisms Center, Inc..

Validation Data

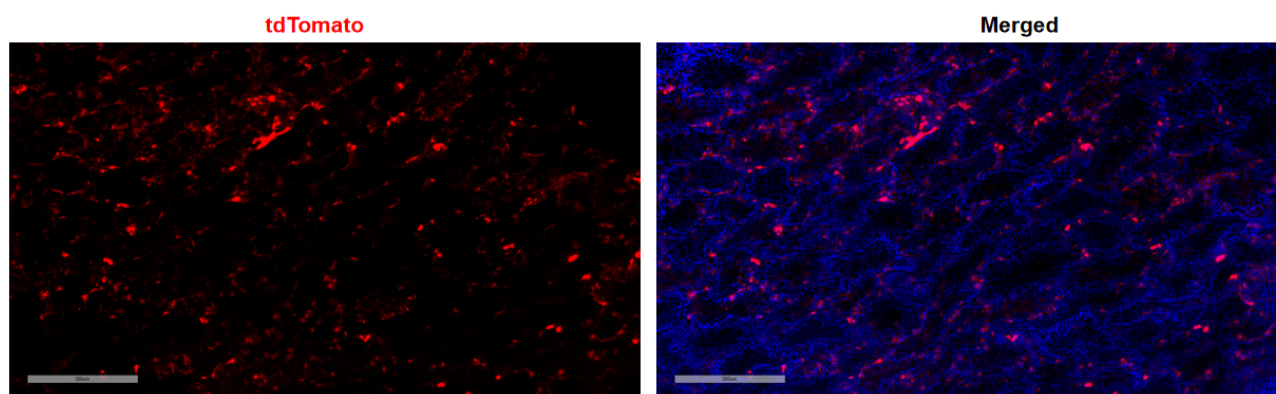


Fig 1. Cre-mediated recombination in testis of *Qrfp*^{Cre/+}; *Rosa26*^{tdTomato/+} mice.

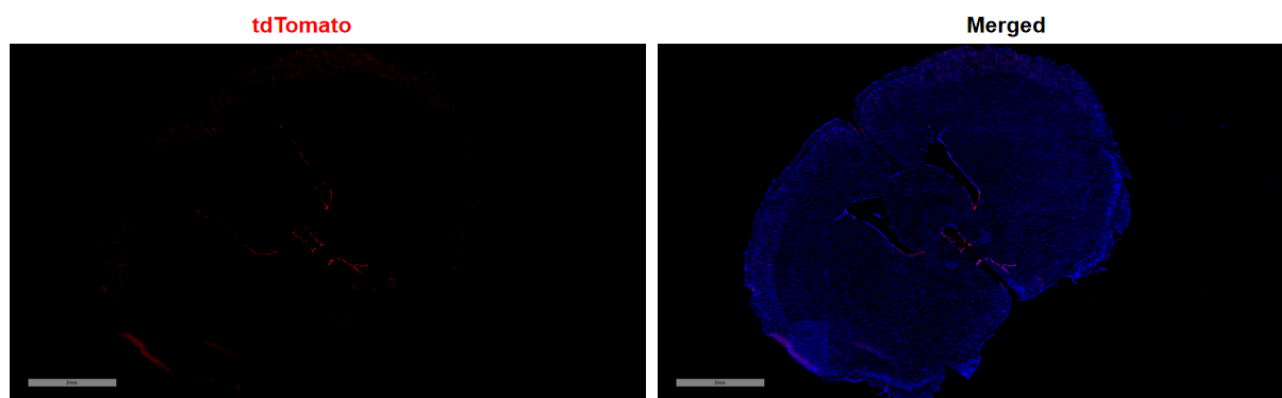


Fig 2. Cre-mediated recombination in brain of *QrfpCre/+; Rosa26tdTomato/+* mice.

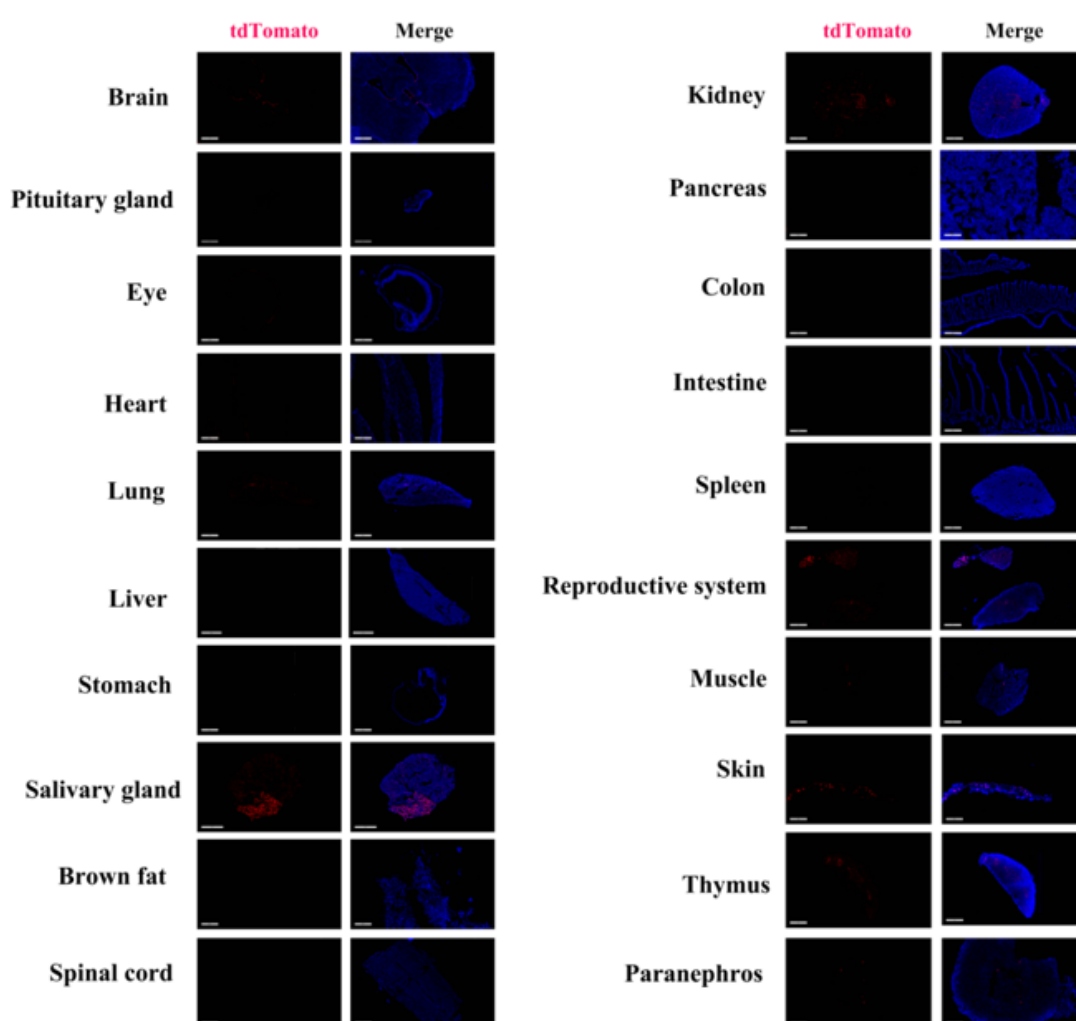


Fig 3. Detection of tdTomato (red) in various tissues of *QrfpCre/+; Rosa26tdTomato/+* mice. Expression tissues include: brain, lung, salivary glands, kidney, testis and epididymis, skin, thymus. A few cells expressed in adrenal gland. Tissues that unexpressed include pituitary gland, retina, heart, liver, stomach, brown fat, spinal cord, pancreas, large and small intestine, spleen, muscle. (3-week old, male) (For more detailed information please contact our technical advisor.)

