

MC38-hHER2

Strain Information

Cat. NO.	NM-S13-TM13
Cell Line	MC38- <i>Ig52^{em1}</i> (hHER2) <i>Smoc</i>
Strain State	Validation of tumorigenic capacity completed
Model Description	These cells harbor a hHER2 cassette in the Rosa26 locus generated by homologous recombination.
*Literature published using this strain should indicate: MC38-hHER2 cell line (Cat. NO. NM-S13-TM13) was purchased from Shanghai Model Organisms Center, Inc..	

Validation Data

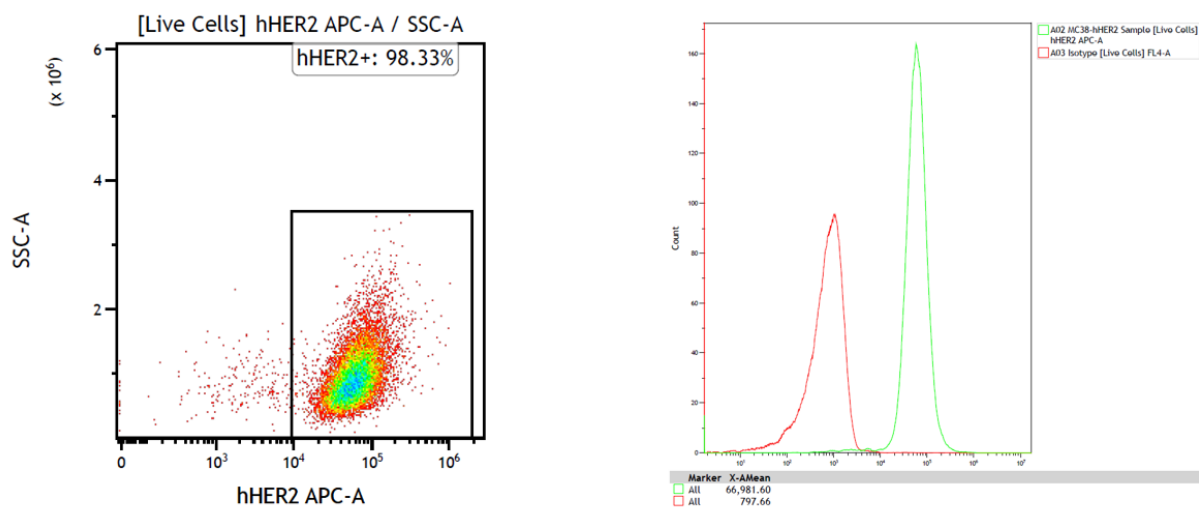


Fig1. Human HER2 expression in MC38-hHER2 HuCell.

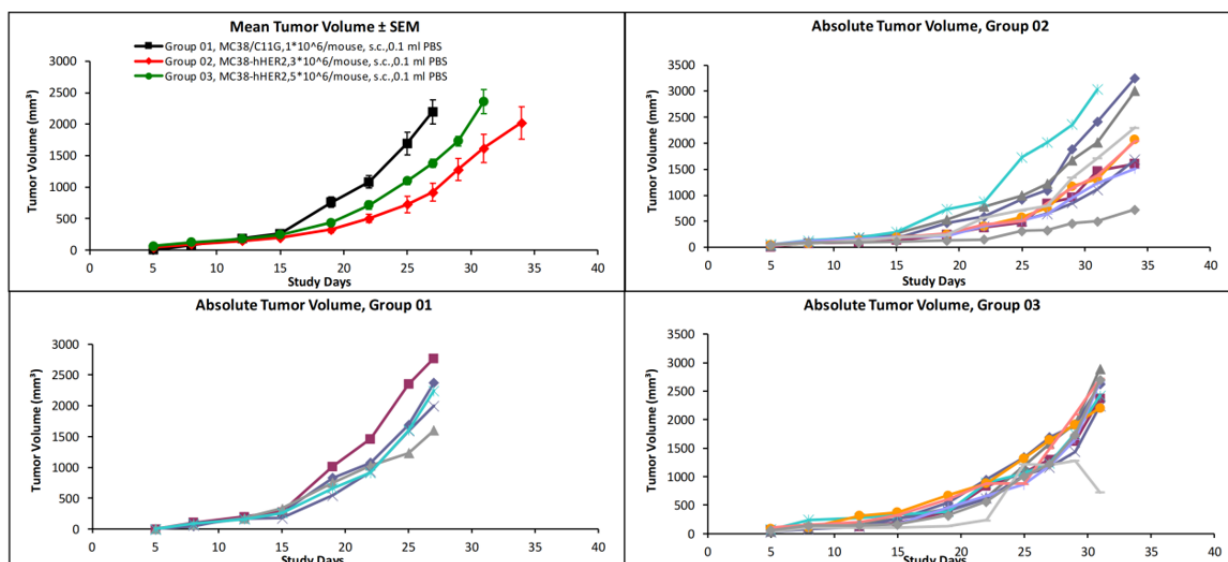


Fig2. Human HER2 expression in female C57BL/6 mice bearing MC38-hHER2 HuCell.

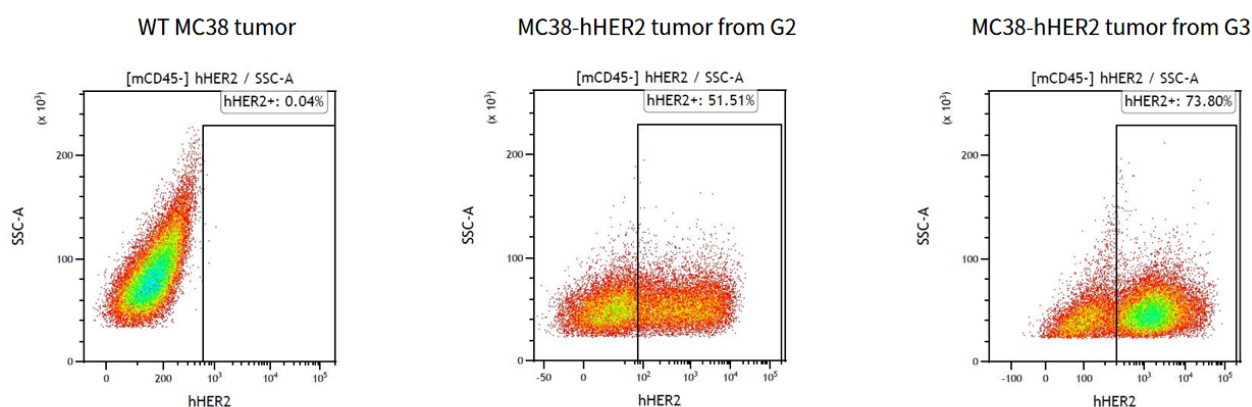


Fig3. Human HER2 expression in MC38-hHER2 tumor from female C57BL/6 mice.

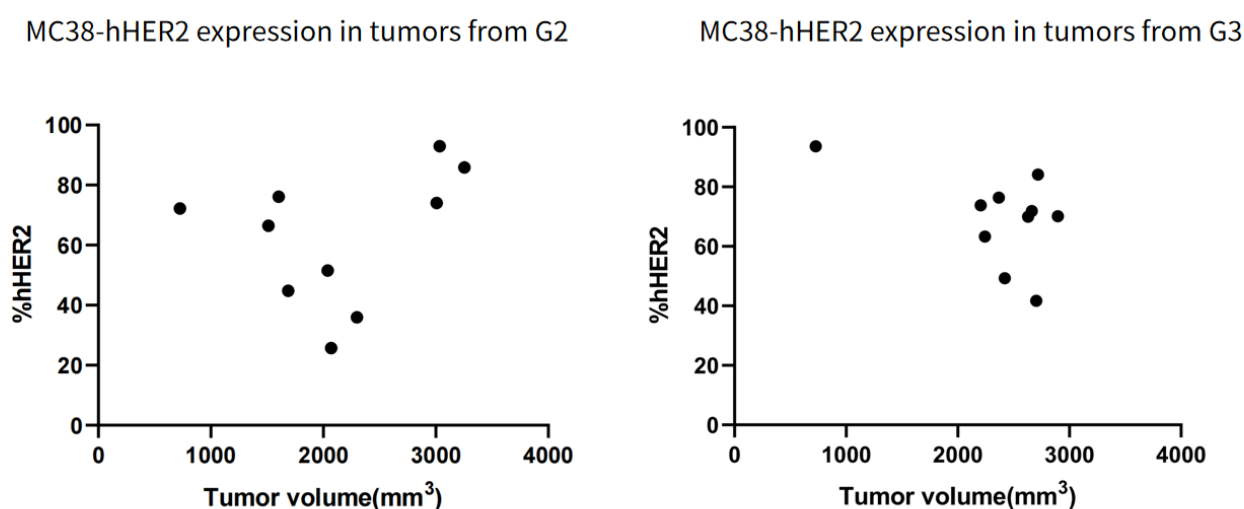


Fig4. Human HER2 expression in MC38-hHER2 tumor from female C57BL/6 mice.

5×10^6 cells/mice inoculation dose level was recommended in C57BL/6 mice.
