

hHLA-DPA1*03: 01

Nomenclature	C57BL/6Smoc- <i>H2-Aa</i> ^{em1} (hHLA-DPA1*03: 01) /Smoc
Cat. NO.	NM-HU-210009
Strain State	Repository Live

Gene Summary

Gene Symbol H2-Aa	Synonyms	Ia1; H2Aa; Ia-1; H-2Aa; Aalpha; IAalpha; I-Aalpha
	NCBI ID	14960
	MGI ID	95895
	Ensembl ID	ENSMUSG00000036594
	Human Ortholog	HLA-DQA1

Model Description

The endogenous mice H2-Aa gene was replaced by human HLA-DPA1*03: 01 gene

Research Application: inmmeue therapy; drug screening

*Literature published using this strain should indicate: hHLA-DPA1*03: 01 mice (Cat. NO. NM-HU-210009) were purchased from Shanghai Model Organisms Center, Inc..

Validation Data

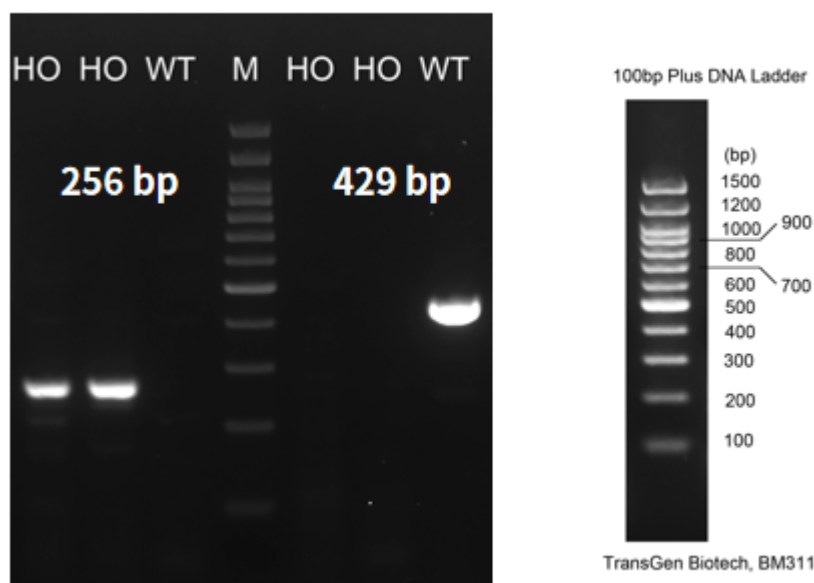


Fig.1 Detection of HLA-DPA1 expression in large Intestine by RT-PCR. Wild type: one band at 429 bp with primers F1/R1 (mHla-dpa1); Homozygous: one band at 256 bp with primers F2/R2 (hHLA-DPA1). Abbr. M, DNA marker; HO, homozygous; WT, wild type.

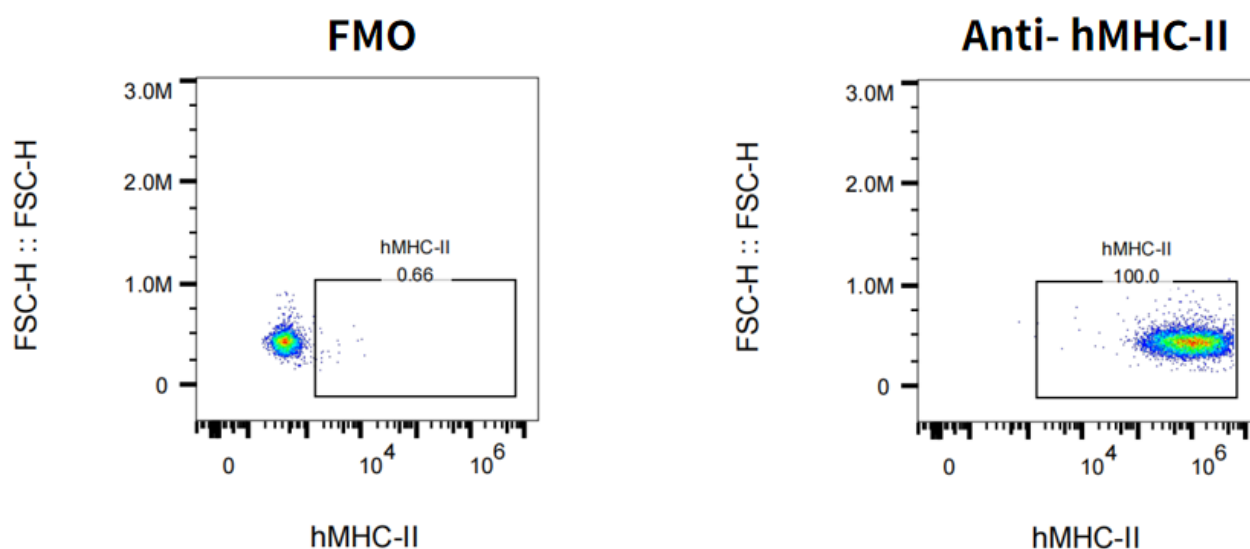


Fig2. Expression characterization of hHLA-DP on human PBMC.

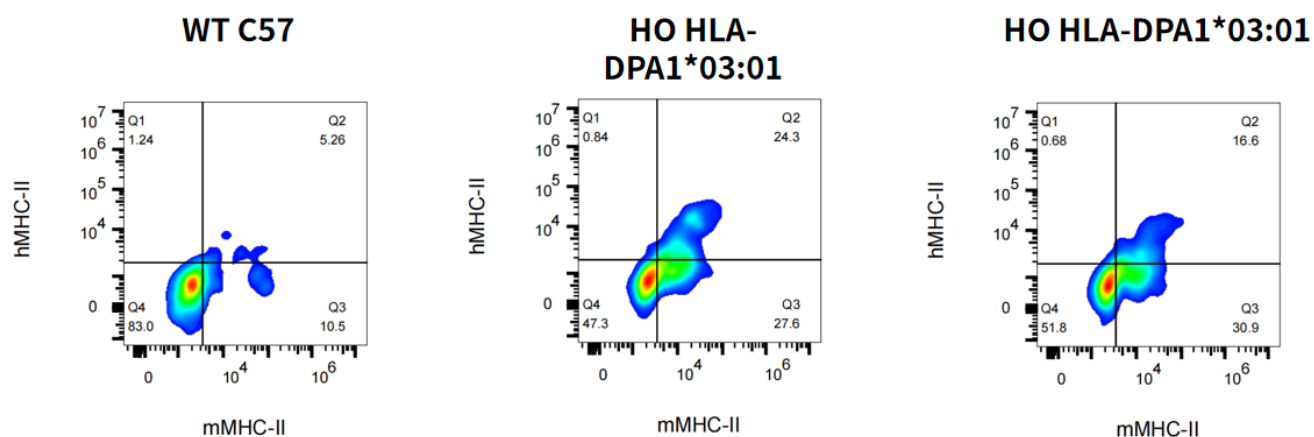


Fig3. Expression characterization of HLA-DPA1*03:01 on DCs in Blood in HLA-DPA1*03:01 KI mice. Note: The anti-hMHC II antibody has been reported to react with a shared epitope of HLA-DR, HLA-DP, and HLA-DQ. The anti-mMHC II antibody reacts with a polymorphic determinant shared by the I-A^b, I-A^d, I-A^q, I-E^d, and I-E^k MHC class II alloantigens from mice carrying H-2^{p,r,q,b,d,u} haplotypes.