

B2m-KO(NMG)

Nomenclature	NOD.Cg- <i>Prkdc</i> ^{scid} <i>Il2rg</i> ^{em1Smoc} <i>B2m</i> ^{em1Smoc}
Cat. NO.	NM-NSG-002
Strain State	Repository Live

Gene Summary

Gene Symbol B2m	Synonyms	beta2-m beta 2 microglobulin Ly-m11
	NCBI ID	12010
	MGI ID	88127
	Ensembl ID	ENSMUSG00000060802
	Human Ortholog	B2M

Model Description

This B2m knockout mouse model was obtained by knocking out the exon 2-3 region of mouse B2m gene on the background of NMG mouse.

Research Application: immunodeficiency, immune system, transplantation research

*Literature published using this strain should indicate: B2m-KO(NMG) mice (Cat. NO. NM-NSG-002) were purchased from Shanghai Model Organisms Center, Inc..

Validation Data

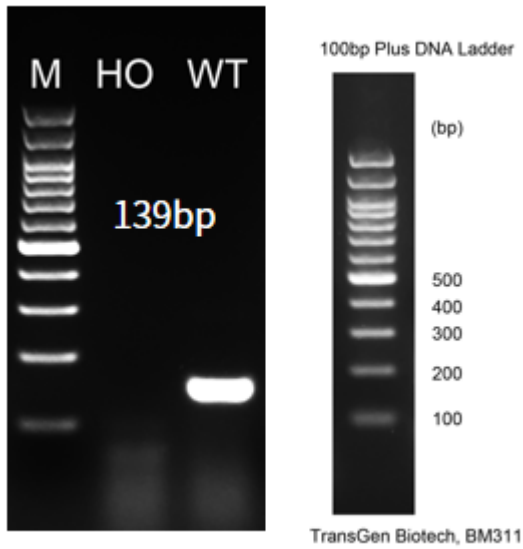


Fig1. Detection of B2m expression in cerebellum by RT-PCR.

Wild type: only one band at 139 bp with primers F1/R1(mB2m);

Abbr. M, DNA marker; HO, homozygous; WT, wild type.

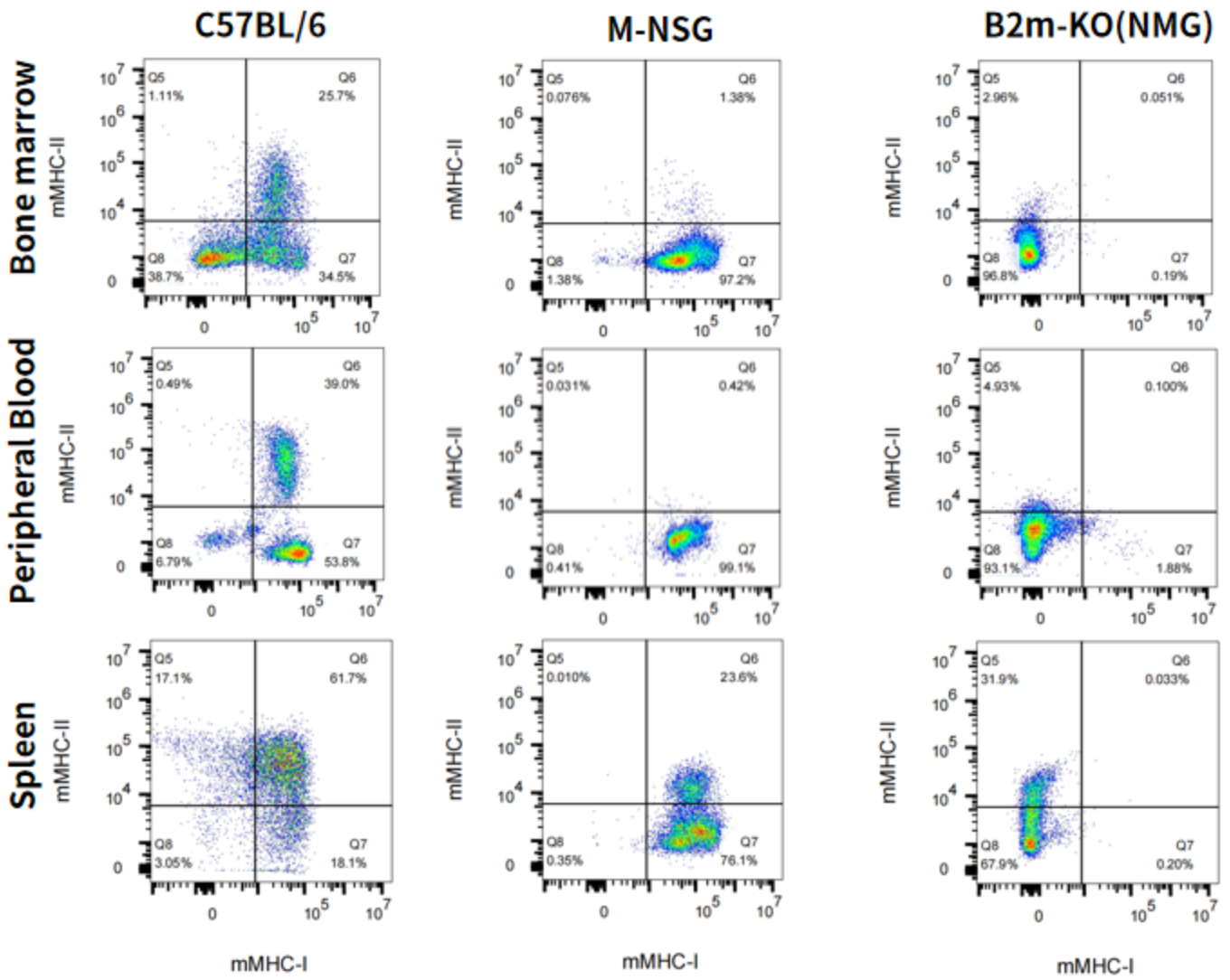


Fig2. Expression characterization of mouse MHC I and MHC II in bone marrow, blood, spleen in B2m-KO(M-NSG) mice.